



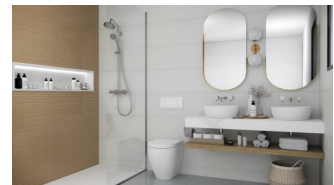
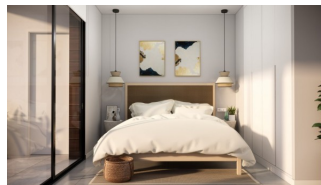
REF: # 9898

PILAR DE LA HORADADA (LO ROMERO GOLF)



#### INFO

PRIX:	399.000 €
TYPE:	Villa
CITY:	Pilar De La Horadada (Lo Romero Golf)
CHAMBRES:	3
Ba ENFANTS:	3
Built ( m2 ):	103
pas ( m2 ):	172
Terrasse ( m2 ):	73
A ENFANTS:	-
de plante:	-
MESSAGE	-



#### DESCRIPTION

EXCLUSIVE "KEY READY" VILLA IN PILAR DE LA HORADADA on Lo Romero Golf Course. This new 103m2 south-east facing villa consists of 3 bedrooms (with fitted wardrobes), 3 bathrooms, a 27m2 terrace, a 46m2 solarium and a 172m2 private garden. The villa has private parking, a lovely communal pool, barbecue and lounge areas, perfect for relaxing. Located on Lo Romero Golf course, the villa is only a 100 m from the course, 5 min from entertainment venues and just 6km away from the beach. Lo Romero Golf is the perfect course for golfers who are passionate about golf and is suitable for all levels of ability. Pilar de la Horadada is a typical Spanish village in the most southern part of the Costa Blanca. The large main street has supermarkets, lots of shops, restaurants and bars and some lovely squares. In addition to the excellent course of Lo Romero Golf there are the originally established Golf courses on the Orihuela Costa Villamartin, Las Ramblas, Real Campoamor and Las Colinas approximately 14km away. The beautiful beaches of Torre de la Horadada and Mil Palmeras with fine sand promenade is just 5 minutes away. Only 8.2km away between San Javier and San Pedro del Pinatar, is Dos Mares shopping centre, and the major

shopping centres of Murcia and Cartagena are also both under an hour's drive away. Further towards the Orihuela Costa, only a 15 minute journey you will find "La Zenia Boulevard" the largest shopping centre in the Alicante region. Nearest Airports: Murcia Corvera Airport 35 minutes (46km) and Alicante Airport 50 minutes (77km)



<b>STYLE</b>	<b>VIEW</b>	<b>CLIMATISATION</b>	<b>DISTANCE :</b>
<ul style="list-style-type: none"><li>moderne</li></ul>	<ul style="list-style-type: none"><li>Panoramico</li></ul>	<ul style="list-style-type: none"><li>Central</li></ul>	Beach : 9 Km aéroport: 40 Km
<b>POSITION</b>	<b>PARKING PAS. CAR</b>	<b>ÉTAGE</b>	<b>JARD RIVIÈRE ET TERRASSES N</b>
Est sud	: 1	<ul style="list-style-type: none"><li>tuiles</li><li>Stone</li></ul>	<ul style="list-style-type: none"><li>Terrasse ouverte</li><li>clôtures</li><li>barbecue / grill</li><li>Jard RIVER n privée</li></ul>
<b>EXTRA</b>			
<ul style="list-style-type: none"><li>intégré</li><li>Porte de sécurité</li><li>Double vitrage</li></ul>			

## PROPERTY GALLERY





















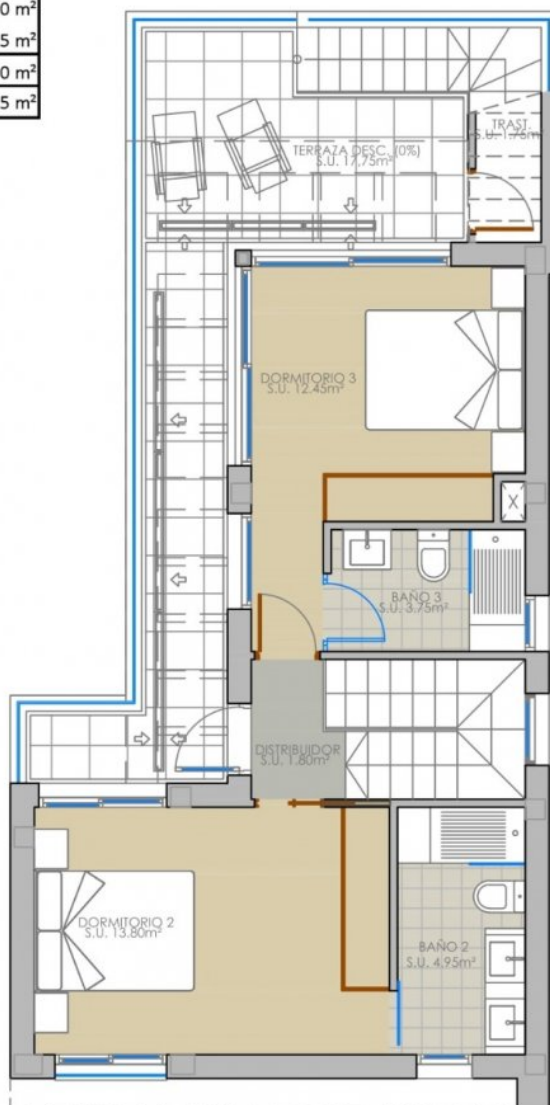


SUPERFICIES CONSTRUIDAS TOTALES	
Planta baja	
Vivienda cerrada	70,35 m <sup>2</sup>
Total Planta baja	70,35 m <sup>2</sup>
Planta primera	
Vivienda cerrada	48,10 m <sup>2</sup>
Terraza desc. (0%)	17,75 m <sup>2</sup>
Total Planta primera	48,10 m <sup>2</sup>
TOTAL	118,45 m <sup>2</sup>

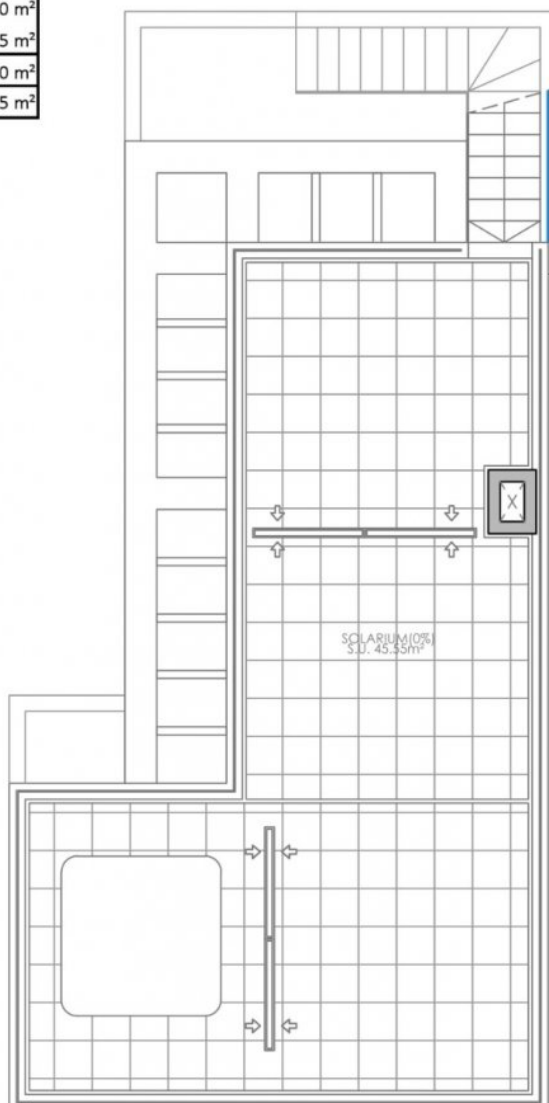




SUPERFICIES CONSTRUIDAS TOTALES	
Planta baja	
Vivienda cerrada	70,35 m <sup>2</sup>
Total Planta baja	70,35 m <sup>2</sup>
Planta primera	
Vivienda cerrada	48,10 m <sup>2</sup>
Terraza desc. (0%)	17,75 m <sup>2</sup>
Total Planta primera	48,10 m <sup>2</sup>
<b>TOTAL</b>	<b>118,45 m<sup>2</sup></b>



SUPERFICIES CONSTRUIDAS TOTALES	
Planta baja	
Vivienda cerrada	70,35 m <sup>2</sup>
Total Planta baja	70,35 m <sup>2</sup>
Planta primera	
Vivienda cerrada	48,10 m <sup>2</sup>
Terraza desc. (0%)	17,75 m <sup>2</sup>
Total Planta primera	48,10 m <sup>2</sup>
TOTAL	118,45 m <sup>2</sup>













***"OUR EXPERIENCE IS YOUR GUARANTEE"***