



REF: # 9896

QUESADA-ROJALES



INFO

PRIX: 925.000 €

TYPE: Villa

CITY: Quesada-Rojales

CHAMBRES: 2

Ba ENFANTS: 1

Built (m2): 76

pas (m2): 53

Terrasse (m2): 80

A ENFANTS: -

de plante: -

MESSAGE -



DESCRIPTION

NEW BUILD TOP FLOOR APARTMENT IN CIUDAD QUESADA New Build top floor apartment in Ciudad Quesada. Beautiful apartment with 2 bedrooms and 1 bathroom, living room / kitchen, terrace and salarium with direct views of the golf course. Comunal areas with swimming pool, barbecue, leisure and outdoor gym. Residential located on the Golf Course `` LA MARQUESA `` in Ciudad Quesada, near the beaches of Guardamar and 35 minutes from Alicante airport. Ciudad Quesada is a large urbanization within Rojales became in a small and lovely village provided with all main services and many leisure points. The place has a wonderful location next to La Marquesa golf course. To enjoy the beautiful beaches of Guardamar del Segura only takes ten minutes by car. It is also partially surrounded by the lagoon of La Mata, a space of biodiversity and nature with 700 hectares. Located on a pleasant south-facing hillside in the Alicante province, Ciudad Quesada offers a great and exciting quality of life in the sun. The city has developed rapidly over the past two decades, with a wide spectrum of properties to suit all needs and budgets, including detached villas, smaller gated communities, bungalows, and apartments. The amenities available within Quesada

have also improved over time, so it is now home to a wide variety of bars, restaurants, shops, and supermarkets, along with several banks, dental clinics, pharmacies, hair salons, newsagents, tobacconists, and a new Medical Center located in the Doña Pepa urbanization.



VIEW

- Panoramico

CLIMATISATION

- Central

PARKING PAS. CAR

: 1

**JARD RIVIÈRE ET
TERRASSES N**

- Terrasse ouverte
- clôtures
- Jard RIVER n privée

EXTRA

- Porte de sécurité
- Elevator













PLANTA 0

ZONA A - PRIVATIVA
Total Superficies útiles: 146,35 m² aprox.

ZONAS COMUNES CO-HOUSING
195 m² aprox.

PISCINA	3 x 9
JARDINES	SI
ZONA BARBACOA	SI
LAVANDERÍA	SI
ASCENSOR	SI

SUPERFICIE TOTAL PARCELA
393 m²



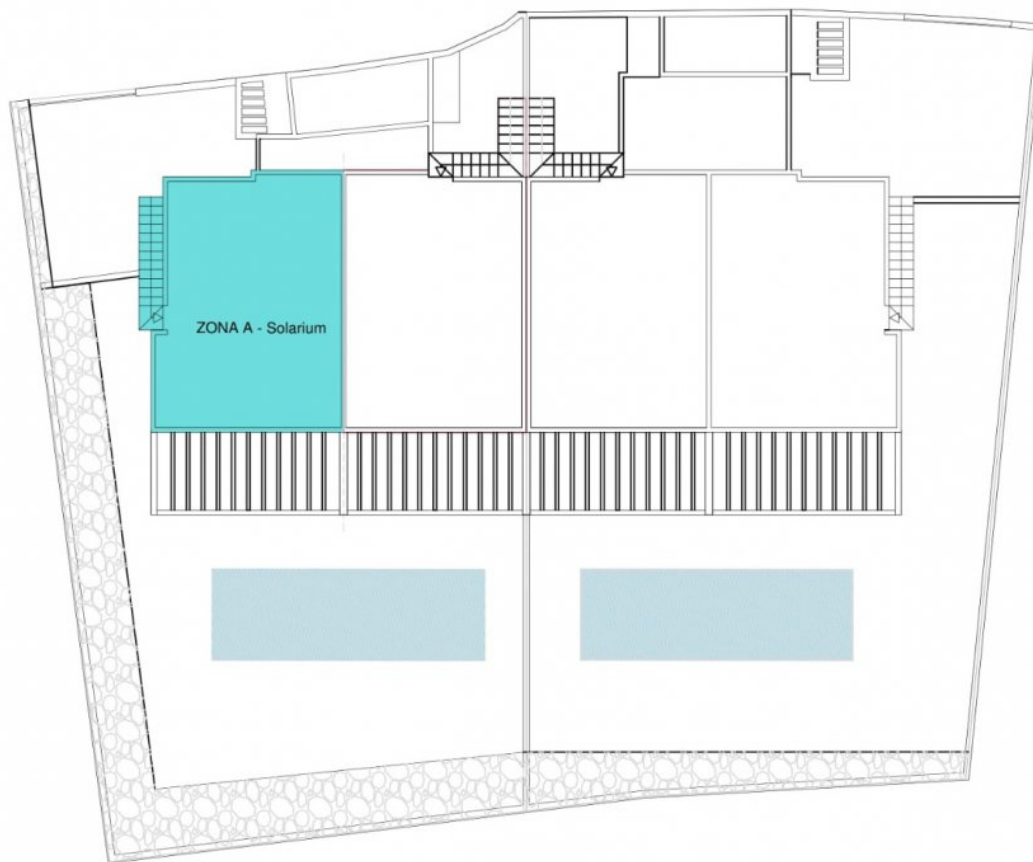
PLANTA +1

ZONA A - PRIVATIVA
Total Superficies útiles: 146,35 m2

ZONAS COMUNES CO-HOUSING
195 m2 aprox.

PISCINA	3 x 9
JARDINES	SI
ZONA BARBACOA	SI
LAVANDERÍA	SI
ASCENSOR	SI

SUPERFICIE TOTAL PARCELA
393 m2



"OUR EXPERIENCE IS YOUR GUARANTEE"