



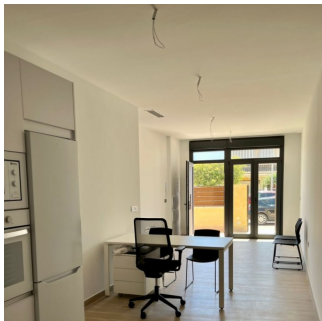
REF: # 9768

COSTA MURCIA



INFO

PRIX:	141.500 €
TYPE:	Appartement
CITY:	Costa Murcia
CHAMBRES:	2
Ba ENFANTS:	2
Built (m2):	74
pas (m2):	-
Terrasse (m2):	49
A ENFANTS:	
de plante:	1
MESSAGE	-



DESCRIPTION

MAGNIFICENT GROUND FLOOR APARTMENT IN SANTIAGO DE LA RIBERA only 600m from the beach. This 74m2 key ready apartment consists of 2 bedrooms, 2 fitted bathrooms, with a contemporary style open planned concept that includes a fully-fitted kitchen and lounge-dining room. There is a large 49m2 terrace area to enjoy all hours of sunshine every day of the year. The property is of the highest standard and equipped with a completely furnished kitchen including oven and microwave in column, fridge, dishwasher, induction hob, extractor fan and washing machine. There is lighting installed in the dining room, kitchen, corridors and bathrooms and as well as in the outdoor areas. The bedrooms have lined wardrobes with drawers and the bathrooms are installed with a toilet, vanity unit, mirror and shower with screen panels. Additional features include; parking space, motorized blinds and ducted air conditioning. Santiago de la Ribera is on the Mar Menor, on the coast of Murcia. This old fishing village has 4 kilometres of beach,

with fine, golden sand. Its Mediterranean waters are ideal for enjoying the sun, sea and water sports all year round. It has an attractive, palm-lined promenade that runs the length of the beach. Complex located 30 minutes from Murcia - Corvera airport and 1 hour Alicante airport.



STYLE	VIEW	CLIMATISATION	DISTANCE :
<ul style="list-style-type: none">moderne	<ul style="list-style-type: none">Panoramico	<ul style="list-style-type: none">Central	Beach : 500 m aéroport: 40 Km
PARKING PAS. CAR	CUISINE	JARD RIVIÈRE ET TERRASSES N	EXTRA
: 1	<ul style="list-style-type: none">cuisinecuisine équipée	<ul style="list-style-type: none">Terrasse ouverteFeux extérieurs	<ul style="list-style-type: none">intégré









































"OUR EXPERIENCE IS YOUR GUARANTEE"