



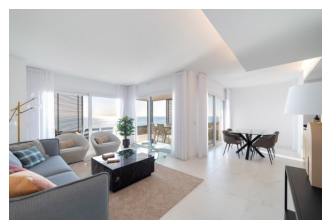
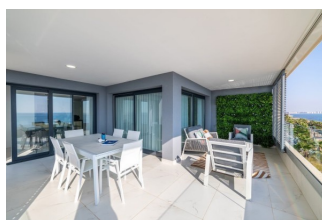
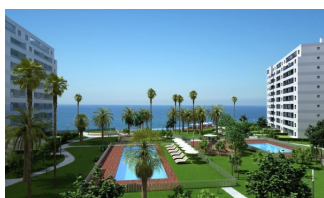
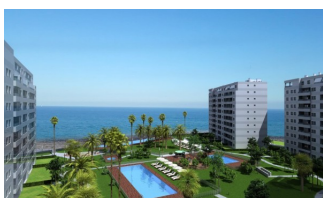
REF: # 9761

TORREVIEJA (PUNTA PRIMA)



INFO

PRIX:	525.000 €
TYPE:	Appartement
CITY:	Torrevieja (Punta Prima)
CHAMBRES:	2
Ba ENFANTS:	2
Built (m2):	72
pas (m2):	-
Terrasse (m2):	16
A ENFANTS:	-
de plante:	-
MESSAGE	-



DESCRIPTION

BEAUTIFUL RESIDENTIAL COMPLEX OF APARTMENTS IN PUNTA PRIMA, FIRST LINE OF SEA WITH EXCLUSIVE VIEWS. This 72m2 apartment consists of 2 bedrooms, 2 bathrooms, underground parking space, a storage room and a 24m2 private terrace with magnificent views of the Mediterranean Sea and the beach of Punta Prima. It has been designed with comfort and convenience in mind, with excellent qualities, thus allowing you to fully enjoy the common areas of the residential area. The residential has large garden areas and complete facilities from which you can enjoy the sun and sea views; these common areas are equipped with 3 swimming pools, one of which is partially heated. Children can enjoy their own children's pool, as well as a children's play area. From the urbanization, there is a direct access to the promenade. Punta Prima, located just 5 km from Torrevieja, is characterized by good communication and health infrastructures, the proximity to Alicante airport, and the number of services open throughout the year. Just 10 km away we can find the golf courses of Villamartín, Campoamor, Las Ramblas, Las Colinas and Lo Romero, as well as the commercial

centers of La Zenia and Habaneras. ? Murcia and Alicante Airports only 50 minutes away.



STYLE <ul style="list-style-type: none">• moderne• contemporain	VIEW <ul style="list-style-type: none">• Panoramico• Ocean	CLIMATISATION <ul style="list-style-type: none">• Central	DISTANCE : <div>Beach : 50 m</div> <div>aéroport: 70 Km</div> <div>: 500 m</div>
PARKING PAS. CAR <div>Garage no. Car : 1</div> <div>: 1</div>	ZONES <ul style="list-style-type: none">• ou chambre Baignade	ÉTAGE <ul style="list-style-type: none">• tuiles• Stone	CUISINE <ul style="list-style-type: none">• cuisine• cuisine équipée• granit
JARD RIVIÈRE ET TERRASSES N <ul style="list-style-type: none">• Terrasse ouverte• Feux extérieurs• Playground• clôtures• murs en pierre• hayon• Jard RIVER Communauté	EXTRA <ul style="list-style-type: none">• intégré• Porte de sécurité• Double vitrage• stockage• Elevator		



















"OUR EXPERIENCE IS YOUR GUARANTEE"