



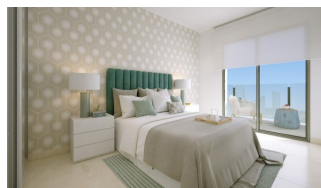
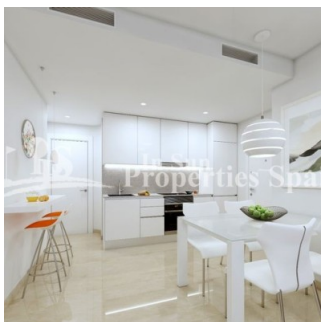
REF: # 9634

TORREVIEJA (TORREVIEJA CENTRO)



#### INFO

PRIX:	179.000 €
TYPE:	Appartement
CITY:	Torrevieja (Torrevieja centro)
CHAMBRES:	2
Ba ENFANTS:	1
Built ( m2 ):	71
pas ( m2 ):	-
Terrasse ( m2 ):	-
A ENFANTS:	-
de plante:	-
MESSAGE	-



## DESCRIPTION

NEW BUILD APARTMENTS GROUND FLOOR IN TORREVIEJA near Los Locos Beach. This 71m2 apartment consists of 2 bedroom and 1 bathroom, integrated modern kitchen and large open-plan living/dining room, leading to a 3m2 tiled terrace. The development benefits from a rooftop communal swimming pool and sunbathing area. Torrevieja is a Spanish town in the province of Alicante, on the Costa Blanca. It is known for its superb promenade, restaurants, weekly Friday market and the Habaneras shopping centre. Only 15 minutes drive is "La Zenia Boulevard" the largest shopping centre in the Alicante region, it's a one-stop destination for clothes, shoes and general supplies. No matter what you're after, chances are you won't walk out empty-handed. It is known for its typically Mediterranean climate and coastline. It has boardwalks with resorts along its sandy beaches only 150m away! In addition to the original established Golf courses on the Orihuela Costa, Villamartin, Las Ramblas, Real Campoamor and Las Colinas, Torrevieja area is well served with excellent courses such as La Finca, La Marquesa, Las Colinas, Lo Romero and Vistabella offering different golf experiences with a variety of sea and mountain views. Alicante airport located 40 minutes away and Murcia airport about 1 hour away.

## CERTIFICAT ÉNERGÉTIQUE



STYLE

- moderne

VIEW

- Panoramico

DISTANCE :

Beach : 200 m

aéroport: 50 Km

JARD RIVIÈRE ET  
TERRASSES N

- Terrasse ouverte

EXTRA

- Porte de sécurité



























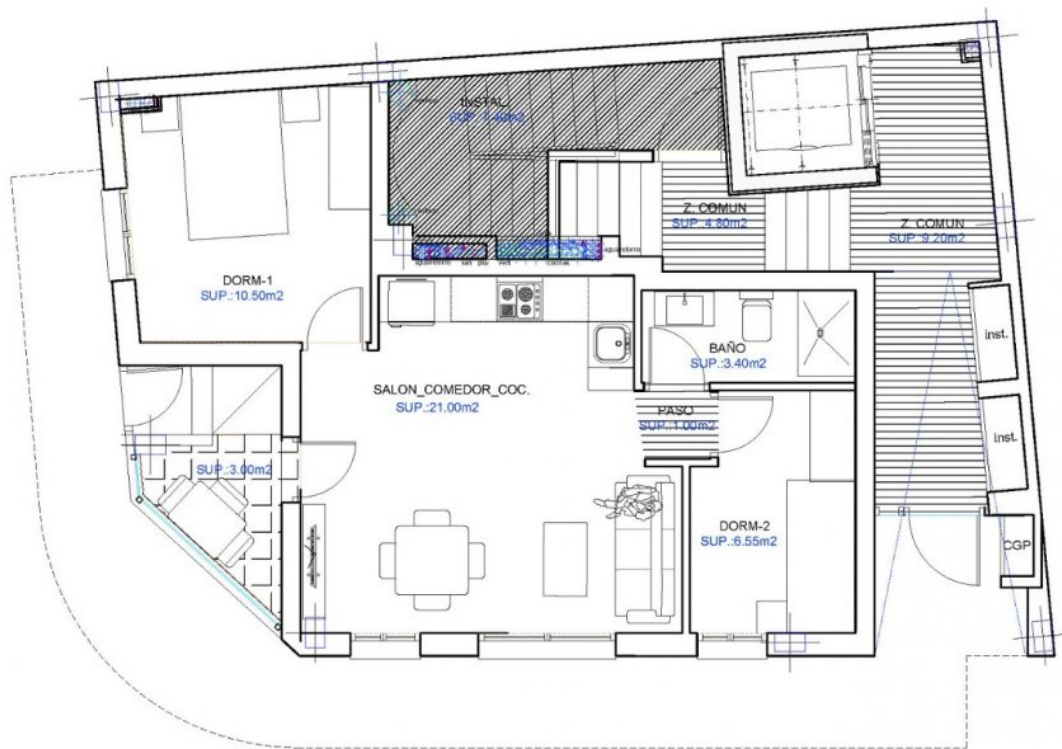








CUADRO DE SUPERFICIES SUPERFICIE VIVIENDA TIPO (PLANTA BAJA)	
	VIV-A
SALON COMEDOR COCINA	21,00 m <sup>2</sup>
PASILLO	1,00 m <sup>2</sup>
BAÑO-1	3,40 m <sup>2</sup>
DORMITORIO-1	10,50 m <sup>2</sup>
DORMITORIO-2	6,55 m <sup>2</sup>
SUP. ACCESO	5,40 m <sup>2</sup>
<b>SUP. ÚTIL VIVIENDA</b>	<b>47,85 m<sup>2</sup></b>
<b>SUP. CONSTRUIDA COMUNES</b>	<b>15,73 m<sup>2</sup></b>
<b>SUPERFICIE CONSTRUIDA TOTAL (terrazas al 100% y E.C.)</b>	<b>72,08 m<sup>2</sup></b>

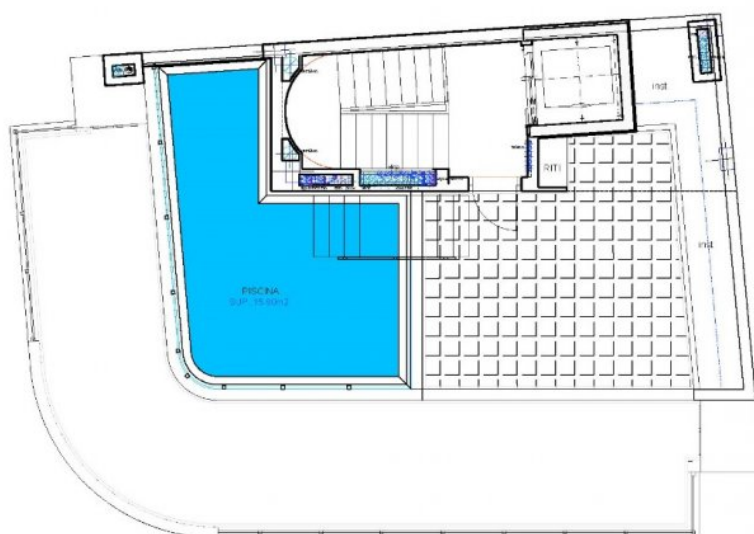


**PLANTA BAJA**

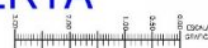


**PLANTA BAJA**





PLANTA CUBIERTA



PLANTA CUBIERTA/SOLARIUM





***"OUR EXPERIENCE IS YOUR GUARANTEE"***