



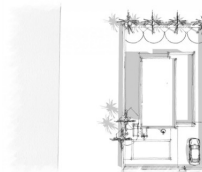
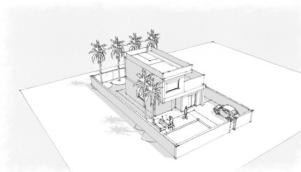
REF: # 9582

ROJALES (DONA PEPA)



INFO

PRIX:	449.900 €
TYPE:	Villa
CITY:	Rojales (Dona Pepa)
CHAMBRES:	3
Ba ENFANTS:	2
Built (m2):	102
pas (m2):	306
Terrasse (m2):	52
A ENFANTS:	-
de plante:	-
MESSAGE	-



DESCRIPTION

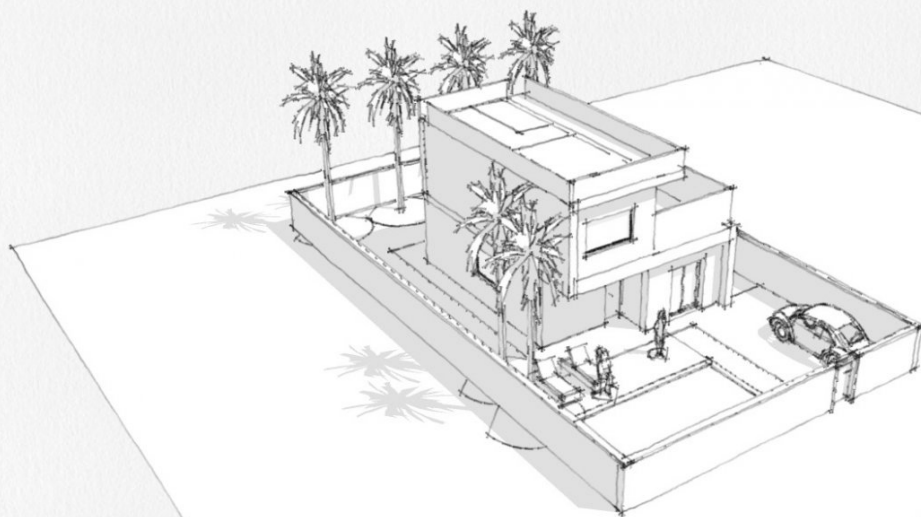
BEAUTIFUL NEW BUILD VILLA IN CIUDAD QUESADA, ROJALES.
This 102m2 beautiful villa build is over 2 floors with 3 bedrooms, 2 bathrooms, an open plan kitchen with lounge area and both a large 20m2 terrace and a 32m2 solarium. Situated in Ciudad Quesada this villa has a 306m2 garden with parking and the option of a private pool at an additional cost. Rojales it is a lovely village with all services such as supermarkets, pharmacies, banks, restaurants and Natural Park located very close to the villas. There are 3 golf courses nearby, water parks and blue flag beaches are just a short 10 minute drive away. Alicante Airport is 35 minutes away (60km) and Murcia (Corvera) Airport is 45 minutes away.

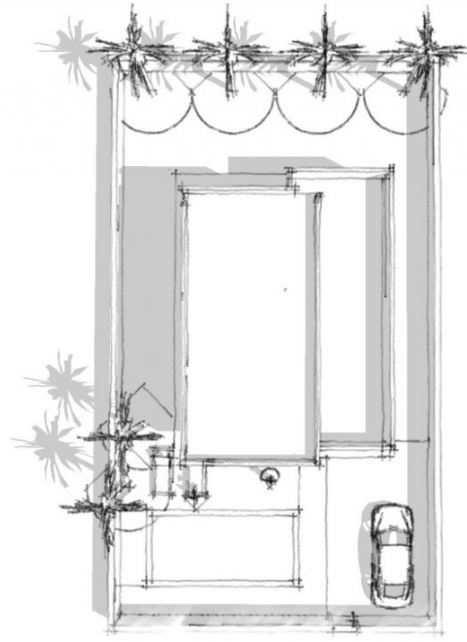
CERTIFICAT ÉNERGÉTIQUE

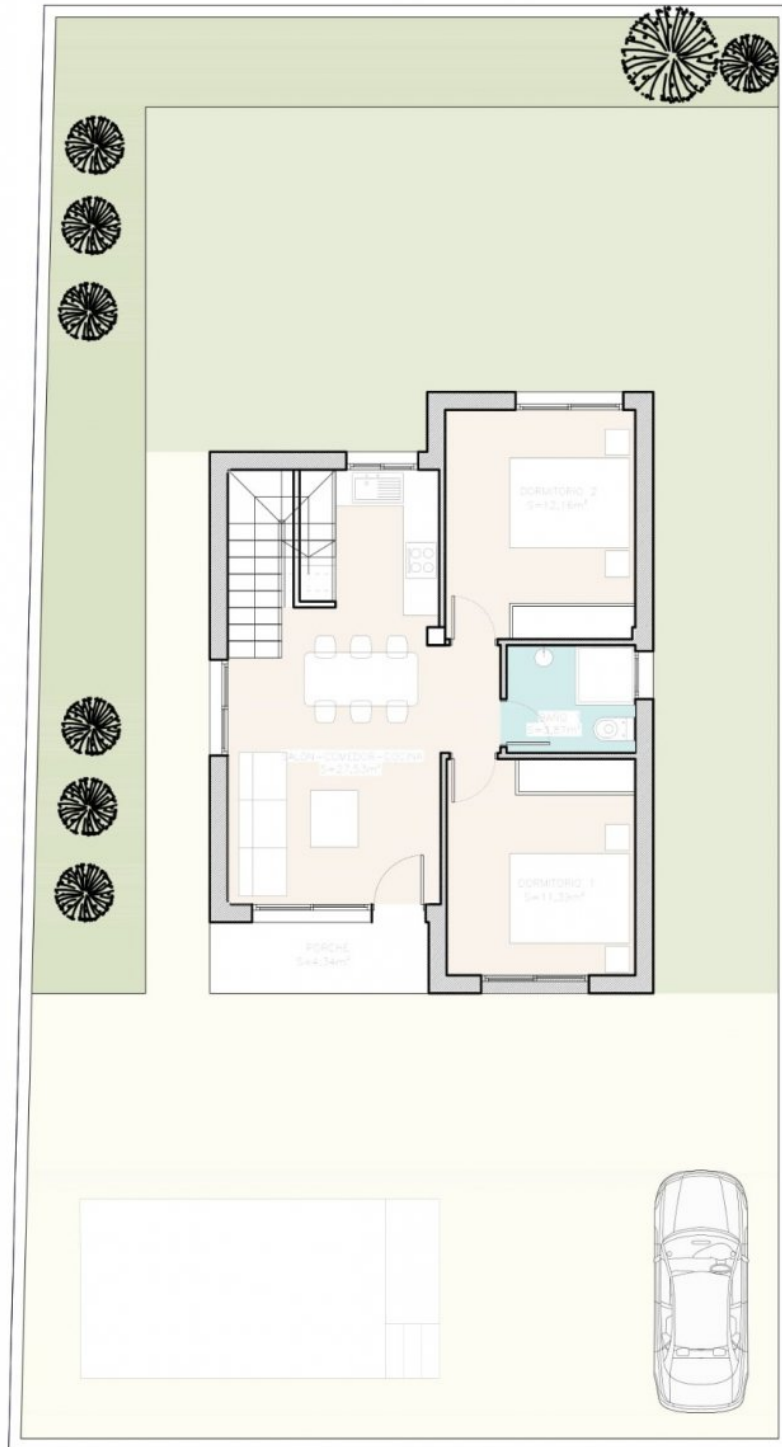


STYLE	VIEW	CLIMATISATION	DISTANCE :
<ul style="list-style-type: none">moderne	<ul style="list-style-type: none">Panoramico	<ul style="list-style-type: none">Central	Beach : 8 Km aéroport: 60 Km
PARKING PAS. CAR	CUISINE	JARD RIVIÈRE ET TERRASSES N	EXTRA
: 1	<ul style="list-style-type: none">cuisine	<ul style="list-style-type: none">Terrasse ouverteclôturesJard RIVER n privée	<ul style="list-style-type: none">Porte de sécurité

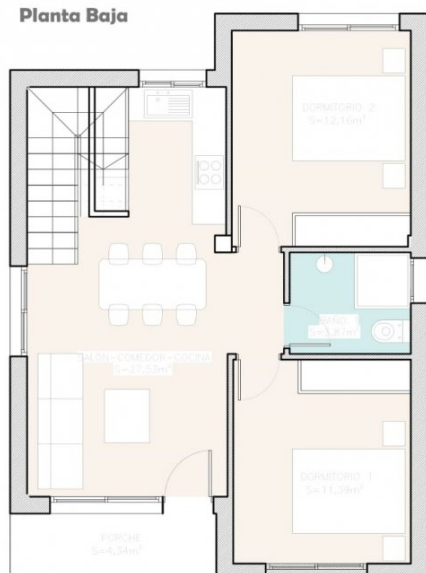








Planta Baja



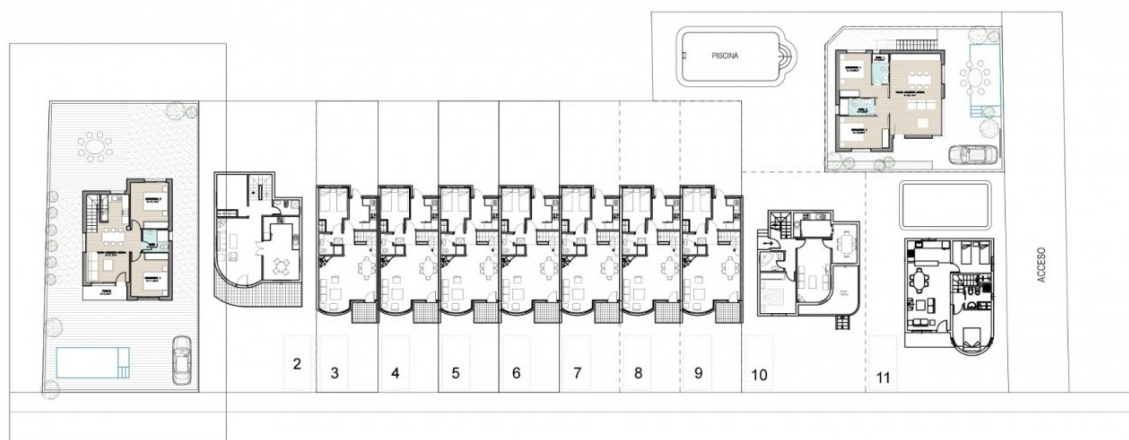
Planta Primera



VIVIENDA 1

SUP. CONSTR. VIV.P.B.....66,44 m²
 PORCHE CUB. (50%)2,17 m²
 SUP. CONSTR. VIV.P.1.....31,83 m²
 SUP. CONST.TOTAL100,44m²
 SUP. ÚTIL SOLARIUM.....32,56 m²

PARCELA 306,00 m²



PARCELA 1
 SUP:306,00m²





"OUR EXPERIENCE IS YOUR GUARANTEE"