



REF: # 9504

TORREVIEJA



INFO

PRIX: 750.000 €

TYPE: Villa

CITY: Torrevieja

CHAMBRES: 3

Ba ENFANTS: 4

Built (m2): 280

pas (m2): 400

Terrasse (m2): 60

A ENFANTS: -

de plante: -

MESSAGE -



DESCRIPTION

EXCLUSIVE VILLA IN LOS ALTOS with private pool. This 280m2 villa is built on a plot of 400m2 and consists of 3 double bedrooms, 4 bathrooms, living room /dining room, kitchen, a 60m2 terrace and a private pool. It is equipped with airconditioning, underfloor heating and sanitary hot water with aerothermics. Located in one of the privileged areas of the Costa Blanca South, more specifically in Los Altos, 5 minutes from Playa Punta Prima, Cala Ferry and is close to all services; hospitals, schools, restaurants, cafes, shops, malls, as well as freeway access. Just 5 minutes drive away you will find several of the best Golf Clubs on the Alicante coast, such as the Las Ramblas, Villamartín, La Finca, La Marquesa, RCG Campoamor and Las Colinas Golf Courses. Only 7km away is the town of Torrevieja which is known for its superb promenade, restaurants, weekly Friday market and the Habaneras shopping centre. It has a wide range of cultural and leisure activities all year round. The largest shopping centre in the Alicante region is "La Zenia Boulevard" just 3km drive away, it's a one-stop destination for clothes, shoes and general supplies. No matter what you're after, chances are you won't walk out empty-handed. Nearest Airports: Alicante 65kms / 40 minutes drive and Murcia (Corvera) 60kms / 40 minutes drive

CERTIFICAT ÉNERGÉTIQUE



STYLE	VIEW	CLIMATISATION	DISTANCE :
<ul style="list-style-type: none">moderne	<ul style="list-style-type: none">Panoramico	<ul style="list-style-type: none">Central	Beach : 4 Km
POSITION	JARD RIVIÈRE ET TERRASSES N	CHAUFFAGE	aéroport: 60 Km
Est sud	<ul style="list-style-type: none">Terrasse ouverte	<ul style="list-style-type: none">central au gazRadio	



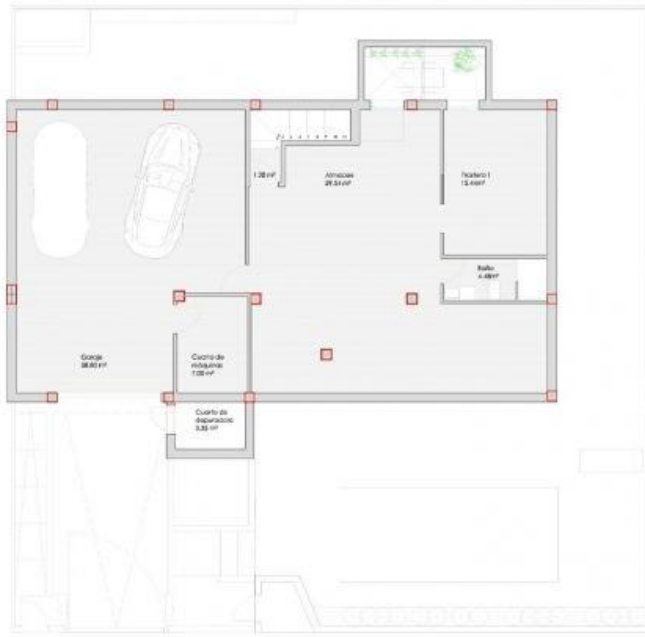












EDIFICABILIDAD PERMITIDA 0.3719 m²/m² = 148.79 m²

Superficie construida planta sótano 148.39 m²

Superficie construida planta baja 139.80 m²

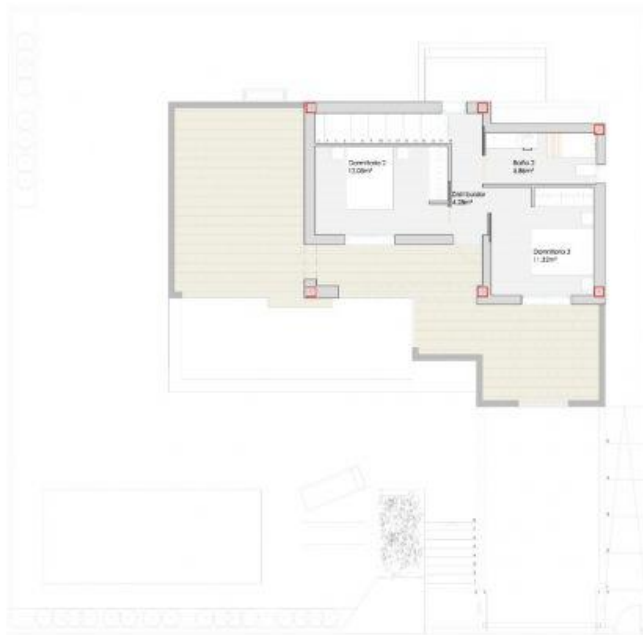
Porche (no computable) 24.80 m²

1
proyecto
Atlas de Torrealeja, s.l.

5

10
proyecto
2 Viviendas y 2 plazas
Atlas de Torrealeja, s.l.

15



EDIFICABILIDAD PERMITIDA 9.3719 m²/m² = 148.79 m²

Superficie construida planta sótano 150.83 m²

Superficie construida planta baja 104.36 m²

Superficie construida planta 1^a 44.50 m²

Total superficie construida vivienda 148.70 m²

Porche (no computable) 24.80 m²

1
proyecto
Altos de Torre Vieja, S.L.

5

10
proyecto
2 Viviendas y 2 piscinas

15



EDIFICABILIDAD PERMITIDA 9.3719 m²/m² = 148.79 m²

Superficie construida planta sótano 150.83 m²

Superficie construida planta baja 104.36 m²

Superficie construida planta 1^a 44.50 m²

Total superficie construida vivienda 148.70 m²

Porche (no computable) 24.80 m²

1
proyecto
Altos de Torre Vieja, S.L.

5

10
proyecto
2 Viviendas y 2 piscinas

15



EDIFICABILIDAD PERMITIDA 0.3719 m²/m² = 148.79 m²

Superficie construida planta sótano: 130.83 m²

Superficie construida planta baja: 104.26 m²

Superficie construida planta 1ª: 44.50 m²

Total superficie construida vivienda: 148.70 m²

Porche (no computable): 24.80 m²

1
proyecto
Atlas de Torrealeja, s.l.

5

10
proyecto
2 Viviendas y 2 piscinas

15



EDIFICABILIDAD PERMITIDA 0.3719 m²/m² = 148.79 m²

Superficie construida planta sótano: 136.39 m²

Superficie construida planta baja: 139.80 m²

Porche (no computable): 24.80 m²

1
proyecto
Atlas de Torrealeja, s.l.

5

10
proyecto
2 Viviendas y 2 piscinas

15



"OUR EXPERIENCE IS YOUR GUARANTEE"