



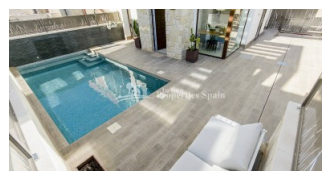
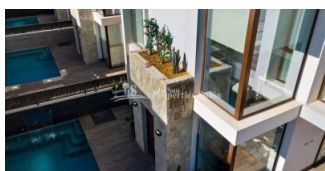
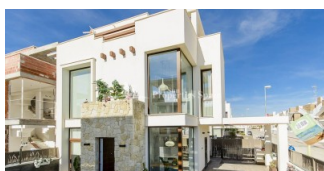
REF: # 9500

ROJALES (DONA PEPA)



#### INFO

PRIX:	579.000 €
TYPE:	Villa
CITY:	Rojales (Dona Pepa)
CHAMBRES:	3
Ba ENFANTS:	3
Built ( m2 ):	109
pas ( m2 ):	227
Terrasse ( m2 ):	57
A ENFANTS:	-
de plante:	-
MESSAGE	-



#### DESCRIPTION

FANTASTIC VILLA DETACHED IN ROJALES with private pool and garden. This 109m2 south-facing detached villa consists of 3 bedrooms, 3 bathrooms, a 12 m2 porch / pergola on the ground floor, a 45 m2 solarium and a 227m2 private garden. Within the garden is a 6.5x3.3 swimming pool with colored lights, designer tile, a brick staircase and a 1.20 waterfall with a bench to sit underneath. The villa has been designed with the highest quality materials using the most careful technology to provide the greatest comfort. This residence is located in one of the most beautiful and quiet areas between Ciudad Quesada and Pueblo Bravo, near the Natural Park of Las Lagunas de La Mata and Torrevieja and very close to the beaches of Guardamar only 7km away. For golf lovers the two closest courses are La Marquesa Golf in Ciudad Quesada only 3km drive and La Finca Golf Course in Algorfa just 10km in Algorfa. Others nearby include Las Colinas Golf and Country Club, Vistabella Golf and Villamartin Golf to name a few. Villamartin Golf Course is now one of the most recognised golf courses on the Costa Blanca. There are shopping centers nearby the Habaneras shopping centre in Torrevieja and only 20 minutes drive there is "La Zenia Boulevard" the largest shopping centre in the Alicante region, it's a one-

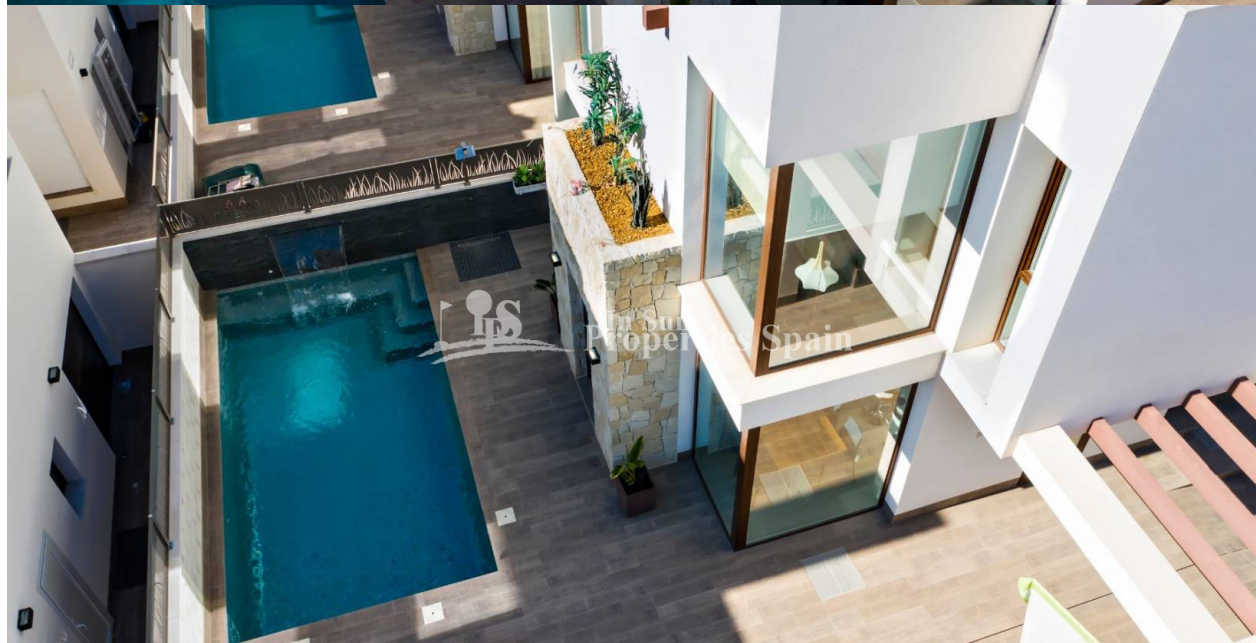
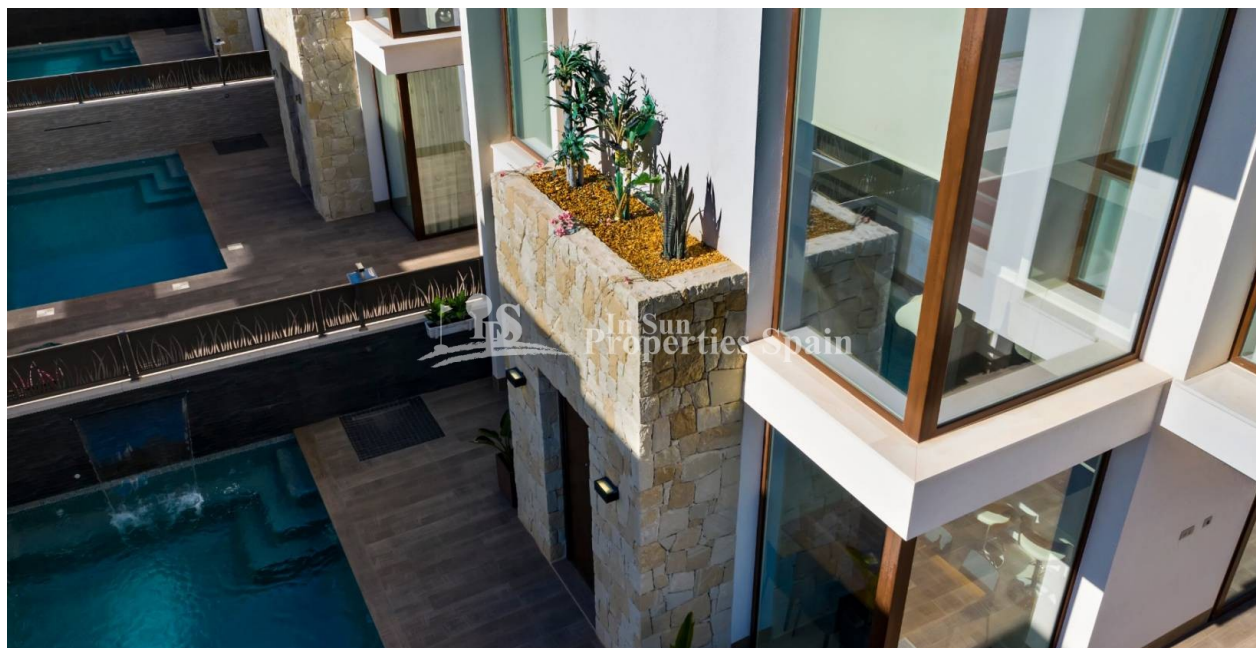
stop destination for clothes, shoes and general supplies. No matter what you're after, chances are you won't walk out empty-handed. Alicante Airport is 35 mins (50km) drive away and Murcia (Corvera) Airport is 55 minutes (75km).



STYLE	VIEW	CLIMATISATION	DISTANCE :
<ul style="list-style-type: none"><li>moderne</li></ul>	<ul style="list-style-type: none"><li>Panoramico</li></ul>	<ul style="list-style-type: none"><li>Central</li></ul>	Beach : 7 Km aéroport: 50 Km
POSITION	MEUBLÉ	PARKING PAS. CAR	ÉTAGE
Sur	<ul style="list-style-type: none"><li>Vide</li></ul>	: 1	<ul style="list-style-type: none"><li>tuiles</li><li>Stone</li></ul>
CUISINE	JARD RIVIÈRE ET TERRASSES N	EXTRA	
<ul style="list-style-type: none"><li>cuisine</li></ul>	<ul style="list-style-type: none"><li>Terrasse ouverte</li><li>Playground</li><li>clôtures</li><li>Jard RIVER n privée</li></ul>	<ul style="list-style-type: none"><li>intégré</li><li>Porte de sécurité</li><li>Double vitrage</li></ul>	































**"OUR EXPERIENCE IS YOUR GUARANTEE"**