



REF: # 6027

FINESTRAT (FINESTRAT HILLS)



INFO

PRIX:	250.000 €
TYPE:	Appartement
CITY:	Finestrat (Finestrat Hills)
CHAMBRES:	2
Ba ENFANTS:	2
Built (m2):	78
pas (m2):	-
Terrasse (m2):	60
A ENFANTS:	
de plante:	-
MESSAGE	-



DESCRIPTION

Discover luxury homes with an amazing view to a beautiful horizon, the Mediterranean Sea and to Benidorm skyline. All apartments have a big and sunny terrace. Designed with a smart style, this allows optimizing the day and night zones, as well as the interior and exterior spaces to make your life more comfortable. Beside every apartment is equipped with the most modern technology to increase comfort: aerothermal climate control, smart mailbox, thermal and acoustic isolation... The Resort is designed so you can enjoy the green areas, sport fields, exterior outdoor and indoor heated pools, Jacuzzi, sauna, paddle, gym, etc. Every place is accessible for persons with reduced mobility. You will live peacefully in a place with private security. Only a few minutes away from shops and restaurants and 5 minutes away to three, 18 holes golf courses. 40 minutes away from the International Airport of Alicante and the high-speed train station. Seascape Resort is closer than you could ever imagine. Surface 99.70 m², 2 bathroom(s), 2 bedroom(s). Exterior, Parking lot, Terrace, Fully-fitted kitchen, Air conditioner, Swimming pool, Lift, Storage room, Built-in wardrobes, Independent water heater, Adapted for people with disabilities, Not furnished, Windows of climatic

type, Lacquered inside doors, Plain paint Energy certificate:: B

CERTIFICAT ÉNERGÉTIQUE

energy house
Image type unknown
<https://iberiaproerty.fr//assets/images/viass/energy/E>

STYLE	VIEW	CLIMATISATION	DISTANCE :
<ul style="list-style-type: none">moderne	<ul style="list-style-type: none">PanoramicoOceanune vue sur la montagne	<ul style="list-style-type: none">Central	Beach : 2 Km aéroport: 40 Km : 500 m
POSITION	MEUBLÉ	PARKING PAS. CAR	ZONES
Sur	<ul style="list-style-type: none">Vide	Garage no. Car : 1 : 1	<ul style="list-style-type: none">ou chambre BAIGNADE
ÉTAGE	CUISINE	JARD RIVIÈRE ET TERRASSES N	EXTRA
<ul style="list-style-type: none">flottant plancher	<ul style="list-style-type: none">cuisinecuisine équipée	<ul style="list-style-type: none">Terrasse couverteTerrasse ouverteFeux extérieursirrigation automatiquearbres fruitiersPalmPlaygroundPaysageclôturesmurs en pierrehayonJard RIVER Communauté	<ul style="list-style-type: none">intégréAlarmePorte de sécuritéDouble vitrageSatellite TVstockageElevatorInternet







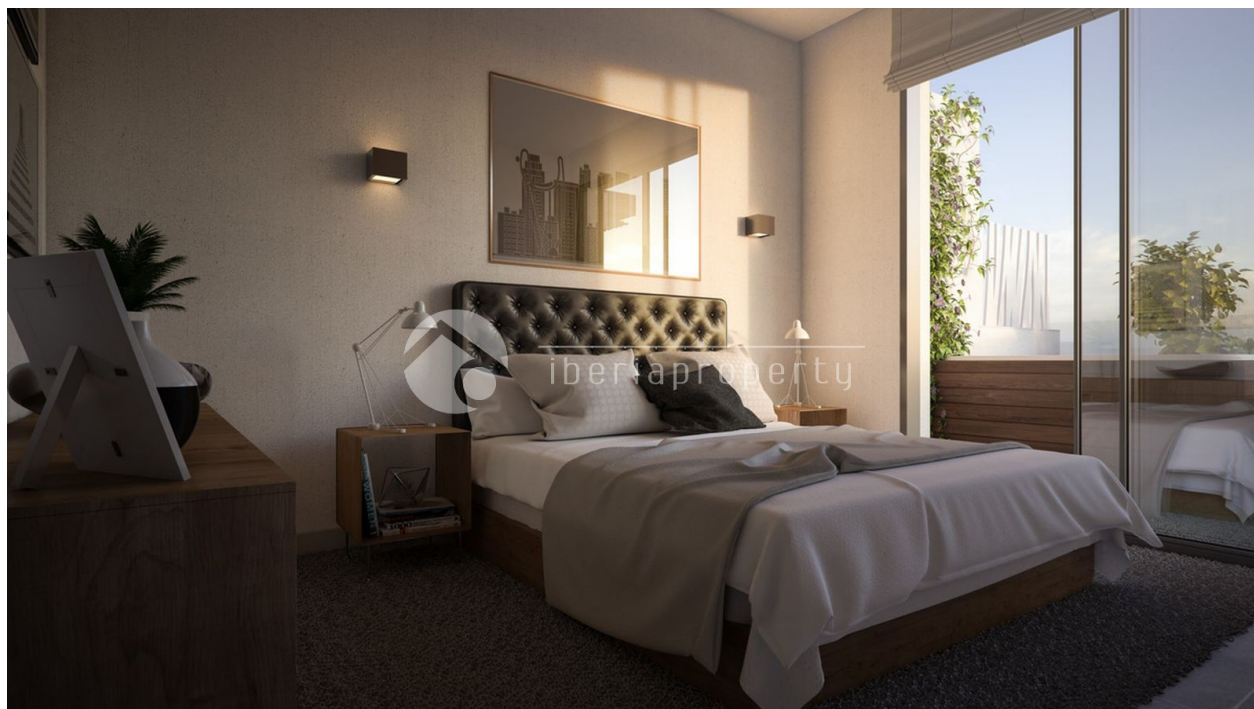


Image not found

<https://www.cmsinmo.com/imagenes/uploads/inmu/4/6027/10-BAÑO.jpg>















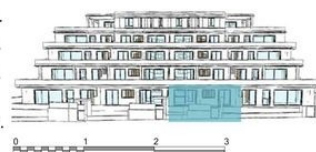
Bloque
1

Planta
0

Vivienda
C

S

TOTAL SUP. ÚTIL / LIVING AREA:	147.30 m ² .
Sup. útil vivienda / Property:	72.60 m ² .
Sup. útil terrazas y patios cubiertos / terrace covered:	5.65 m ² .
Sup. útil terrazas y patios descubiertos / terrace uncovered:	69.05 m ² .
TOTAL SUP. CONSTRUIDA / BUILD AREA:	99.70 m ² .



PLANOS COMERCIALES: Superficies, medidas, configuración, linderos y demás, son los previstos, sujetos a posibles modificaciones por exigencias técnicas, jurídicas o comerciales. No se incluye en el precio ni bienes muebles, ni elementos de jardinería. Jacuzzi optional.
COMMERCIAL FLOOR PLANS: Area, measurements, room distribution, boundaries and others may be subject to changes due to technical, legal or commercial reason. Furniture and gardening elements are not included. Jacuzzi optional

"OUR EXPERIENCE IS YOUR GUARANTEE"