



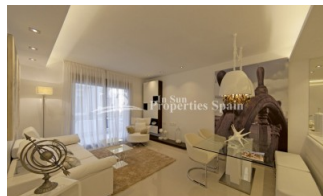
REF: # 5948

QUESADA-ROJALES (DONA PEPA)



#### INFO

<b>PRIX:</b>	188.000 €
<b>TYPE:</b>	Appartement
<b>CITY:</b>	Quesada-Rojales (Dona Pepa)
<b>CHAMBRES:</b>	3
<b>Ba ENFANTS:</b>	2
<b>Built ( m2 ):</b>	102
<b>pas ( m2 ):</b>	-
<b>Terrasse ( m2 ):</b>	35
<b>A ENFANTS:</b>	
<b>de plante:</b>	-
<b>MESSAGE</b>	-



#### DESCRIPTION

Gran Sol is a new KEY READY residential located in Doña Pepa, an elegant urbanisation with wide avenues, wonderful views to the Natural Park and the salt lakes with a wide range of leisure activities and all the necessary amenities. Available are these 3 bedrooms, 2 bathroom Ground Floor, Corner Apartments of 102m2 with 35m2 private garden with tiled area and artificial grass, storage room, access to four swimming pools, beautiful Green areas, Gym and a private gated parking inside the residential. Each block also has a lift that leads directly to the solarium. Its high-tech architecture with pure lines combines perfectly with its predominant colour (white) giving a sensation of harmony. Doña Pepa is a modern urbanisation belonging to Ciudad Quesada and has all the amenities which include supermarkets, bars, hotel and shops as well as a bank. Ciudad Quesada town centre is a ten minute walk from Doña Pepa. In Ciudad Quesada itself you will find international supermarkets, restaurants, banks, a medical centre as well as a water park. The property is ideally located if you are a golf enthusiast, with La Marquesa Golf Club just a five minute drive away. The nearest beaches are at

Guardamar/Campomar and La Mata ten minutes drive away. Nearest  
Airports: San Javier (Murcia) - Approx 30 minute drive Alicante Airport -  
Approx 30 minute drive



<b>STYLE</b> <ul style="list-style-type: none"><li>• moderne</li><li>• contemporain</li></ul>	<b>VIEW</b> <ul style="list-style-type: none"><li>• Panoramico</li></ul>	<b>DISTANCE :</b> <div>Beach : 7 Km</div> <div>aéroport: 30 Km</div> <div>: 1 Km</div>	<b>POSITION</b> <div>Ouest du Sud-Est</div>
<b>PARKING PAS. CAR</b> <div>: 1</div>	<b>ZONES</b> <ul style="list-style-type: none"><li>• stockage</li><li>• Gymnasio</li></ul>	<b>ÉTAGE</b> <ul style="list-style-type: none"><li>• tuiles</li><li>• Stone</li></ul>	<b>CUISINE</b> <ul style="list-style-type: none"><li>• cuisine</li><li>• cuisine équipée</li></ul>
<b>JARD RIVIÈRE ET TERRASSES N</b> <ul style="list-style-type: none"><li>• Terrasse couverte</li><li>• Terrasse ouverte</li><li>• Paysage</li><li>• murs en pierre</li><li>• barbecue / grill</li><li>• Jard RIVER n privée</li><li>• Jard RIVER Communauté</li></ul>	<b>EXTRA</b> <ul style="list-style-type: none"><li>• intégré</li><li>• Porte de sécurité</li><li>• Double vitrage</li><li>• Elevator</li></ul>		





















**"OUR EXPERIENCE IS YOUR GUARANTEE"**