



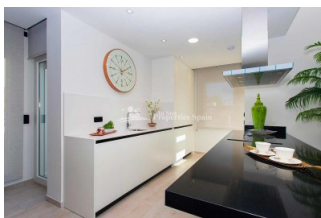
REF: # 5790

ORIHUELA COSTA (LA FINCA GOLF)



INFO

PRIX:	355.000 €
TYPE:	Villa
CITY:	Orihuela Costa (La Finca Golf)
CHAMBRES:	3
Ba ENFANTS:	2
Built (m2):	133
pas (m2):	360
Terrasse (m2):	54
A ENFANTS:	
de plante:	-
MESSAGE	339.000 €



DESCRIPTION

A new KEY READY project of truly stunning Detached Villas located at LA FINCA Golf Club, ALGORFA. The complex itself is located in an exclusive environment, surrounded by the superb course of La Finca Golf which is considered one of the best courses in the region and only 15 minutes away from the natural and lovely large beaches of Guardamar. You can also enjoy the facilities at the 5*Hotel, like the SPA and RELAX area, tennis and paddle courts, gym etc and of course also it's wonderful Restaurant and Lounge Club. The complex is formed by 11 Detached Villas and 20 Semi-detached Villas along with a central community swimming pool, which creates an intimate and exclusive ambience. 3 Bedroom, 2 Bathroom detached villas from 133m2 on a 360m2 plot with walk-in closet to the master bedroom and under floor heating to the bathrooms. All the properties are south facing with an independent plot, spacious garden, pergola area and private parking space. There is the option to add a private swimming pool at an additional cost. DELIVERY JUNE 2019. La Finca Urbanization is located in the heart of the Vega Baja countryside, just a few minutes away from

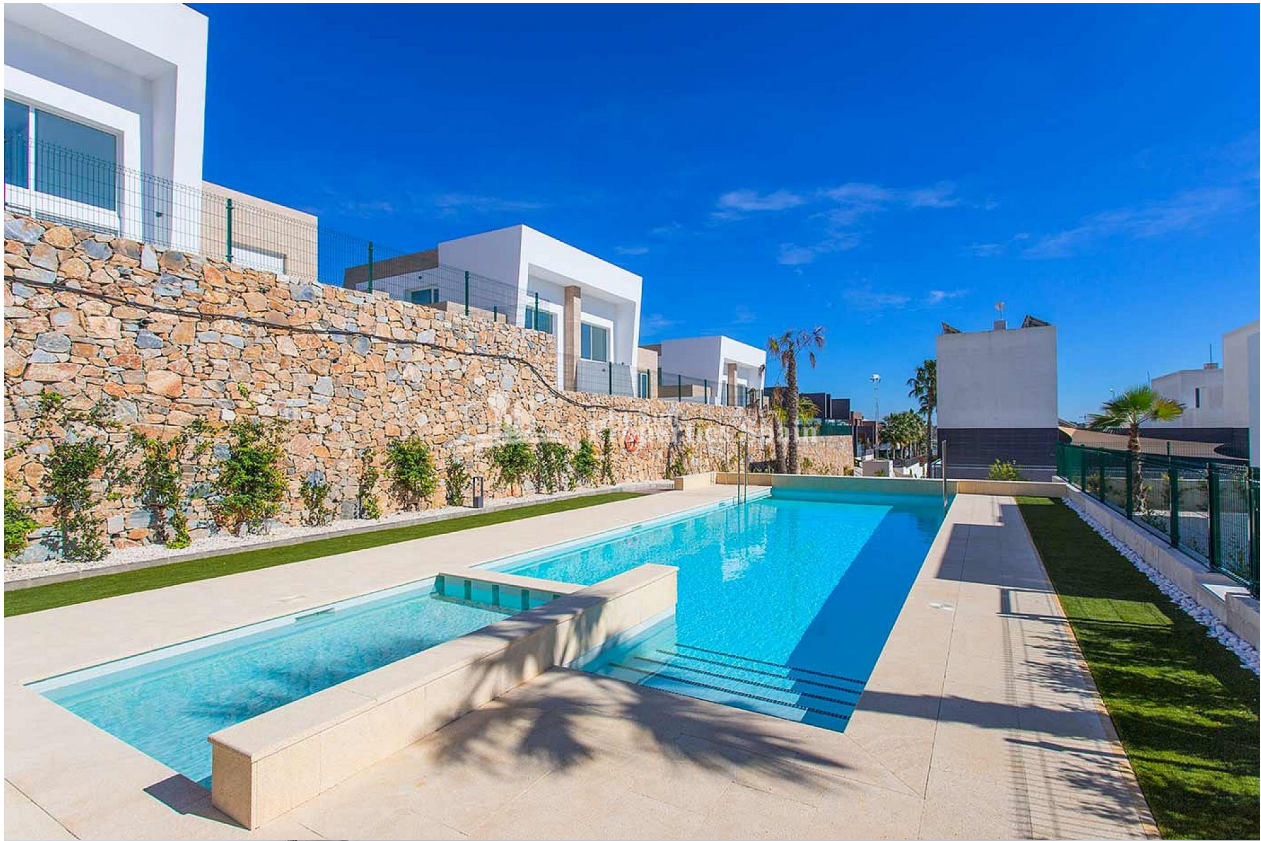
the small town of Algorfa and ust 15 minute from the beaches of Guardamar del Segura. It is ideal for those who want to live in a peaceful area with magnificent landscapes, breathing in fresh air from the mountains. It is a golfer's paradise. A grand variety of migratory birds and small animals have found a place between the greens and the extensive vegetation of this impressive golf course. Open air walks between orange and lemon plantations are quite pleasant. The recent opening of the Hotel La Finca Golf and Spa Resort (5*) promises a marvelous experience where you can completely relax.

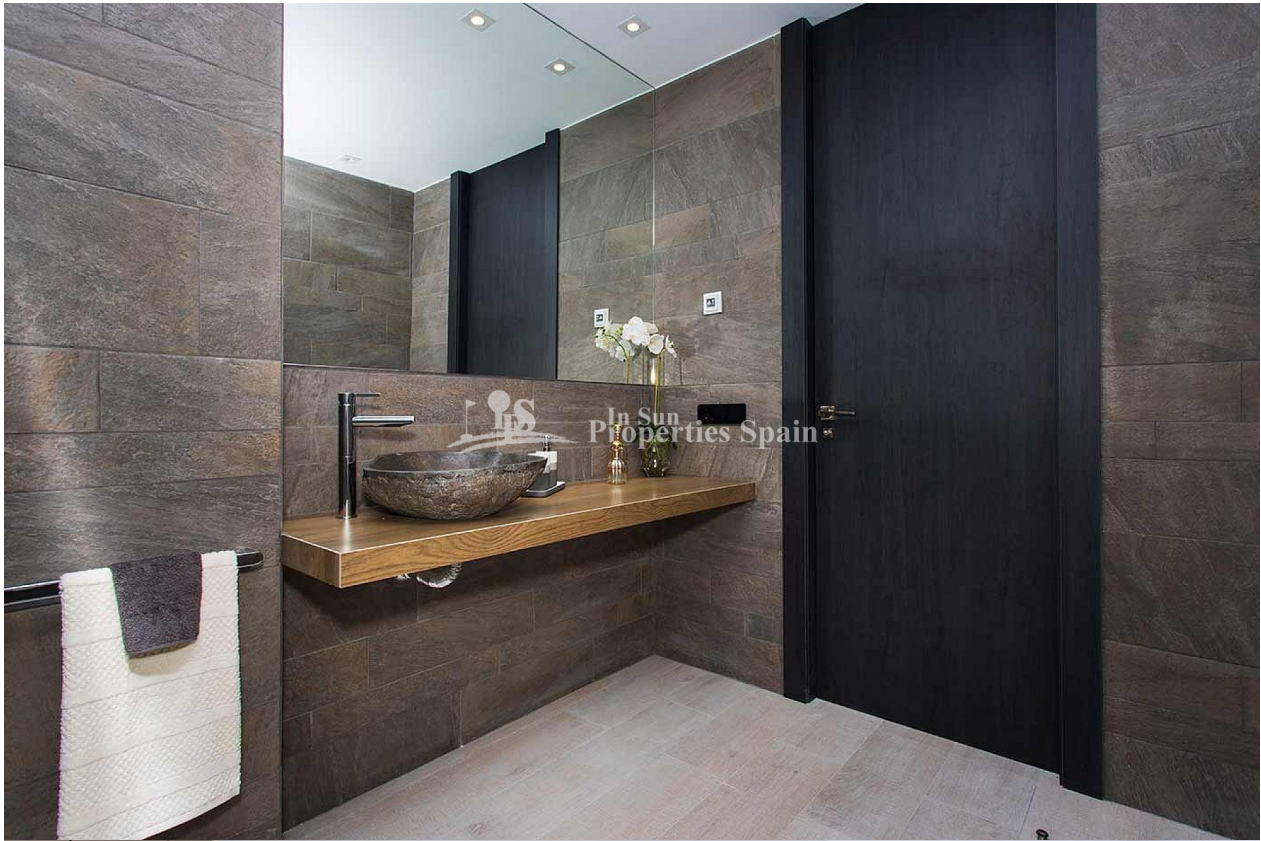


STYLE <ul style="list-style-type: none">modernecontemporain	VIEW <ul style="list-style-type: none">Panoramicoune vue sur la montagne	DISTANCE : <div>Beach : +10 Km</div> <div>aéroport: 50 Km</div> <div>: 3 Km</div>	POSITION <div>Sur</div>
MEUBLÉ <ul style="list-style-type: none">Vide	PARKING PAS. CAR <div>: 1</div>	ÉTAGE <ul style="list-style-type: none">tuilesStone	CUISINE <ul style="list-style-type: none">cuisinecuisine équipéegranit
JARD RIVIÈRE ET TERRASSES N <ul style="list-style-type: none">Terrasse couverteTerrasse ouvertePaysageJard RIVER n privéeJard RIVER Communauté	EXTRA <ul style="list-style-type: none">intégréPorte de sécuritéDouble vitrage		

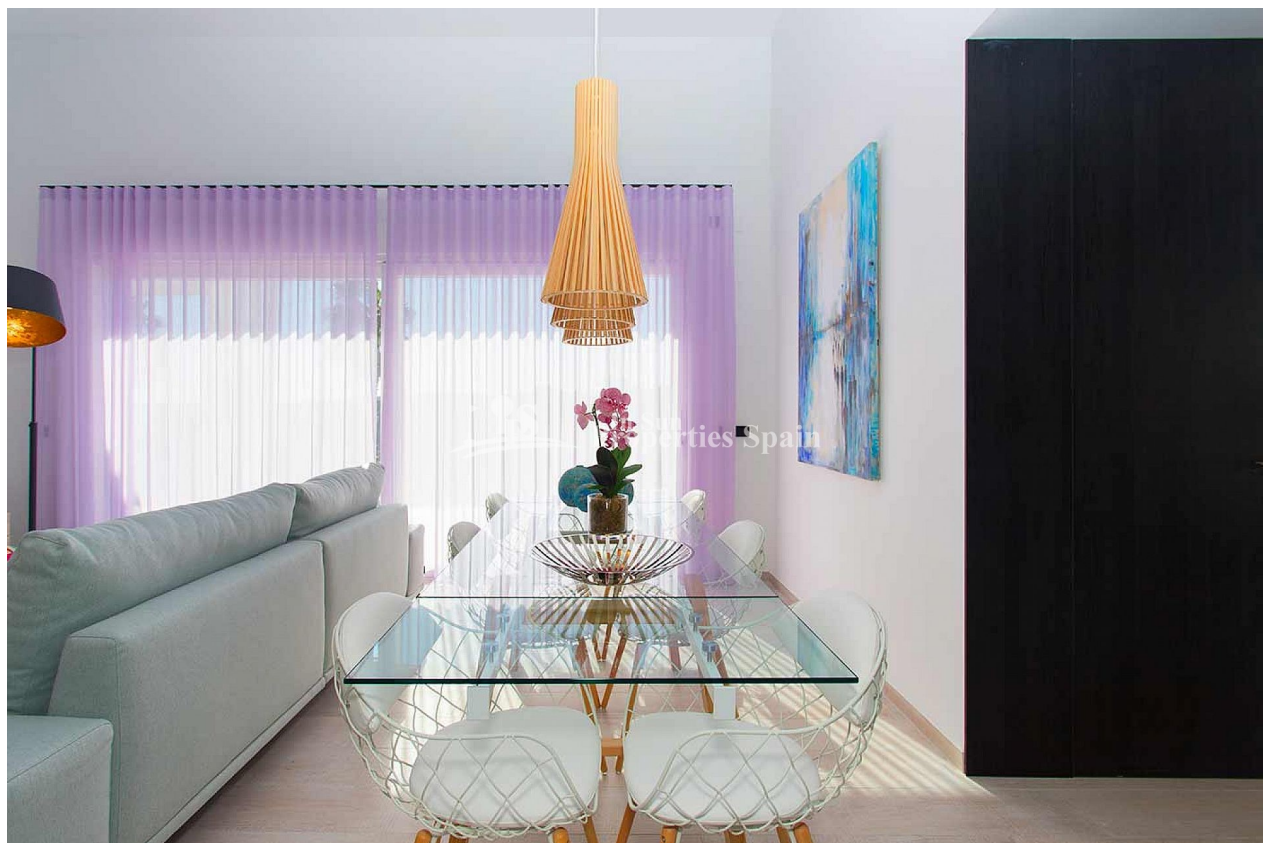




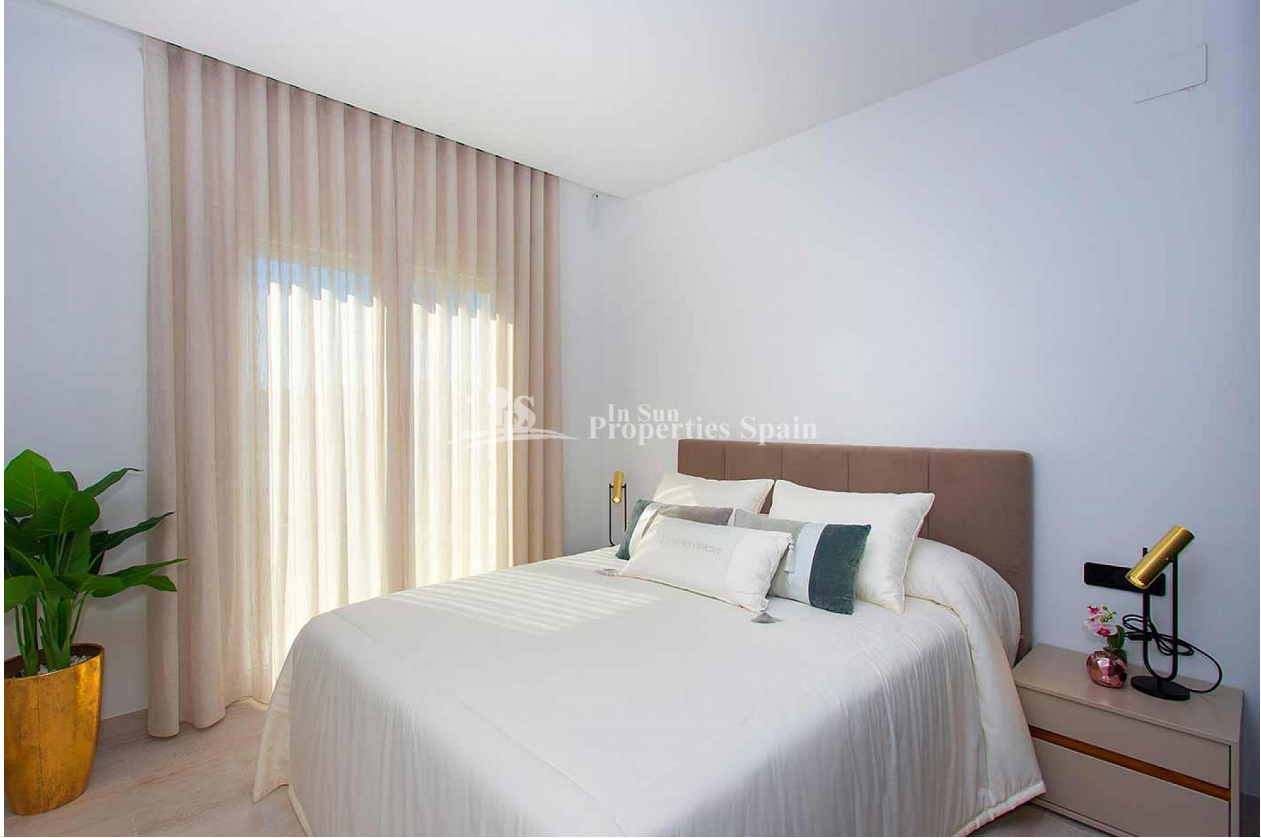














"OUR EXPERIENCE IS YOUR GUARANTEE"