



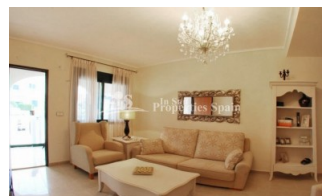
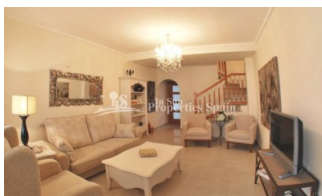
REF: # 4689

QUESADA-ROJALES (DONA PEPA)



#### INFO

<b>PRIX:</b>	169.900 €
<b>TYPE:</b>	Maison
<b>CITY:</b>	Quesada-Rojales (Dona Pepa)
<b>CHAMBRES:</b>	2
<b>Ba ENFANTS:</b>	2
<b>Built ( m2 ):</b>	82
<b>pas ( m2 ):</b>	-
<b>Terrasse ( m2 ):</b>	-
<b>A ENFANTS:</b>	-
<b>de plante:</b>	-
<b>MESSAGE</b>	-



#### DESCRIPTION

This is a lovely 2 bedroom 82m2 'Fortuna Model' Townhouse with 35m2 garden situated within a completely gated community located in DONA PEPA, close to CIUDAD QUESADA with a main entrance and exit. There are three main swimming pools and two additional pools for children. One of the main pools also has a Jacuzzi and hydro massage jet. There is an ample parking throughout the residential, however there is also a private parking space in the underground car park of the residential. The property is located close to the Playpark and Health centre within Doña Pepa, which is a modern urbanisation belonging to Ciudad Quesada and has all the amenities which include supermarkets, bars, hotel and shops as well as a bank. Ciudad Quesada town centre is a ten minute walk from Doña Pepa. In Ciudad Quesada itself you will find international supermarkets, restaurants, banks, a medical centre as well as a water park. The property is ideally located if you are a golf enthusiast, with La Marquesa Golf Club just a five minute drive away. The nearest beaches are at Guardamar/Campomar and La Mata ten minutes drive away.  
\*Furnishings at an additional cost Nearest Airports: San Javier (Murcia) -

Approx 30 minute drive Alicante Airport - Approx 30 minute drive



STYLE	VIEW	DISTANCE :	POSITION
<ul style="list-style-type: none"><li>Méditerranée</li></ul>	<ul style="list-style-type: none"><li>Panoramico</li></ul>	Beach : +10 Km aéroport: 40 Km : 1 Km	Ouest du Sud-Est
MEUBLÉ	PARKING PAS. CAR	ÉTAGE	CUISINE
<ul style="list-style-type: none"><li>meublé</li><li>Vide</li></ul>	Garage no. Car : 1 : 1	<ul style="list-style-type: none"><li>tuiles</li><li>Stone</li></ul>	<ul style="list-style-type: none"><li>cuisine</li><li>cuisine équipée</li></ul>
JARD RIVIÈRE ET TERRASSES N	EXTRA		
<ul style="list-style-type: none"><li>Terrasse couverte</li><li>Terrasse ouverte</li><li>Playground</li><li>Paysage</li><li>Jard RIVER n privée</li><li>Jard RIVER Communauté</li></ul>	<ul style="list-style-type: none"><li>intégré</li><li>Porte de sécurité</li><li>Double vitrage</li></ul>		













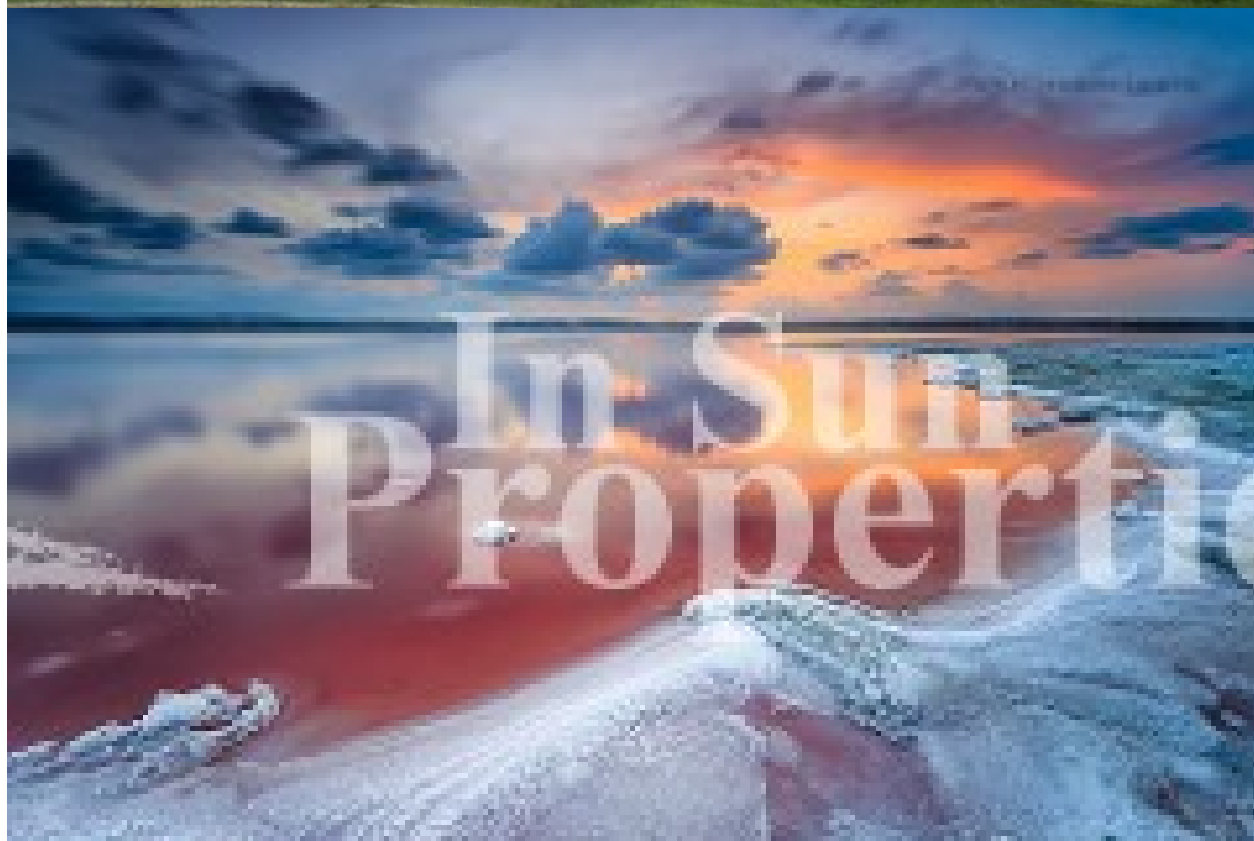












**"OUR EXPERIENCE IS YOUR GUARANTEE"**