



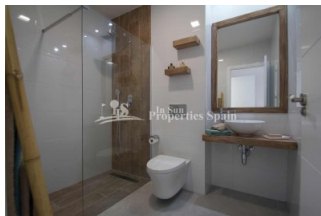
REF: # 4687

ORIHUELA COSTA (VILLAMARTIN GOLF )



#### INFO

PRIX:	182.000 €
TYPE:	Appartement
CITY:	Orihuela Costa (Villamartin Golf )
CHAMBRES:	3
Ba ENFANTS:	3
Built ( m2 ):	86
pas ( m2 ):	-
Terrasse ( m2 ):	19
A ENFANTS:	
de plante:	1
MESSAGE	-



#### DESCRIPTION

**KEY IN HAND.** This is a superb new and different development, which is situated in an elevated position next to VILLAMARTIN GOLF and with spectacular views over the Spanish inland and the Mediterranean Sea. At the same time close to 3 white sandy BEACHES and 4 GOLF COURSES, as well as to all kinds of services and amenities including Villamartin PLAZA and ZENIA BOULEVARD. This last remaining First Floor, 3 bedroom apartment is of 87 m2, with large 19m2 SOUTH facing balcony. All owners have access through 2 glass ELEVATORS to the large communal roof terrace with individual locked storage, Jacuzzi's, showers, pergola, BBQ's and 360 degree panoramic views over the beautiful interior landscape down to the Mediterranean. In addition, each apartment has its own 22m2 garage space with room for an average sized car, bicycles and lots of room left for storage. The fully gated residential area comes with an Infinity pool, an area for bicycle parking and a play ground for children. This is a development with CONCIERGE also.

#### CERTIFICAT ÉNERGÉTIQUE

Image type unknown

<https://iberiaproperty.fr/assets/images/viass/energy/energy-house>

STYLE	VIEW	DISTANCE :	POSITION
<ul style="list-style-type: none"><li>moderne</li><li>contemporain</li></ul>	<ul style="list-style-type: none"><li>Panoramico</li></ul>	Beach : 3 Km aéroport: 50 Km : 1 Km	Sur
MEUBLÉ	PARKING PAS. CAR	ÉTAGE	CUISINE
<ul style="list-style-type: none"><li>Vide</li></ul>	Garage no. Car : 1 : 1	<ul style="list-style-type: none"><li>tuiles</li><li>Stone</li></ul>	<ul style="list-style-type: none"><li>cuisine</li><li>cuisine équipée</li></ul>
JARD RIVIÈRE ET TERRASSES N	EXTRA		
<ul style="list-style-type: none"><li>Terrasse couverte</li><li>Playground</li><li>Paysage</li><li>barbecue / grill</li><li>Jard RIVER Communauté</li></ul>	<ul style="list-style-type: none"><li>cuve extérieure</li><li>intégré</li><li>Porte de sécurité</li><li>Double vitrage</li><li>stockage</li><li>Elevator</li><li>concierge</li></ul>		



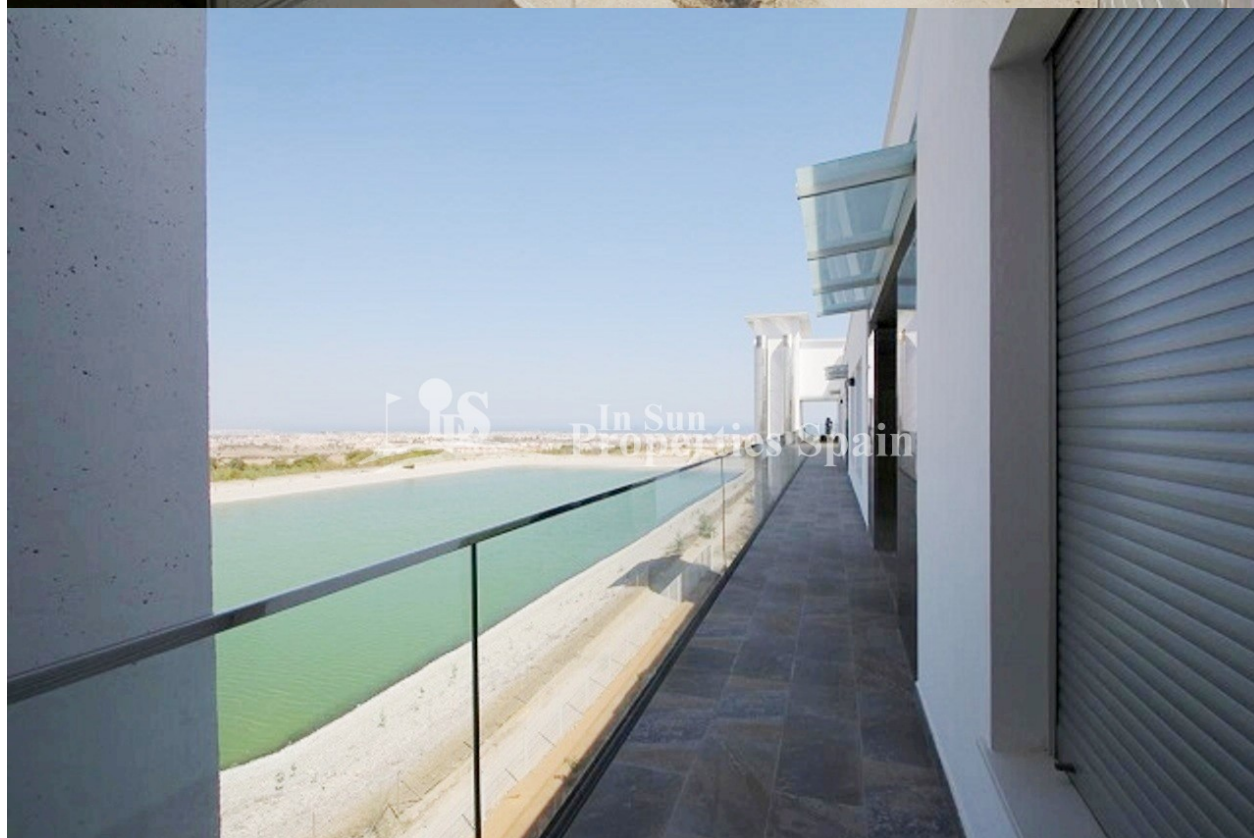




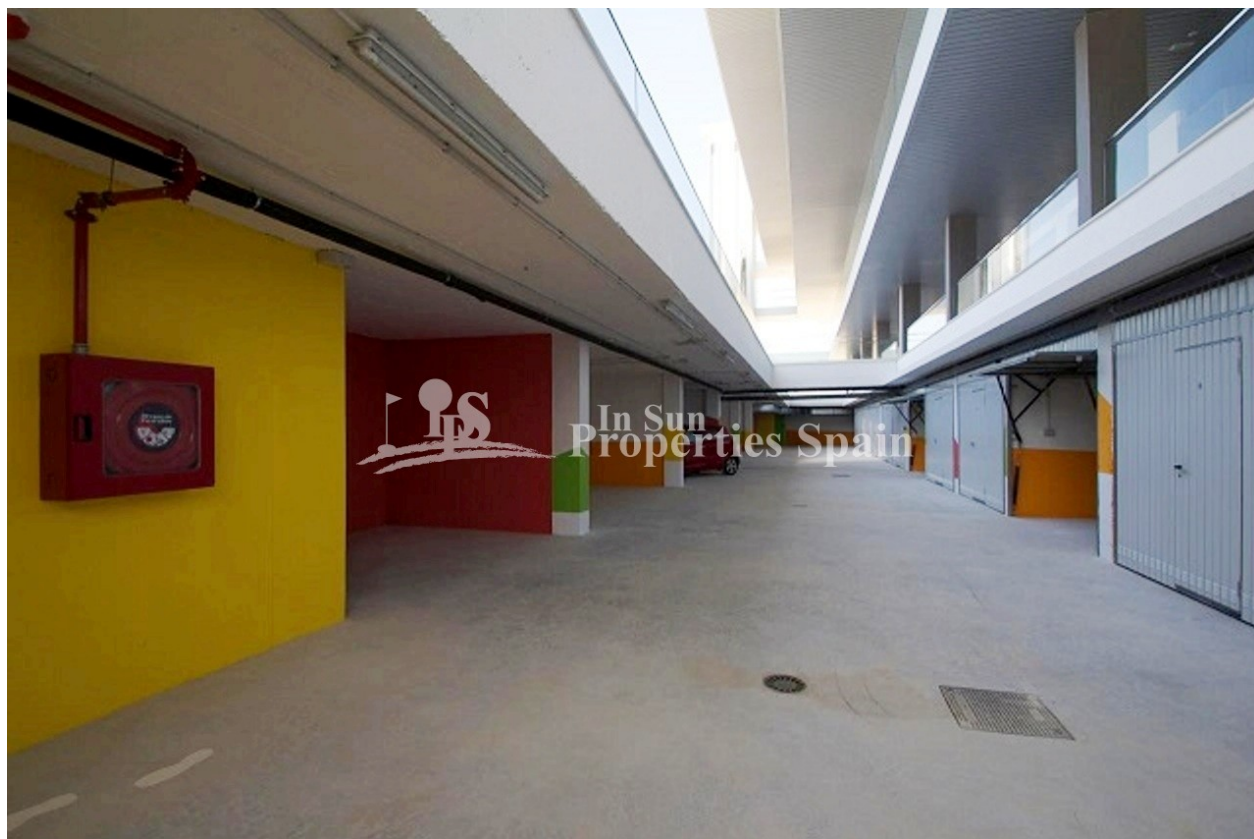




















**"OUR EXPERIENCE IS YOUR GUARANTEE"**