



REF: # 4424

ORIHUELA COSTA (VILLAMARTIN AREA)



INFO

PRIX:	174.000 €
TYPE:	Appartement
CITY:	Orihuela Costa (Villamartin Area)
CHAMBRES:	3
Ba ENFANTS:	2
Built (m2):	88
pas (m2):	-
Terrasse (m2):	15
A ENFANTS:	
de plante:	-
MESSAGE	-



DESCRIPTION

Modern Apartments in VILLAMARTIN. 1,2 & 3 bedroom with 1 and 2 bathrooms situated within a five minute walk of many local amenities & facilities, with a wide range of golf courses & beaches all within less than a 10 minute drive. The communal areas for this complex are lovely, consisting of a large communal swimming pool, plus children's pool & Jacuzzi, play park and several petanca lanes, not forgetting the well landscaped gardens. Prices include parking space in the basement, ACC fully installed and Kitchen with white goods as per the show house. 1 bed, 1 bath from €94,500, 2 bed from €186,900, 3 bed from €174,000. Las Filipinas makes a good base to explore the surrounding countryside and the beaches of the Costa Blanca. The surrounding towns and villages play host to a wide variety of indoor and outdoor markets – the Saturday MARKET at PLAYA FLAMENCA is particularly good. Las Filipinas is also just 5 minutes' drive from Villamartin Plaza and the new

Zenia Boulevard where you will be spoilt for choice for places to eat, drink and shop. Those who come to Spain for the golf will find Las Filipinas an ideal location – it's just 5 minutes to Villamartin, Campoamor and Las Ramblas golf courses; 15 minutes to the new golf course at La Finca and less than an hour to La Manga. 45 Minutes to ALICANTE international airport.

CERTIFICAT ÉNERGÉTIQUE

energy house

Image type unknown

<https://iberiaproerty.fr/assets/images/viass/energy/E>

STYLE <ul style="list-style-type: none">modernecontemporain	CLIMATISATION <ul style="list-style-type: none">mangerchambres	DISTANCE : <div>Beach : 3 Km</div> <div>aéroport: 50 Km</div> <div>: 1 Km</div>	POSITION <div>Oeste</div>
MEUBLÉ <ul style="list-style-type: none">Vide	PARKING PAS. CAR <div>Garage no. Car : 1</div> <div>: 1</div>	ÉTAGE <ul style="list-style-type: none">tuilesStone	CUISINE <ul style="list-style-type: none">cuisinecuisine équipéegranit
JARD RIVIÈRE ET TERRASSES N <ul style="list-style-type: none">Terrasse ouvertePalmPlaygroundPaysagemurs en pierreJard RIVER n privéeJard RIVER Communauté	EXTRA <ul style="list-style-type: none">intégréPorte de sécuritéDouble vitrage		

























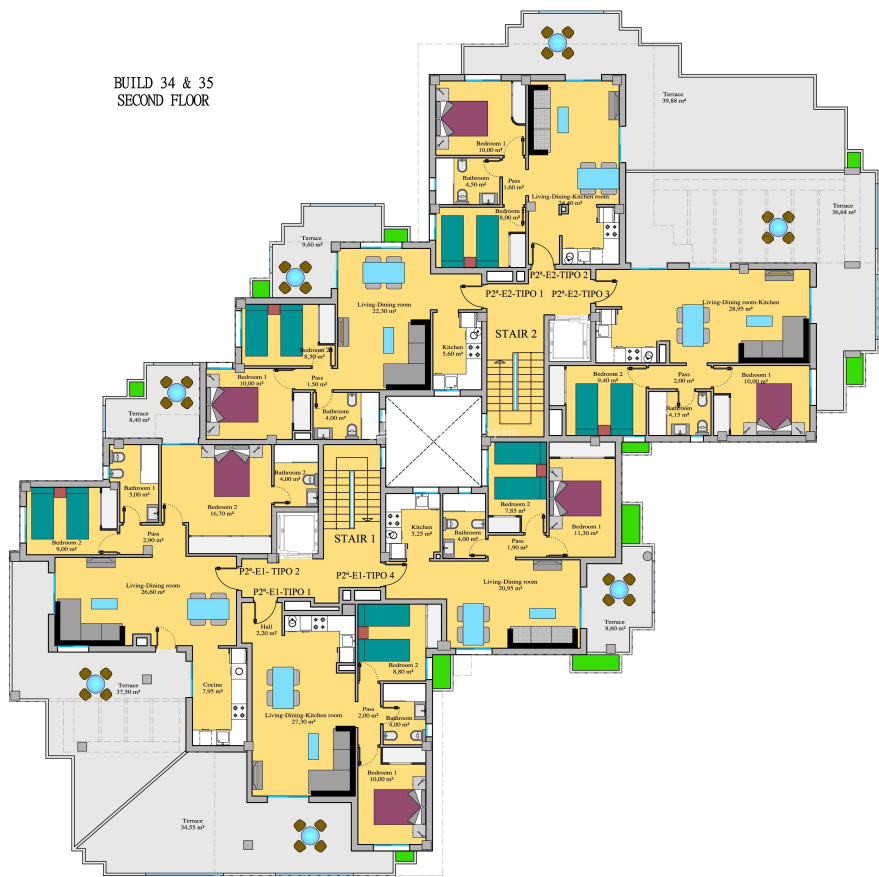
A world between golf courses for living



A beautiful Residential development in a quiet location with communal swimming pool and gardens, with sea views, excellent communications, close to the beach and between golf courses

Approximate artistic image susceptible of possible changes BAROCO PROYECTOS ,S.L

A world between golf courses for living



Approximate artistic image susceptible of possible changes BAROCO PROYECTOS ,S.L.

A world between golf courses for living



P2ª-E2-TIPO 1

APARTMENTS: P2ª-E2-TIPO 1
2 BEDROOMS
1 BATHROOM

SURFACES:

Apartment (Built)..... 62,96 m²
Terrace..... 9,60 m²



Approximate artistic image susceptible of possible changes BAROCO PROYECTOS ,S.L.





"OUR EXPERIENCE IS YOUR GUARANTEE"