



REF: # 13215

TORREVIEJA



INFO

PRIX: 175.000 €

TYPE: Appartement

CITY: Torrevieja

CHAMBRES: -

Ba ENFANTS: 1

Built (m2): 36

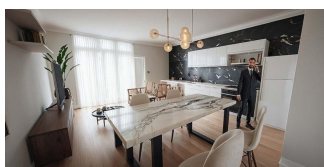
pas (m2): -

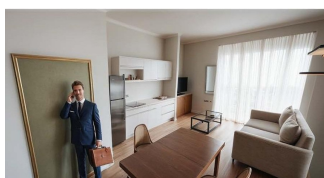
Terrasse (m2): 4

A ENFANTS: -

de plante: -

MESSAGE -





DESCRIPTION

Modern, newly built apartments in the centre of Torrevieja, just 200 m from the sea. Discover this exclusive boutique development of just 8 modern, newly built apartments, perfectly located in the heart of Torrevieja. Just 200 m from the sea in the heart of the city, these homes offer the ideal combination of seaside living and urban amenities. Contemporary design and smart layouts. Choose from 4 studios or 4 two-bedroom apartments with 1 bathroom. Each property is designed with a modern and functional layout that maximises natural light and comfort. High-quality finishes ensure durability and elegance, making these homes perfect for both year-round living and holiday getaways. Exclusive building amenities. Residents can relax in the communal rooftop solarium. Security entrance doors, fully installed air conditioning, underfloor heating in bathrooms and communal lift. Dynamic lifestyle in Torrevieja. Torrevieja is a lively coastal town famous for its cultural and leisure activities throughout the year. With over 300 days of sunshine a year, the area is ideal for enjoying the outdoors, beach days, water sports and evening strolls along the promenade. All essential amenities, including supermarkets, restaurants, cafés and entertainment venues, are within walking distance. Excellent location and connectivity. This central location offers quick access to all major attractions and amenities: Seafront promenade: 200m Playa del Cura beach: 550m Torrevieja marina: 500m Zenia Boulevard shopping centre: 8km Golf courses: 7-10km Alicante airport: 45km. Your Mediterranean home awaits. Whether you are looking for a holiday retreat, an investment property or a permanent residence, these modern, newly built apartments in Torrevieja offer you the perfect opportunity to enjoy the Mediterranean lifestyle in a privileged location. Contact us today to arrange a viewing and secure your place in this exclusive coastal development.

CERTIFICAT ÉNERGÉTIQUE



VIEW

- Panoramico

EXTRA

- Elevator







PLANTA PRIMERA Y SEGUNDA

SUPERFICIES VIVIENDA 1 Y 2 A		SUPERFICIES UTILES (m²)
Salón comedor, cocina		25,24
Paso		5,93
Baño		4,61
Dormitorio 1		18,25
Dormitorio 2		9,64
Terraza		4,86
TOTAL VIVIENDA PRIMERO Y SEGUNDO A		68,53

SUPERFICIES ESTUDIO 1 Y 2 B		SUPERFICIES UTILES (m²)
Salón comedor, cocina, dormitorio		32,47
Baño		4,47
TOTAL ESTUDIO PRIMERO Y SEGUNDO B		36,94

ZONAS COMUNES 1 Y 2		SUPERFICIES UTILES (m²)
Zona común		5,26
Escalera		2,28
TOTAL ZONAS COMUNES PRIMERO Y SEGUNDO		7,54

Planta Primera y segunda.
Estudio B y Vivienda A









"OUR EXPERIENCE IS YOUR GUARANTEE"