



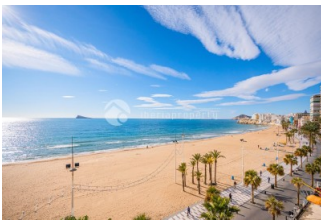
REF: # 13181

BENIDORM (PLAYA LEVANTE)



INFO

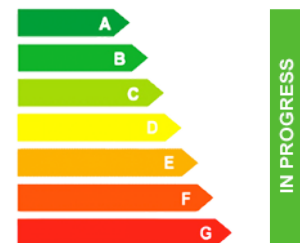
| | |
|------------------|--------------------------|
| PRIX: | 1.300.000 € |
| TYPE: | Appartement |
| CITY: | Benidorm (Playa Levante) |
| CHAMBRES: | 3 |
| Ba ENFANTS: | - |
| Built (m2): | 217 |
| pas (m2): | - |
| Terrasse (m2): | - |
| A ENFANTS: | 1987 |
| de plante: | 4 |
| MESSAGE | - |



DESCRIPTION

In one of the most prestigious buildings in Benidorm lies this exclusive luxury home, completely renovated with high-quality finishes. Its location is unbeatable, right on the beachfront of Playa de Levante, just steps from the city center and surrounded by all services. The property stands out for its spaciousness, brightness, and spectacular panoramic views of the sea, the bay, and Benidorm Island, giving the sensation of sailing through the Mediterranean. It features a very comfortable layout with a large living room with several areas, a fully equipped kitchen with office space, three bedrooms, and three bathrooms, two of which are en suite, as well as different spaces designed for comfort and privacy. Among its highlights are natural wood floors, integral air conditioning, automated blinds and awnings, custom carpentry, and an interior design that combines modernity and warmth. The property includes a surface parking space, with the possibility of acquiring two closed underground garage spaces as an option. A unique opportunity to enjoy one of the most exclusive and best-located homes in Benidorm.

CERTIFICAT ÉNERGÉTIQUE



| STYLE | VIEW | CLIMATISATION | DISTANCE : |
|--|--|---|--|
| <ul style="list-style-type: none">• moderne• Méditerranée | <ul style="list-style-type: none">• Panoramico• Ocean | <ul style="list-style-type: none">• Central• manger• Cuisine• chambres | Beach : 50 m aéroport: 30 Km : 50 m |
| POSITION | PARKING PAS. CAR | ÉTAGE | CUISINE |
| Est sud | Garage no. Car : 3 | <ul style="list-style-type: none">• bois• Stone | <ul style="list-style-type: none">• cuisine fermée• cuisine équipée |
| CHAUFFAGE | EXTRA | | |
| <ul style="list-style-type: none">• chauffage électrique | <ul style="list-style-type: none">• jacuzzi intérieur• intégré• Porte de sécurité• Double vitrage• Satellite TV• stockage• Laundry• Elevator• Internet• concierge | | |







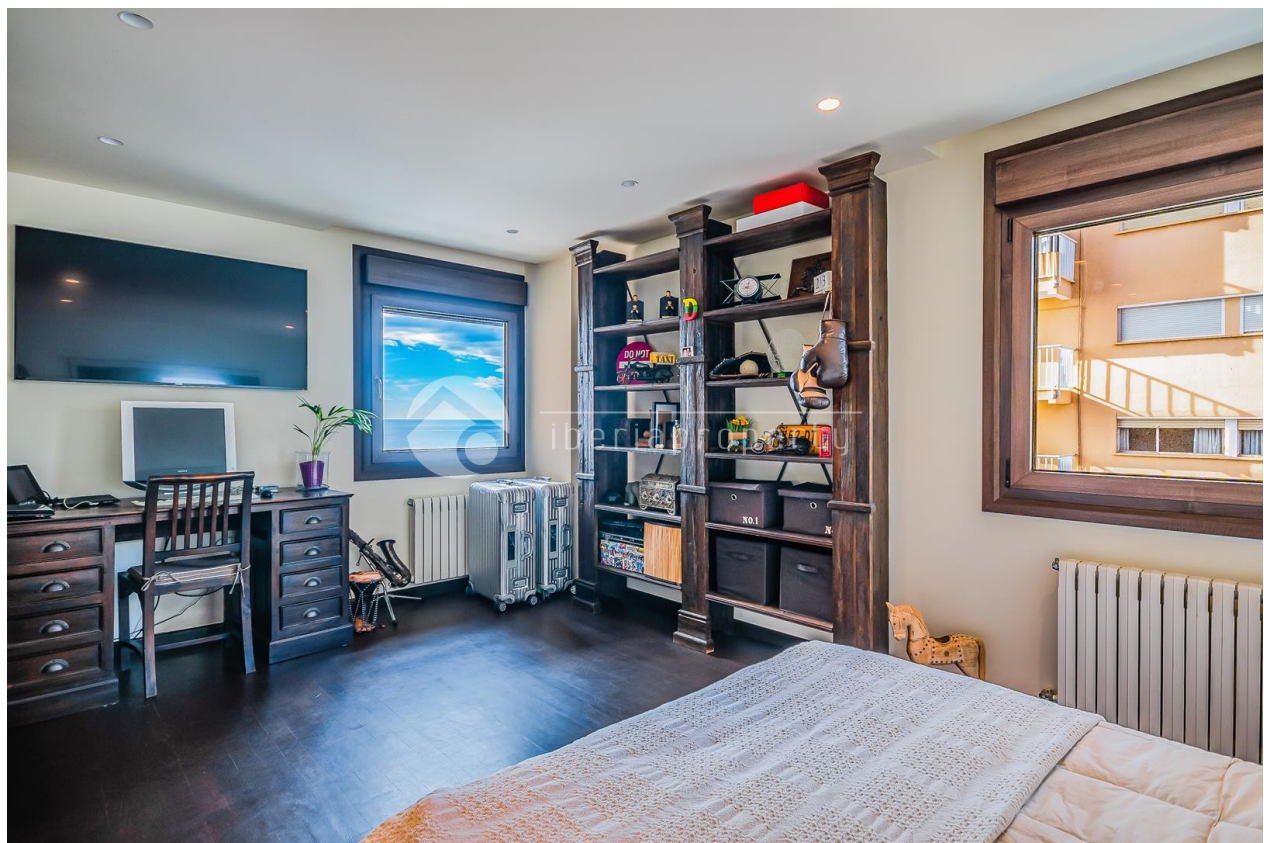














"OUR EXPERIENCE IS YOUR GUARANTEE"