



REF: # 13117

ALTEA (CAP NEGRET)



INFO

| | |
|-------------------------|--------------------|
| PRIX: | 365.000 € |
| TYPE: | Appartement |
| CITY: | Altea (Cap Negret) |
| CHAMBRES: | 2 |
| Ba ENFANTS: | 1 |
| Built (m2): | 60 |
| pas (m2): | - |
| Terrasse (m2): | - |
| A ENFANTS: | 1986 |
| de plante: | - |
| MESSAGE | - |



DESCRIPTION

This charming apartment is located on the seafront, just a 5-minute walk from the town center of Altea and all essential services. Situated on a bright corner of the ground floor, it enjoys abundant natural light throughout the day. The property features a spacious living-dining area with direct access to a glazed terrace offering open sea views—perfect for enjoying the sea breeze year-round. The recently renovated open-plan kitchen integrates seamlessly with the main living space. There are two double bedrooms, one of which boasts beautiful sea views, and a full bathroom. Air conditioning is installed in both the living room and bedrooms for added comfort. An ample storage room is included, ideal for storing bicycles, sports equipment, or even a quad bike. The well-maintained community offers a lovely garden with outdoor dining space and an impressive communal rooftop terrace with a chill-out area, providing panoramic 360° views of the Mediterranean Sea and the nearby mountains. This well-distributed, spacious, and bright property is perfect as a primary residence, holiday home, or a high-demand investment opportunity. Apartment Layout: Bright living-dining room with

direct access to the glazed terrace Renovated open-plan kitchen Glazed terrace with sea views 2 double bedrooms (master with sea views) 1 full bathroom Air conditioning in living room and bedrooms Spacious storage room included Communal garden/terrace with outdoor dining area Communal rooftop terrace with seating area and 360° views."

CERTIFICAT ÉNERGÉTIQUE

energy house

Image type unknown

<https://iberiaproperty.fr/assets/images/viass/energy/C>

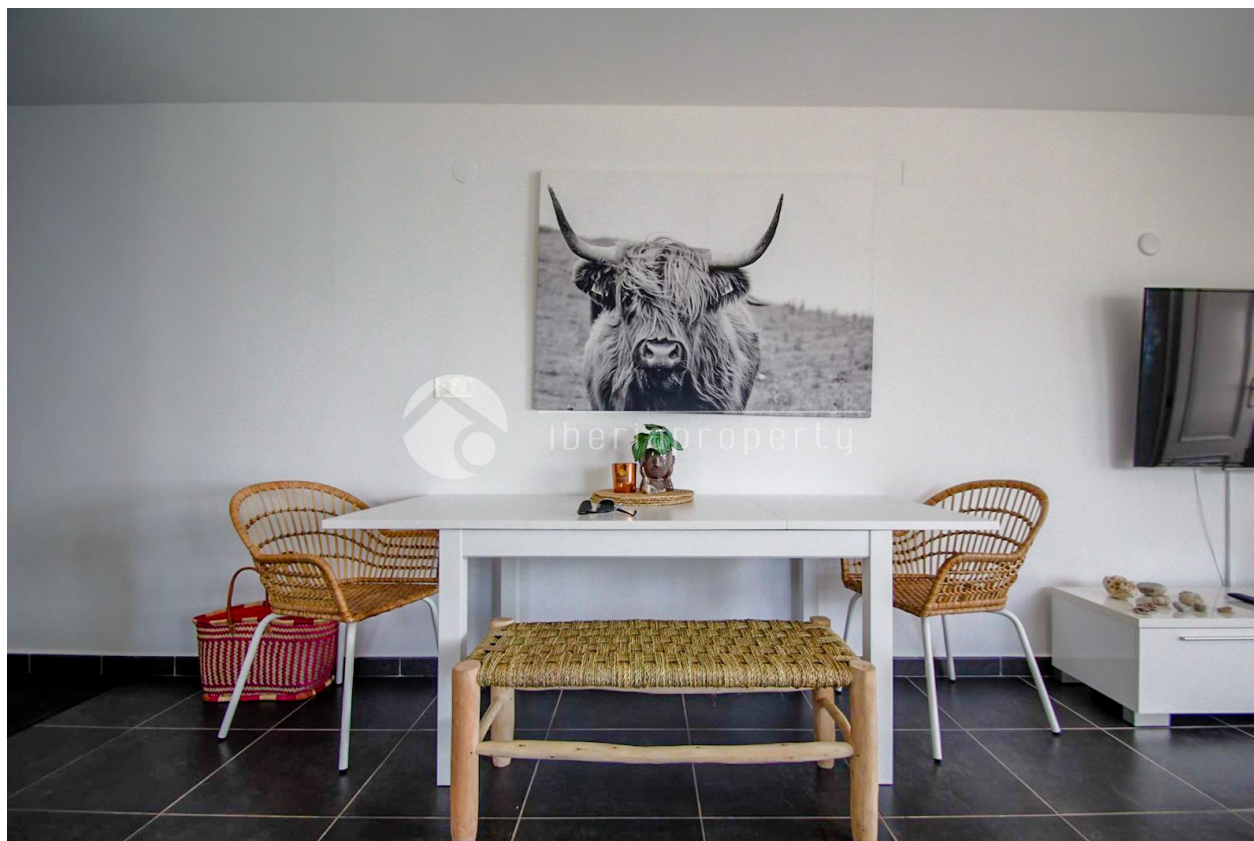
| | | | |
|--|--|---|---|
| STYLE | CLIMATISATION | DISTANCE : | POSITION |
| <ul style="list-style-type: none">contemporainMéditerranée | <ul style="list-style-type: none">Central | Beach : 50 m aéroport: 40 Km : 1 Km | Est sud |
| MEUBLÉ | PARKING PAS. CAR | ÉTAGE | CUISINE |
| <ul style="list-style-type: none">meublé | Garage no. Car : 1 | <ul style="list-style-type: none">Stone | <ul style="list-style-type: none">cuisinecuisine équipée |
| JARD RIVIÈRE ET TERRASSES N | CHAUFFAGE | EXTRA | |
| <ul style="list-style-type: none">Terrasse couverteFeux extérieursPalmPlaygroundmurs en pierrecuisine d'étéJard RIVER Communauté | <ul style="list-style-type: none">chauffage électrique | <ul style="list-style-type: none">Porte de sécuritéSatellite TVInternet | |







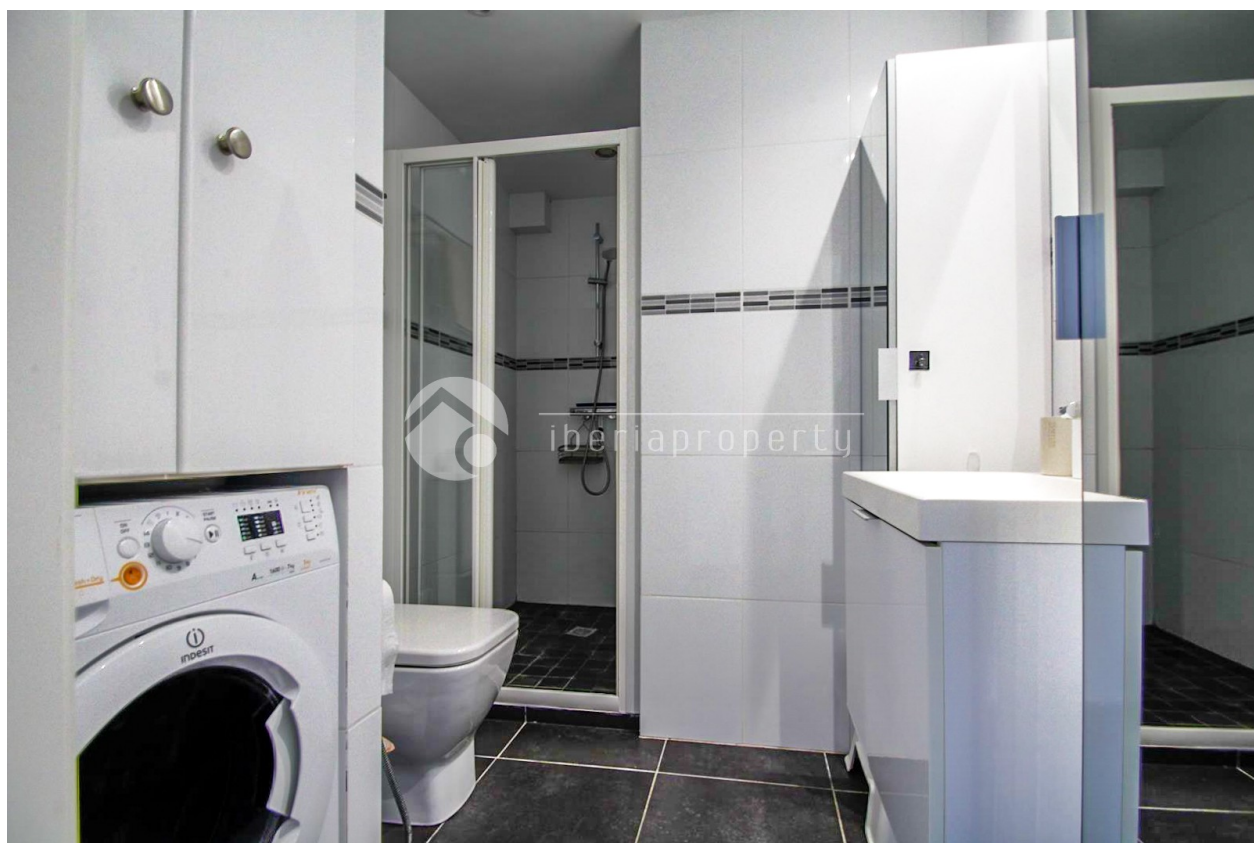
















"OUR EXPERIENCE IS YOUR GUARANTEE"