



REF: # 13106

PILAR DE LA HORADADA



#### INFO

**PRIX:** 795.000 €

**TYPE:** Villa

**CITY:** Pilar De La Horadada

**CHAMBRES:** 3

**Ba ENFANTS:** 3

**Built ( m2 ):** 135

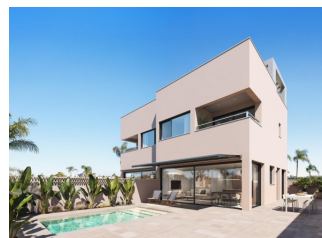
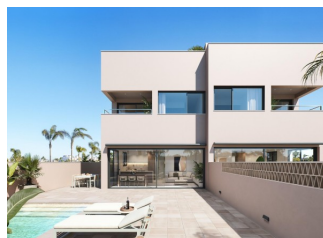
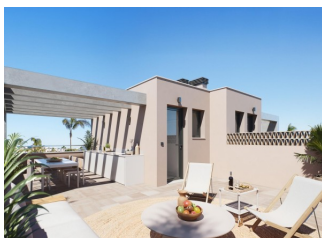
**pas ( m2 ):** 170

**Terrasse ( m2 ):** 45

**A ENFANTS:** -

**de plante:** -

**MESSAGE** -



#### DESCRIPTION

Exclusive residential development of 2 luxury semi-detached villas with sea views on Las Higuercas beach, Torre de la Horadada. Discover these impressive semi-detached homes located in Torre de la Horadada, on the second line of Las Higuercas beach. With a modern and elegant design, spacious rooms and top quality materials, these properties have been designed to offer maximum comfort and exclusivity. With a 5x3m private pool, parking on the plot and a 40 m2 solarium: a spectacular open space ideal for a chill-out area, barbecue or enjoying the sun and unobstructed views. Each villa has independent access from the surrounding streets, as there are no adjacent buildings. With quiet streets and large green areas around the residential complex, these properties are ideal for young families. The villas have a plot of 170 m2 and a built area of 135 m2. The villas are built with three bedrooms and three bathrooms (two of them en-suite) on two floors. The kitchen is fully fitted with the possibility of customisation and includes appliances. Following an open-plan concept, the dining room is surrounded by large windows, providing a pleasant source of natural light, with direct access to the pool

and gardens finished with lighting, irrigation and local vegetation. The selected finishes, with top quality materials, the customised luxury design and maximum comfort, together with ducted air conditioning and heating included in all areas, make the villa enjoyable in the hot summers and also in the mild winters, making it possible to live here all year round. Located in one of the best areas of the Costa Blanca, these properties offer a peaceful environment, yet with all amenities nearby: restaurants, supermarkets, golf and shopping centres. The two semi-detached villas are located on the second line of the beach in Las Higuericas, in Torre de la Horadada, a paradise in every way, where you can enjoy the seafront, the immensity of the Mediterranean Sea, the promenade, refreshing swims in the sea, water sports, sailing, surfing, snorkelling and only 8 km from Lo Romero Golf, one of the 21 golf courses on the Costa Blanca. It is 5 minutes from the marina of La Torre de la Horadada and 10 minutes from the marinas of San Pedro del Pinatar, and the best restaurants where you can sample the finest Mediterranean cuisine. Not to mention the proximity of the AP7 motorway, which connects our residential area with two airports with international destinations, Corvera, 44 km away, and Altet, Alicante, 75 km away. The nearest town to the development is Pilar de la Horadada, 1 km away, a quiet village with all kinds of services, schools, health centres, police, pharmacies, etc. There are also two shopping areas nearby, the Dos Mares Shopping Centre in San Javier, 5 minutes away by car, and La Zenia Boulevard in Orihuela Costa, 15 minutes away by car.



VIEW

- Panoramico
- Ocean

JARD RIVIÈRE ET  
TERRASSES N

- clôtures
- Jard RIVER n privée



















## VIVIENDAS Nº1.1 Y Nº 1.2

### SUPERFICIES CONTRUIDAS:

PLANTA BAJA: 61.15 x 2 = 122.30 m<sup>2</sup>

PLANTA PRIMERA: 58.20 x 2 = 116.40 m<sup>2</sup>

PLANTA SOLARIUM: 15.65 x 2 = 31.30 m<sup>2</sup>

TOTAL CONSTRUIDA: 135.00 x 2 = 270.00 m<sup>2</sup>

SOLARIUM: 40.00 m<sup>2</sup>

TAMAÑO PISCINA: 5.00 x 3.00

SUPERFICIE PARCELA: 170.50 X 2 = 341.00 m<sup>2</sup>

La información contenida en este documento puede estar sujeta a posibles modificaciones, por exigencias técnicas, jurídicas o comerciales. El mobiliario reflejado es meramente orientativo.

## VIVIENDAS Nº1.1 Y Nº 1.2

### SUPERFICIES CONTRUIDAS:

PLANTA BAJA: 61.15 x 2 = 122.30 m<sup>2</sup>  
 PLANTA PRIMERA: 58.20 x 2 = 116.40 m<sup>2</sup>  
 PLANTA SOLARIUM: 15.65 x 2 = 31.30 m<sup>2</sup>

TOTAL CONSTRUIDA: 135.00 x 2 = 270.00 m<sup>2</sup>

SOLARIUM: 40.00 m<sup>2</sup>  
 TAMAÑO PISCINA: 5.00 x 3.00

SUPERFICIE PARCELA: 170.50 X 2 =341.00 m<sup>2</sup>



PLANTA PRIMERA

La información contenida en este documento puede estar sujeta a posibles modificaciones, por exigencias técnicas, jurídicas o comerciales. El mobiliario reflejado es meramente orientativo.

## VIVIENDAS Nº1.1 Y Nº 1.2

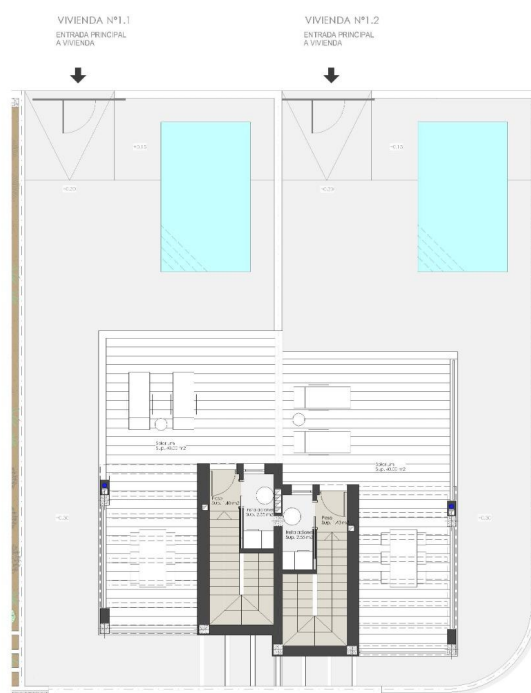
### SUPERFICIES CONTRUIDAS:

PLANTA BAJA: 61.15 x 2 = 122.30 m<sup>2</sup>  
 PLANTA PRIMERA: 58.20 x 2 = 116.40 m<sup>2</sup>  
 PLANTA SOLARIUM: 15.65 x 2 = 31.30 m<sup>2</sup>

TOTAL CONSTRUIDA: 135.00 x 2 = 270.00 m<sup>2</sup>

SOLARIUM: 40.00 m<sup>2</sup>  
 TAMAÑO PISCINA: 5.00 x 3.00

SUPERFICIE PARCELA: 170.50 X 2 =341.00 m<sup>2</sup>



PLANTA SOLARIUM

La información contenida en este documento puede estar sujeta a posibles modificaciones, por exigencias técnicas, jurídicas o comerciales. El mobiliario reflejado es meramente orientativo.

**"OUR EXPERIENCE IS YOUR GUARANTEE"**