



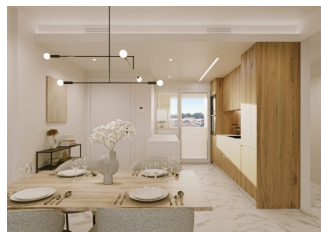
REF: # 13104

TORREVIEJA



INFO

PRIX:	314.000 €
TYPE:	Appartement
CITY:	Torrevieja
CHAMBRES:	2
Ba ENFANTS:	2
Built (m2):	71
pas (m2):	-
Terrasse (m2):	16
A ENFANTS:	-
de plante:	-
MESSAGE	-



DESCRIPTION

New Build Apartments in Punta Prima Just 250 Metres from the Sea
Exclusive residential complex with premium communal areas on the Costa Blanca We present a modern new-build residential complex comprising 250 apartments in Punta Prima, one of the most sought-after areas of Torrevieja. Located just 250 metres from the sea, this project offers a unique opportunity to live close to the beach with all the amenities of a private resort. 2 and 3-bedroom homes with large terraces
The apartments are available in 2 or 3 bedroom configurations with 2 bathrooms, all with an open-plan kitchen integrated into the living room, maximising the feeling of space and natural light. The ground floor properties have private gardens, the middle floors offer large terraces, and the penthouses have solariums to enjoy the sun all year round. Each unit includes a parking space and storage room, ensuring convenience and additional storage space. Communal areas for the whole family
The residential complex has been designed to offer an exceptional quality of life. Its communal areas include three swimming pools (one of which is heated), a gym with a jacuzzi, a paddle tennis court, a petanque court and landscaped gardens. The little ones have their own children's pool

and a play area designed for their safe entertainment. High-quality finishes and energy efficiency PVC exterior carpentry with thermal break Double glazing and motorised blinds in bedrooms Fitted kitchen with appliances included Bathrooms equipped with shower screen, cabinet, mirror and underfloor heating Air conditioning system using aerothermal heat pump Security entrance door Bicycle parking Strategic location with nearby amenities Punta Prima is located just 5 km from the centre of Torrevieja and has excellent health, educational and transport infrastructure. Alicante International Airport is only 45 km away. Punta Prima beach: 250 m Villamartín Golf Course: 7 km La Zenia Boulevard Shopping Centre: 4 km Torrevieja University Hospital: 3 km Torrevieja Marina: 6 km An ideal investment for a home or holiday Enjoy a Mediterranean setting with year-round amenities, quality beaches and excellent transport links. Don't miss the opportunity to purchase your new home in one of the most sought-after locations on the Costa Blanca. Contact us today for more information or to arrange a viewing.



VIEW

- Panoramico

PARKING PAS. CAR

: 1

ZONES

- Gymnasio

JARD RIVIÈRE ET
TERRASSES N

- Playground
- clôtures

EXTRA

- cuve extérieure
- Elevator















BLUE / AZUL / NIEBIESKI

VIVIENDA TIPO
/ HOUSE TYPE

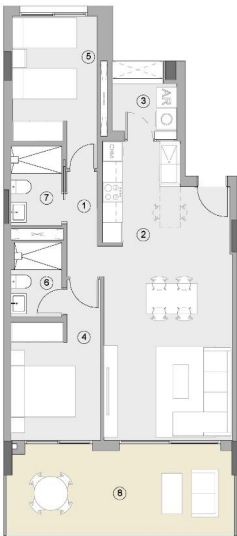
1

ES 1.3.4.4-7

PLANTA 1-8

SEMS 1.3.4.4-7

FLOOR 1-8



SUPERFICIES ÚTILES / USABLE AREA

SUPERFICIES ÚTILES INTERIORES / USABLE INTERIOR AREA	
1 PASO / HALLWAY	2,93 m²
2 ESTAR-COM. COCINA / KITCHEN-LIVING	31,53 m²
3 TENEDERO (100%) / UTILITY ROOM	2,66 m²
4 DORMITORIO 01 / BEDROOM 01	10,47 m²
5 DORMITORIO 02 / BEDROOM 02	9,92 m²
6 BAÑO 01 / BATHROOM 01	3,22 m²
7 BAÑO 02 / BATHROOM 02	3,53 m²
64,26 m²	

SUPERFICIES ÚTILES EXTERIORES / USABLE EXTERIOR AREA

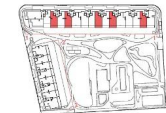
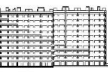
8 TERRAZA 01 (100%) / TERRACE 01	16,37 m²
16,37 m²	

SUP. ÚTIL TOTAL / TOTAL USABLE AREA

80,63 m²

SUPERFICIES CONSTRUIDAS / BUILT AREA

SUP. CONST. INTERIOR / INTERIOR BUILT AREA	71,39 m²
SUP. CONST. EXT (50%) / EXT. BUILT AREA	9,96 m²
SUP. CONST. Z/C / BUILT AREA SHARED AREAS	10,17 m²
SUP. CONS. TOTAL / TOTAL BUILT AREA	91,71 m²



mayo 2025

0 1 2 3 4 5m

Las superficies indicadas lo son con carácter meramente informativo, no contractual, y pueden sufrir ligeros variaciones por necesidades técnicas del proceso de construcción.

The indicated areas are for information purposes only, not contractual, and may vary slightly by technical requirements of the construction process.





"OUR EXPERIENCE IS YOUR GUARANTEE"