



REF: # 12837

TORRE PACHECO (SANTA ROSALIA LAKE AND LIFE RESORT)



INFO

PRIX:	282.000 €
TYPE:	Appartement
CITY:	Torre Pacheco (Santa Rosalia Lake and Life Resort)
CHAMBRES:	2
Ba ENFANTS:	2
Built (m2):	77
pas (m2):	-
Terrasse (m2):	17
A ENFANTS:	-
de plante:	-
MESSAGE	-



DESCRIPTION

Exclusive New Build Apartments in Private Resort 4km from the beach A Luxury Residential Complex with 24 Hour Security Located in a prestigious private resort in the province of Murcia, this new residential complex offers 24 flats of modern design, surrounded by green areas and with access to an impressive range of first class facilities and services. The resort has 24-hour security, restricted access and ample recreational spaces, making it an ideal option for those seeking exclusivity, tranquillity and a privileged natural environment. Modern Apartments with Different Layout Options The properties are designed with high quality finishes and a layout optimised for comfort: 2 and 3 bedroom flats with 2 complete bathrooms. American kitchen integrated in the living room, with modern and functional design. Large terraces overlooking the green areas. Ground floor apartments with private garden, middle floors with large terraces and penthouses with private

solarium. Parking space and storage room included. Top quality fittings and fixtures and fittings The flats have a selection of state-of-the-art materials and technology: Electric blinds in bedrooms. Highly efficient aerothermal system for domestic hot water. Fully installed ducted air conditioning (hot-cold). Underfloor heating in bathrooms. Low consumption LED lighting. Thermo-lacquered aluminium carpentry with thermal bridge break. The urbanisation has a communal swimming pool, children's play area and paddle tennis court. Resort services The resort where this development is located is designed around an impressive green area of 126,000 m², which includes: Mini-golf course. Tennis courts. Walking and cycling trails. Children's playgrounds and leisure areas. Clubhouse with restaurant and social areas. Dog parks. A spectacular 17,000 m² artificial lake with crystal clear waters, white sandy beaches and several beach bars. Strategic Location Close to Beaches and Amenities This exclusive complex is in a privileged location, with easy access to the main points of interest in the region: Los Alcazares Beach - Less than 4 km away. Golf courses nearby - Several options within minutes. Cartagena - Less than 15 minutes drive. Murcia Airport - 22 km away (approximately 20 minutes drive). Invest in a Unique Lifestyle in the Murcia Region This complex offers an unbeatable combination of quality, location and amenities, ideal as a permanent residence, holiday home or investment property. Contact us today for more information or to arrange a viewing.



VIEW

- Panoramico

PARKING PAS. CAR

: 1

**JARD RIVIÈRE ET
TERRASSES N**

- arbres fruitiers
- Playground
- clôtures

EXTRA

- Elevator

PROPERTY GALLERY







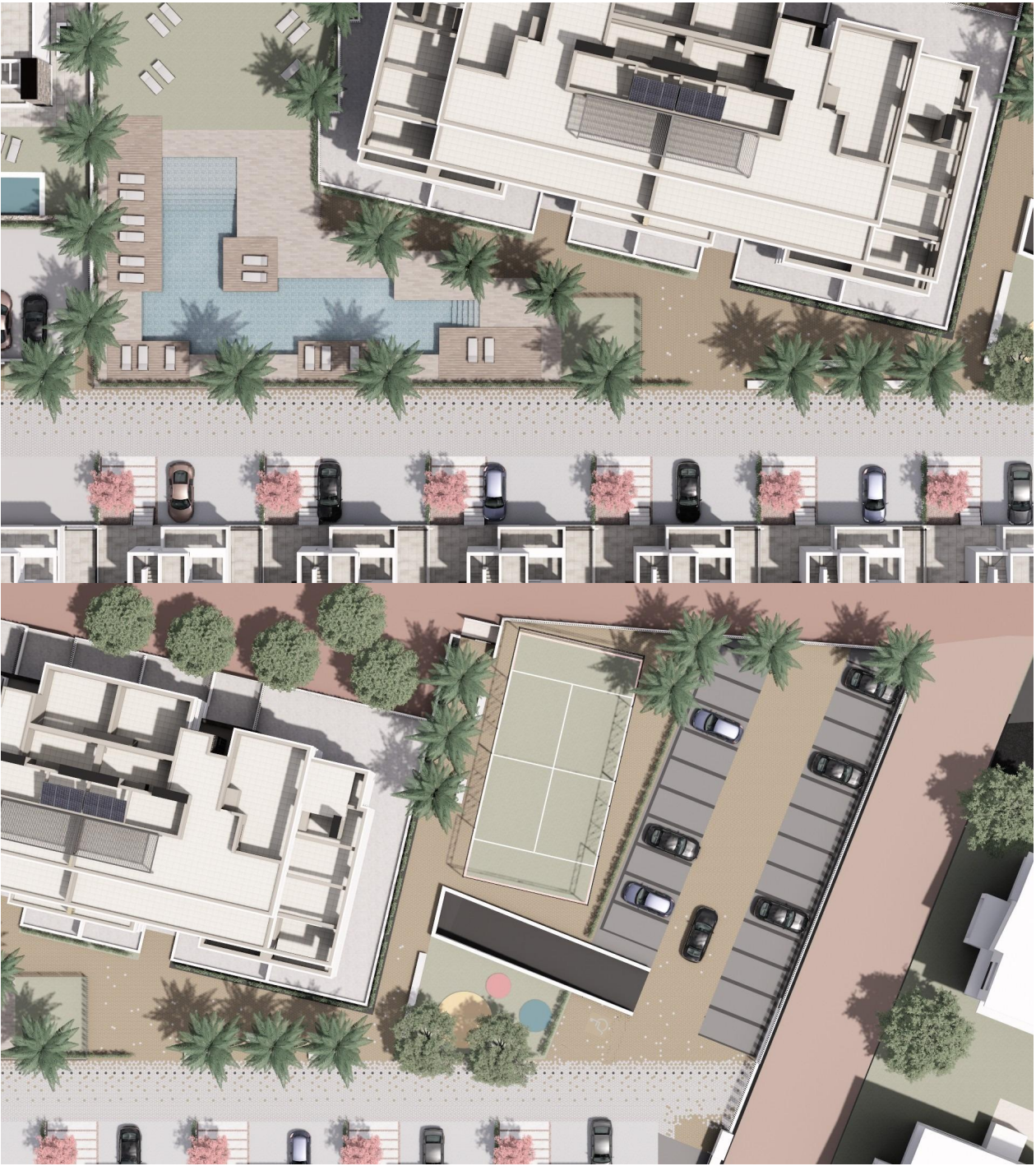




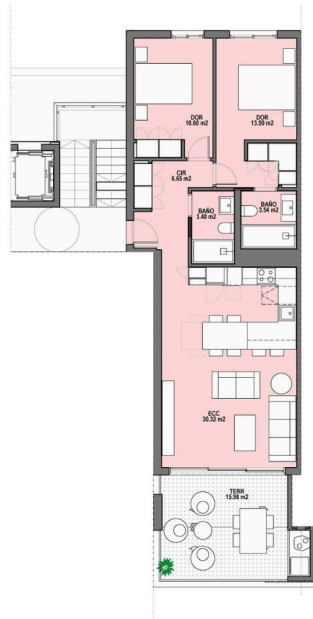












SUPERFICIES

APARTAMENTO	Vivienda nº	9
	Tipo	1C
	Bloque	1
Sup. construida		
Interior vivienda		77.77 m²
Zonas comunes		8.45 m²
TOTAL INTERIOR		86.22 m²
Terraza		
TOTAL EXTERIOR		15.98 m²
SUPERFICIE TOTAL		102.20 m²

Documento e imágenes de carácter informativo, no contractual. Puede sufrir variaciones por razones técnicas, legales o comerciales. El mobiliario y electrodomésticos son meramente decorativos y no incluidos.

This plan and artistic impressions is for illustration purposes only and may be modified for technical, legal or commercial reasons. The furniture and appliances shown are purely decorative and are not included.

"OUR EXPERIENCE IS YOUR GUARANTEE"