



REF: # 12772

PILAR DE LA HORADADA



INFO

PRIX:	326.900 €
TYPE:	Appartement
CITY:	Pilar De La Horadada
CHAMBRES:	2
Ba ENFANTS:	2
Built (m2):	103
pas (m2):	-
Terrasse (m2):	58
A ENFANTS:	-
de plante:	-
MESSAGE	-



DESCRIPTION

New build homes in Pilar de la Horadada with private pool Modern homes close to the beach Discover this exclusive new build residential complex in Pilar de la Horadada, which offers bungalows just 2.5 km from the beach. Designed for comfort and style, these homes are an excellent opportunity to enjoy life on the Costa Blanca. Spacious and stylish homes This development offers 2 or 3 bedroom homes with 2 bathrooms and private parking. Choose from: Ground floor bungalows with private garden. Top floor bungalows with open terrace. 1 Townhouse with 3 bedrooms and corner plot. Each property is built with high quality materials and modern finishes, including: All properties have private swimming pool. Pre-installation of ducted air conditioning. Aluminium exterior carpentry with thermal break and double glazing. Security entrance door for peace of mind. Aerothermal system for efficient hot water production. Fitted wardrobes in bedrooms. Privileged location in Pilar de la Horadada Pilar de la Horadada is a charming Spanish town in the southernmost part of the Costa Blanca. It offers a

vibrant main street with numerous shops, supermarkets, restaurants and picturesque squares. The stunning beaches of Torre de la Horadada and Mil Palmeras are only 5 minutes away, with fine golden sand a picturesque promenade. The town also offers well-developed cycle paths and hiking trails, as well as a variety of sporting activities. Convenient access to key destinations Lo Romero Golf Course - 5 km (10 minutes drive). Corvera Airport (Murcia) - 40 km (40 minutes drive). Alicante Airport - 55 km (55 minutes drive). Shopping Centres (La Zenia Boulevard) - 15 km (15 minutes by car). Torre de la Horadada Marina - 3 km (5 minutes drive). Secure your dream home today Don't miss out on this fantastic opportunity to own a brand new home in a prime location. Contact us today for more information and to arrange a viewing.

CERTIFICAT ÉNERGÉTIQUE



VIEW

- Panoramico

CLIMATISATION

- Central

PARKING PAS. CAR

: 1

JARD RIVIÈRE ET TERRASSES N

- clôtures





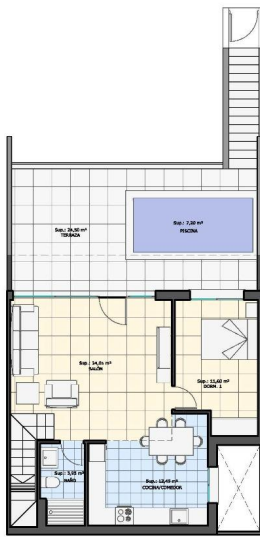




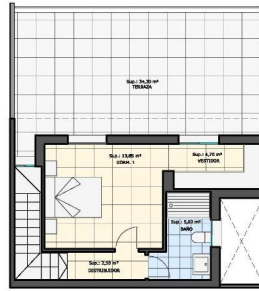






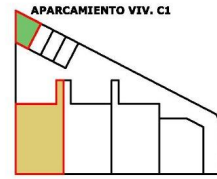


PLANTA BAJA



PLANTA PRIMERA

ESQUEMA PLANTA PRIMERA



VIVIENDA C1

Vivienda tipo C.1	
Planta Baja	
Salón-comedor	24,05 m ²
Cocina	12,45 m ²
Cuarto de baño 1	3,95 m ²
Dormitorio 1	11,60 m ²
Planta Primera	
Distribuidor	2,50 m ²
Dormitorio 2	13,85 m ²
Vestidor	4,70 m ²
Cuarto de baño 2	5,00 m ²
Superficies útil Interior	78,10 m ²
Vivienda tipo A	
Terraza 1	24,50 m ²
Piscina	7,20 m ²
Terraza 2	34,20 m ²
Superficies útil exterior	66,90 m ²
Superficie construida	
Planta baja	66,11 m ²
Planta Primera	39,28 m ²
TOTAL	105,39 m ²



"OUR EXPERIENCE IS YOUR GUARANTEE"