



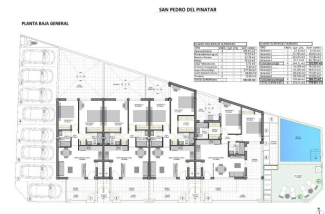
REF: # 12746

SAN PEDRO DEL PINATAR



INFO

<b>PRIX:</b>	269.950 €
<b>TYPE:</b>	Appartement
<b>CITY:</b>	San Pedro Del Pinatar
<b>CHAMBRES:</b>	2
<b>Ba ENFANTS:</b>	2
<b>Built ( m2 ):</b>	68
<b>pas ( m2 ):</b>	-
<b>Terrasse ( m2 ):</b>	62
<b>A ENFANTS:</b>	-
<b>de plante:</b>	-
<b>MESSAGE</b>	-

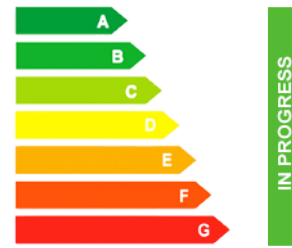


DESCRIPTION

New Build Bungalows in San Pedro del Pinatar – Prime Location Just 500m from the Beach Exclusive Boutique-Style Homes Near the Coast Discover these elegant new construction bungalows in the heart of San Pedro del Pinatar, just 500 meters from the stunning beaches of the Mar Menor. This boutique development includes only eight signature homes, combining modern design, comfort, and a tranquil coastal lifestyle. Available Models to Suit Your Lifestyle Garden/Ground Floor Model: Features a front terrace and a spacious rear patio, perfect for outdoor living. Penthouse Loft Model: Includes a private rooftop solarium and a front terrace, offering open views and an abundance of sunlight. Garden/Ground Floor Model Details Step into a bright living space that seamlessly connects to the dining area and a fully fitted kitchen. Large sliding glass doors let in natural light, creating an open and inviting ambiance. The layout includes two spacious bedrooms, with the master bedroom boasting an en-suite bathroom, as well as a modern family bathroom. Penthouse Model Highlights Access the penthouse via a private staircase leading to a large terrace. Inside, an open-plan lounge

and dining area blend with a fully fitted kitchen. Two bedrooms are included, with the master bedroom offering an en-suite. A private rooftop solarium, accessible from the kitchen, provides an ideal spot for relaxation or entertaining. Additional ground-floor storage ensures convenience. Key Features and Amenities Internal and external LED lighting. Fully fitted kitchen with induction hob, oven, dishwasher, and fridge/freezer. Air conditioning installed. Designated parking space. Landscaped communal garden with a swimming pool for residents. San Pedro del Pinatar: Coastal Charm and Convenience Located on the beautiful Mar Menor and Mediterranean coastlines, San Pedro del Pinatar is a haven for watersports, sailing enthusiasts, and beach lovers. The nearby Lo Pagán area offers natural mud baths, calm waters, and year-round amenities, including shops, restaurants, and leisure facilities. Distances to Key Points of Interest: Dos Mares Shopping Center: 5 km Murcia/Corvera Airport: 30 km Alicante Airport: 75 km Local golf courses: 10–20 km Marina and sailing clubs: 2 km Reserve Your Dream Home Today With completion scheduled for late 2025, now is the perfect time to secure your new home in San Pedro del Pinatar. Don't miss this opportunity to enjoy a blend of modern elegance and coastal tranquility. Contact us today to learn more or arrange a visit!

## CERTIFICAT ÉNERGÉTIQUE



## VIEW

- Panoramico

## CLIMATISATION

- Central

## JARD RIVIÈRE ET TERRASSES N

- clôtures

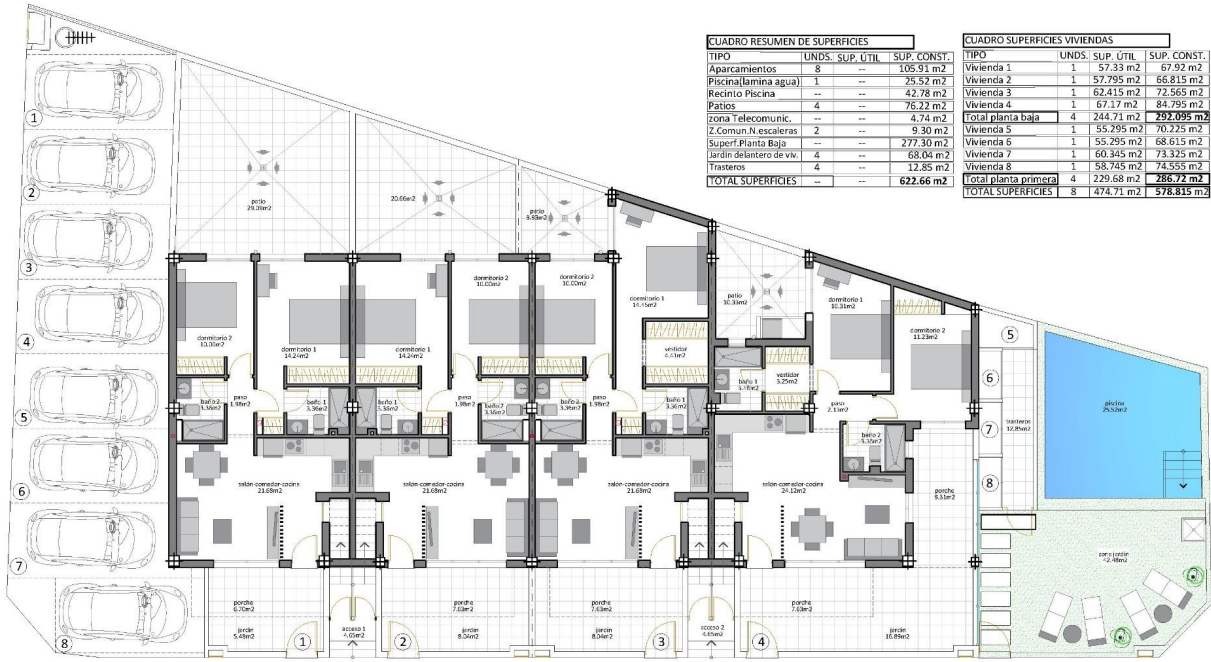






# SAN PEDRO DEL PINATAR

## PLANTA BAJA GENERAL



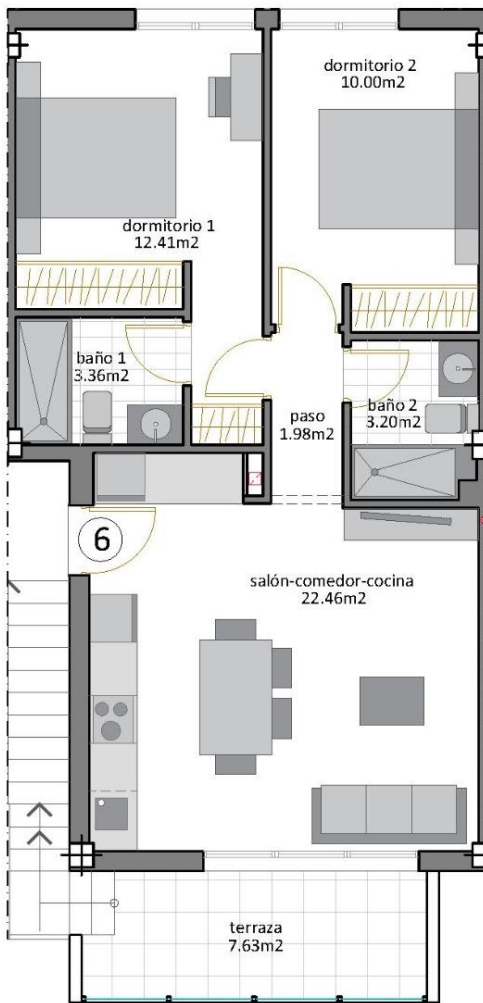
CUADRO RESUMEN DE SUPERFICIES		
TIPO	UNDS.	SUP. UTIL SUP. CONST.
Aparcamientos	8	105.91 m <sup>2</sup>
Piscina(lamina agua)	1	25.52 m <sup>2</sup>
Recinto Piscina	—	42.78 m <sup>2</sup>
Pátios	4	76.22 m <sup>2</sup>
Zona Telecomunic.	—	4.74 m <sup>2</sup>
Z.Comun.N.escaleras	2	9.30 m <sup>2</sup>
Superf.Planta Baja	—	277.30 m <sup>2</sup>
tercero de sanitario de vv.	4	68.04 m <sup>2</sup>
Trasteros	4	12.85 m <sup>2</sup>
<b>TOTAL SUPERFICIES</b>	—	<b>622.66 m<sup>2</sup></b>

CUADRO SUPERFICIES VIVIENDAS		
TIPO	UNDS.	SUP. UTIL SUP. CONST.
Vivienda 1	1	57.33 m <sup>2</sup> 67.92 m <sup>2</sup>
Vivienda 2	1	57.795 m <sup>2</sup> 66.815 m <sup>2</sup>
Vivienda 3	1	62.415 m <sup>2</sup> 72.565 m <sup>2</sup>
Vivienda 4	1	67.17 m <sup>2</sup> 84.795 m <sup>2</sup>
<b>Total planta baja</b>	<b>4</b>	<b>244.71 m<sup>2</sup> 292.095 m<sup>2</sup></b>
Vivienda 5	1	55.295 m <sup>2</sup> 70.225 m <sup>2</sup>
Vivienda 6	1	55.205 m <sup>2</sup> 68.615 m <sup>2</sup>
Vivienda 7	1	60.345 m <sup>2</sup> 73.325 m <sup>2</sup>
Vivienda 8	1	58.745 m <sup>2</sup> 74.555 m <sup>2</sup>
<b>Total planta primera</b>	<b>4</b>	<b>229.68 m<sup>2</sup> 286.72 m<sup>2</sup></b>
<b>TOTAL SUPERFICIES</b>	<b>8</b>	<b>474.71 m<sup>2</sup> 578.815 m<sup>2</sup></b>

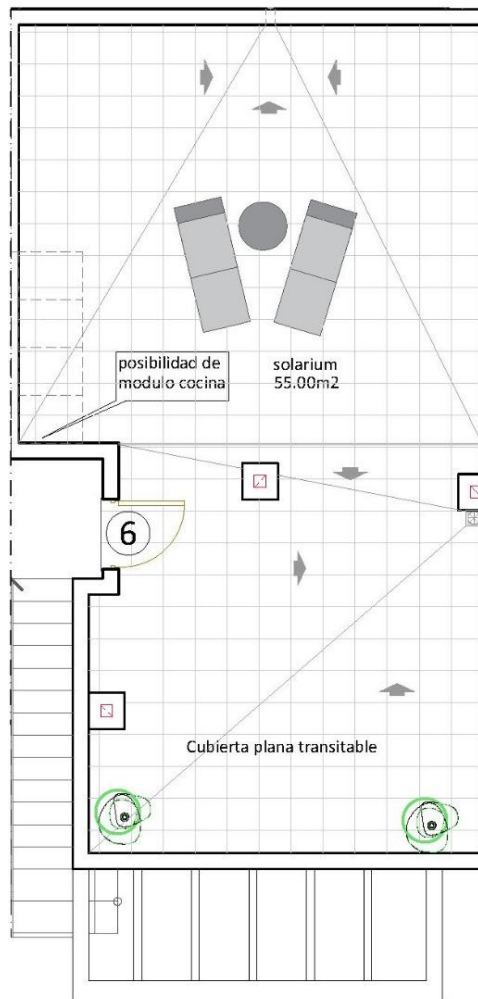


ESCALA: 1/100

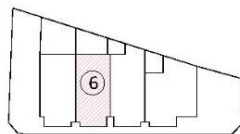
VIVIENDA 6



PLANTA PRIMERA



PLANTA SOLARIUM



CUADRO SUPERFICIES VIVIENDA 6			
TIPO	UNDS.	SUP. ÚTIL	SUP. CONST.
Vivienda 6	1	55.295 m2	68.615 m2

+Trastero Planta Baja



ESCALA: 1/75



***"OUR EXPERIENCE IS YOUR GUARANTEE"***