



REF: # 12740

LOS ALCAZARES (SERENA GOLF)



INFO

PRIX:	269.000 €
TYPE:	Appartement
CITY:	Los Alcazares (Serena Golf)
CHAMBRES:	2
Ba ENFANTS:	2
Built (m2):	74
pas (m2):	-
Terrasse (m2):	32
A ENFANTS:	
de plante:	-
MESSAGE	-



DESCRIPTION

NEW BUILD RESIDENTIAL APARTMENT IN "LA SERENA GOLF COURSE" LOS ALCAZARES - New Build residential is composed of 32 apartments and penthouses with 2 and 3 bedrooms and 9 exclusive villas combining modern design, quality and functionality. The unbeatable location offers amazing views to golf and the Mar Menor sea. This modern 74m2 apartment consists of 2 bedrooms, 2 bathrooms, open plan kitchen and the lounge area, fitted wardrobes, terraces, parking space and storage rooms. Penthouses have private solariums. Residential located in a frontline of the prestigious golf course "La Serena Golf". This golf course is well renowned for its lakes and vegetation that interweave with the golf course. The water and lakes are present in 16 of the 18 holes, but all the course is designed to offer the golfer different strategies in each hole. Another aspect that makes this golf course unique is that it's connected by walking to the city centre, something impossible to find in other golf locations that allow us to enjoy the calm and the beauty of the area without refusing the access to the services that Los Alcázares offers. Residential located in Los Alcázares

an exceptional area on the Costa Cálida at only 25 minutes from Murcia airport and 55 min from Alicante airport. The area is connected through highway with the cities of Cartagena, Murcia and Alicante and the rest of the beaches of the Costa Cálida and the Costa Blanca.



STYLE	VIEW	CLIMATISATION	DISTANCE :
<ul style="list-style-type: none">modernecontemporain	<ul style="list-style-type: none">Panoramico	<ul style="list-style-type: none">Central	Beach : 1 Km aéroport: 40 Km : 1 Km
POSITION	MEUBLÉ	PARKING PAS. CAR	ÉTAGE
Sud-Ouest	<ul style="list-style-type: none">Vide	: 1	<ul style="list-style-type: none">tuiles
CUISINE	JARD RIVIÈRE ET TERRASSES N	CHAUFFAGE	EXTRA
<ul style="list-style-type: none">cuisinecuisine équipéegranit	<ul style="list-style-type: none">Terrasse couverteTerrasse ouverteclôturesmurs en pierreJard RIVER n privéeJard RIVER Communauté	<ul style="list-style-type: none">chauffage électrique	<ul style="list-style-type: none">intégréPorte de sécuritéDouble vitrageElevator

PROPERTY GALLERY







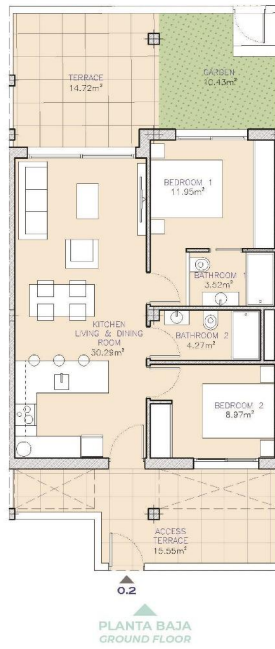
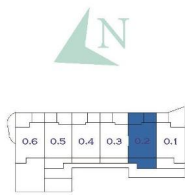






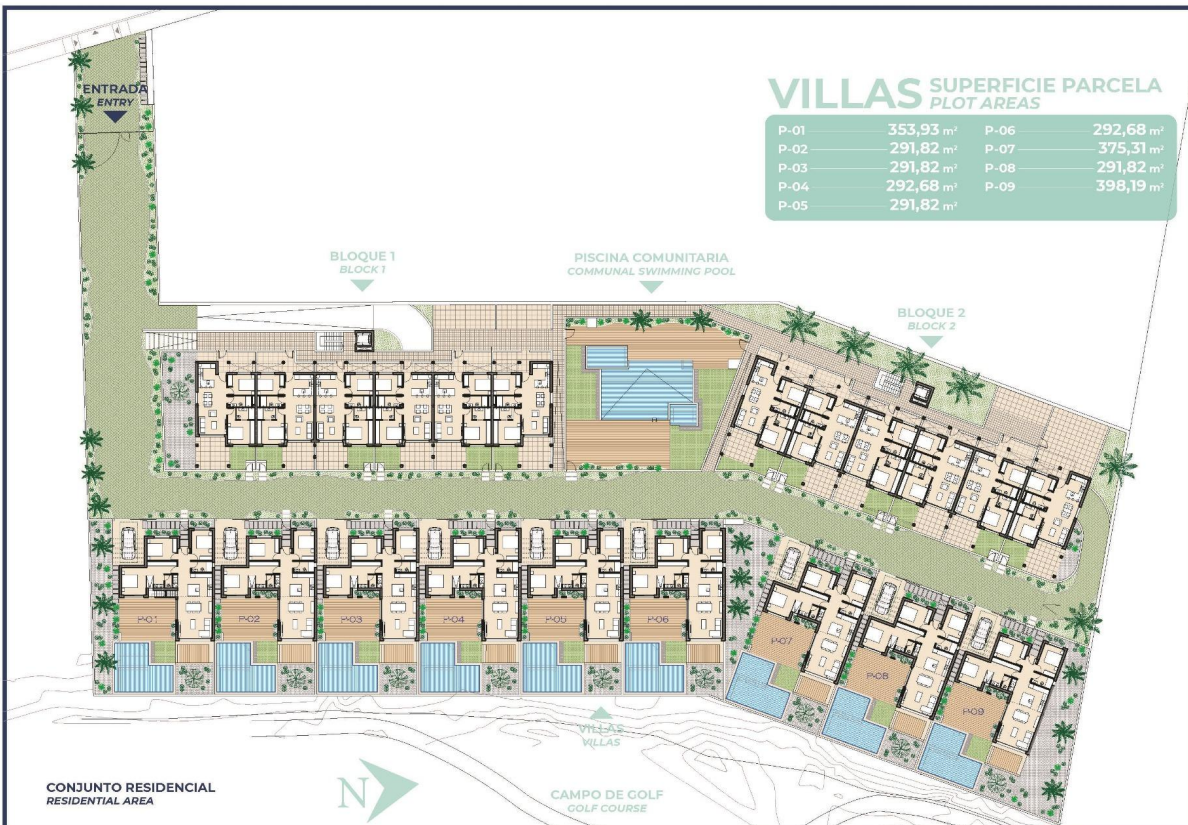
APART. 0.2

SUPERFICIE CONSTRUIDA BUILT AREA	68,70 m ²
TERRAZA TERRACE	14,72 m ²
JARDÍN GARDEN	10,43 m ²
ACCESO TERRAZA ACCESS TERRACE	15,55 m ²
TOTAL	109,40 m ²



VILLAS SUPERFICIE PARCELA PLOT AREAS

P-01	353,93 m ²	P-06	292,68 m ²
P-02	291,82 m ²	P-07	375,31 m ²
P-03	291,82 m ²	P-08	291,82 m ²
P-04	292,68 m ²	P-09	398,19 m ²
P-05	291,82 m ²		



"OUR EXPERIENCE IS YOUR GUARANTEE"