



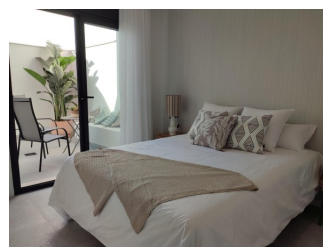
REF: # 12535

PILAR DE LA HORADADA



#### INFO

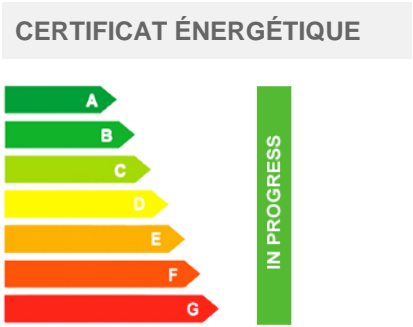
PRIX:	239.900 €
TYPE:	Appartement
CITY:	Pilar De La Horadada
CHAMBRES:	2
Ba ENFANTS:	2
Built ( m2 ):	73
pas ( m2 ):	-
Terrasse ( m2 ):	72
A ENFANTS:	-
de plante:	-
MESSAGE	-



#### DESCRIPTION

**NEW BUILD BUNGALOWS IN PILAR DE LA HORADADA** New Build developmen located in an unbeatable location, in the centre of Pilar de la Horadada. An area that offers all the necessary services and amenities, such as supermarkets. Additionally, its proximity to the beach makes it an ideal option for your leisure time and Summer getaways. This residential complex is characterised by its 12 bungalow apartments, which offers 1 bedroom and 1 bathroom properties at a very affordable price, 2 bedroom and 2 bathroom properties and also 3 bedroom and 2 bathroom properties, to cover the needs of each client, offering comfort and style. The interiors, elegant and functional, have fully equipped kitchens including electrical appliances. The bathrooms have a vanity unit with washbasin and light. Each property has pre-installation for ducted air conditioning, a magnificent solarium for the upper floors and an attractive communal swimming pool area, making it the perfect place to enjoy and relax. Excellent location, 5 minutes from the sandy beaches and most prestigious 18-hole Lo Romero golf course. Pilar de la Horadada is a typical Spanish village in the most southern part of the

Costa Blanca. The large main street has supermarkets, lots of shops, restaurants and bars and some lovely squares. The beautiful beaches of Torre de la Horadada and Mil Palmeras with fine sand promenade is just 5 minutes away. The airports of Corvera (Murcia) and Alicante are respectively 40 and 55 minutes away.



**VIEW**

- Panoramico

**CLIMATISATION**

- Central

**PARKING PAS. CAR**

: 1

**JARD RIVIÈRE ET  
TERRASSES N**

- clôtures



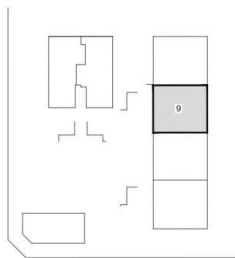




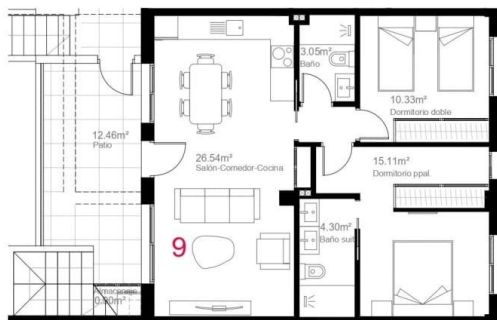




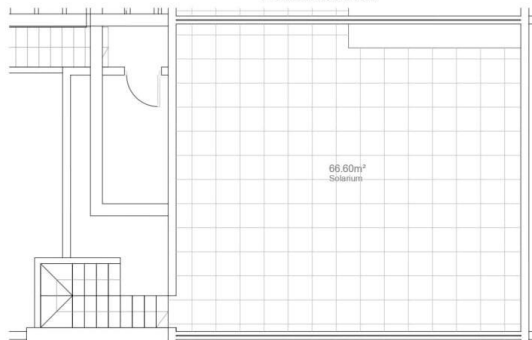




VIVIENDA 9



PLANTA SOLARIUM



SUPERFICIES CONSTRUIDAS VIVIENDA 9	
PLANTA PRIMERA	
Superficie Patio	12.46m²
Superficie SOLARIUM	66.60m²
Superficie construida P1 TOTAL   73.16m²	

**"OUR EXPERIENCE IS YOUR GUARANTEE"**