



REF: # 12519

SAN MIGUEL DE SALINAS (VISTABELLA GOLF)



INFO

PRIX:	429.000 €
TYPE:	Villa
CITY:	San Miguel de Salinas (Vistabella Golf)
CHAMBRES:	4
Ba ENFANTS:	3
Built (m2):	144
pas (m2):	304
Terrasse (m2):	71
A ENFANTS:	-
de plante:	-
MESSAGE	-



DESCRIPTION

NEW BUILD VILLAS IN VISTABELLA GOLF RESORT, ORIHUELA COSTA New Build luxury villas built over 2 floors situated in Vistabella golf resort, between San Miguel and Los Montesinos in the Orihuela Costa. Villas with 4 bedrooms, 3 bathrooms, an open plan living room with the kitchen, big solarium, garden with parkig and space for the private pool. An options a private pool at an extra cost. Vistabella Golf resort has security entrance, 18 hole golf course, padel courts, bowling greens, supermarket and a great selection of bars and restaurants. Plans are now agreed for a new clubhouse, champagne bar, sushi bar, spa hotel, artificial beach, tennis court, football pitch, gourmet bar and much more transforming this resort into a 5 star luxury complex. Sandy beaches of La Mata and Guardamar del Segura located only 20 minues drive away. Alicante airport located 40 minutes away and Murcia airport about 1 hour away.

CERTIFICAT ÉNERGÉTIQUE



VIEW

- Panoramico

CLIMATISATION

- Central

PARKING PAS. CAR

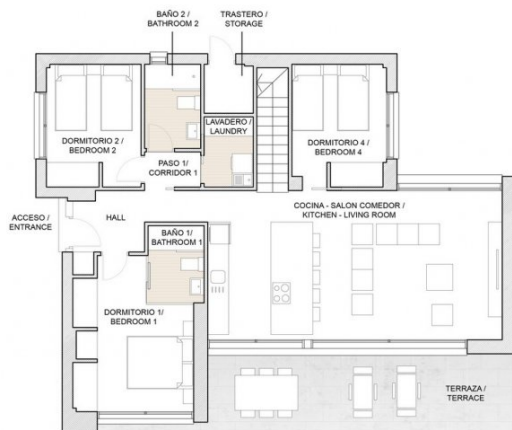
: 1

JARD RIVIÈRE ET
TERRASSES N

- clôtures







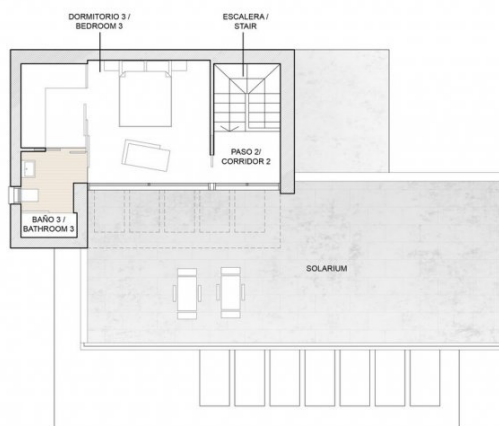
PLANTA BAJA /
GROUND FLOOR

Superficie construida / Built area

PROPIEDAD / PROPERTY	144,43 m²
TERRAZAS / TERRACES	19,80 m²
SOLARIUM	52,20 m²
TOTAL CONSTRUIDA / BUILT AREA	216,43 m²

Planta Baja / Ground Floor Superficies útiles / Useful surface

ACCESO / ENTRANCE	1,39 m²
HALL	5,40 m²
DORMITORIO 1 / BEDROOM 1	13,03 m²
BAÑO 1 / BATHROOM 1	3,52 m²
COCINA-SALÓN COMEDOR / KITCHEN - LIVING ROOM	35,70 m²
DORMITORIO 2 / BEDROOM 2	9,37 m²
DORMITORIO 4 / BEDROOM 4	9,20 m²
BAÑO 2 / BATHROOM 2	3,84 m²
PASO 1 / CORRIDOR 1	1,60 m²
LAVADERO / LAUNDRY	2,80 m²
TRASTERO / STORAGE	1,95 m²
TERRAZA / TERRACE	19,80 m²



PLANTA ALTA /
TOP FLOOR

Planta Alta / Top Floor Superficies útiles / Useful surface

ESCALERA / STAIR	5,10 m²
PASO 2 / CORRIDOR 2	2,79 m²
DORMITORIO 3 / BEDROOM 3	16,80 m²
BAÑO 3 / BATHROOM 3	4,10 m²
SOLARIUM	52,20 m²











"OUR EXPERIENCE IS YOUR GUARANTEE"