



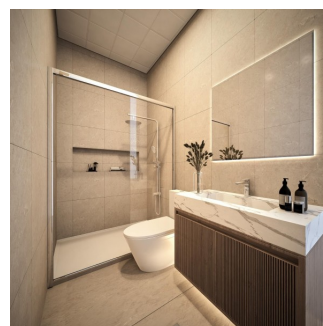
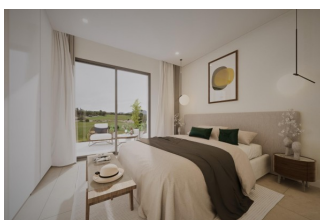
REF: # 12508

LOS ALCAZARES (SERENA GOLF)



INFO

PRIX:	769.900 €
TYPE:	Villa
CITY:	Los Alcazares (Serena Golf)
CHAMBRES:	3
Ba ENFANTS:	4
Built (m2):	224
pas (m2):	278
Terrasse (m2):	110
A ENFANTS:	-
de plante:	-
MESSAGE	-



DESCRIPTION

Luxury Golf Villas in Los Alcázares, Murcia This exclusive collection of luxury villas in Los Alcázares, Murcia, is perfectly positioned on the first line of a prestigious golf course. Offering breathtaking views and direct access to the fairways, these villas are ideal for golf lovers and those seeking an upscale lifestyle. Modern Design with Private Pools Each villa is meticulously designed with modern architecture and includes a private pool for relaxation. With semidetached and townhouse options, the homes feature large windows and open-plan living spaces, creating a bright and inviting atmosphere. These villas seamlessly blend elegance with everyday practicality. High-End Finishes and Comfort Inside, you'll find contemporary kitchens with top-quality appliances and luxurious bathrooms with premium fixtures. Spacious living areas are crafted for comfort, while outdoor spaces, including landscaped gardens and terraces, provide a peaceful setting for alfresco dining or lounging by the

pool. Prime Location in Los Alcázares Located just 3 km from the beaches of the Mar Menor and 30 km from Murcia-Corvera Airport, these villas offer easy access to key attractions. The vibrant town center is 2 km away, and Cartagena’s historic port is within a 20 km drive. A Unique Opportunity These villas offer a luxurious lifestyle, perfect as a permanent residence or vacation retreat in one of Spain’s most desirable locations.



VIEW

- Panoramico

CLIMATISATION

- Central

PARKING PAS. CAR

: 1

**JARD RIVIÈRE ET
TERRASSES N**

- clôtures
- Jard RIVER n privée

PROPERTY GALLERY









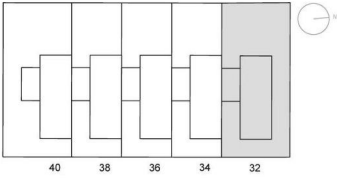






VILLA 32

BASEMENT:	
Courtyard:	3.15 m²
Basement housing:	116.34 m²
Golf course terrace:	51.40 m²
Pool:	12.20 m²
Surface basement:	183.39 m²
GROUND FLOOR:	
Front garden:	41.30 m²
Side garden:	67.70 m²
Ground floor housing:	84.45 m²
Golf course terrace:	26.30 m²
Surface ground floor:	221.75 m²
FIRST FLOOR:	
Front terrace:	5.50 m²
First floor housing:	40.88 m²
Golf course terrace:	25.40 m²
Total Surface first floor:	72.18 m²
TOTAL SURFACE:	477.32 m²
PLOT:	278.31 m²



BASEMENT



GROUND FLOOR



FIRST FLOOR

"OUR EXPERIENCE IS YOUR GUARANTEE"