



REF: # 12472

TORREVIEJA



INFO

PRIX:	181.900 €
TYPE:	Appartement
CITY:	Torrevieja
CHAMBRES:	1
Ba ENFANTS:	1
Built (m2):	35
pas (m2):	-
Terrasse (m2):	1
A ENFANTS:	-
de plante:	-
MESSAGE	-



DESCRIPTION

New Build Development in the Heart of Torrevieja Located in the vibrant center of Torrevieja, this new build development offers the perfect combination of modern living and accessibility. Situated just 300 meters from a wide array of services, including restaurants, bars, supermarkets, taxis, bus stops, pharmacies, and banks, this property provides unparalleled convenience in one of the most sought-after areas of the city. Proximity to Beaches and Entertainment One of the standout features of this property is its close proximity to the stunning beaches of Torrevieja, located just 600 meters away. Whether you're looking to relax by the sea or explore the local area, you'll find yourself close to some of the best coastal spots. Additionally, the renowned shopping center "Las Habaneras" is just 1 km away, offering a variety of shops, entertainment, and dining options. For outdoor enthusiasts, the beautiful "Parque Europa" is also nearby, perfect for leisurely walks and family outings. Modern Design and Amenities This residential building is comprised of

17 units, featuring studio apartments as well as 1, 2, and 3-bedroom layouts. Designed with modern living in mind, each unit offers spacious interiors and high-quality finishes. Residents can enjoy a community rooftop area with a heated glass swimming pool, perfect for year-round relaxation. Additional Storage and Location Perks The building also offers optional large storage rooms located in the basement, providing extra space for your belongings. Torrevieja’s main points of interest, such as Alicante Airport (45 km away) and nearby golf courses like Villamartín (10 km), make this an ideal location for those seeking a well-connected and vibrant living environment. This property in the heart of Torrevieja offers everything you need for modern, coastal living.



VIEW

- Panoramico

EXTRA

- Elevator















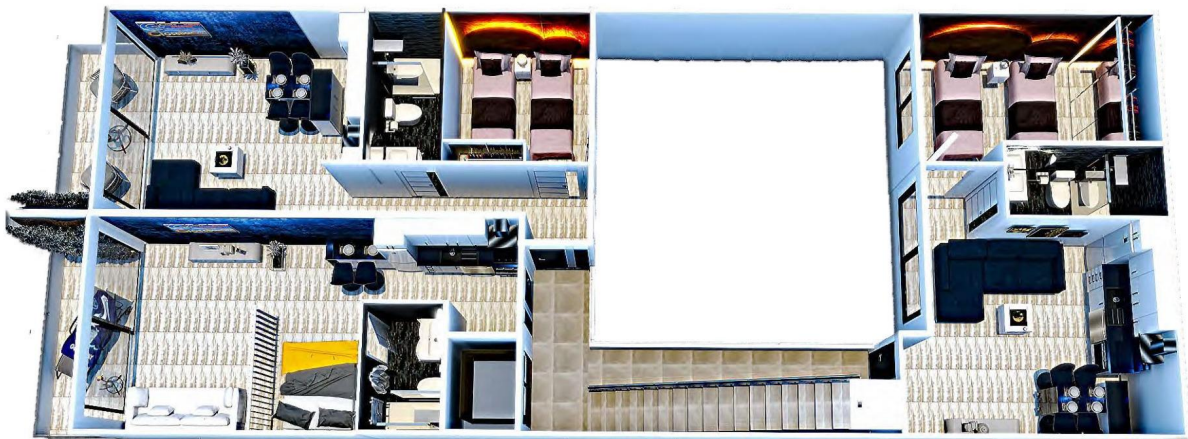






Planta Tipo: 1ª, 2ª, 3ª y 4ª Planta

FloorPlan Type: 1st, 2nd, 3rd and 4th Floor



Tipo/Type: 1



Tipo/Type: 2



Tipo/Type: 3



"OUR EXPERIENCE IS YOUR GUARANTEE"