



REF: # 12468

TORREVIEJA



INFO	
PRIX:	464.000 €
TYPE:	
CITY:	Torrevieja
CHAMBRES:	3
Ba ENFANTS:	2
Built (m2):	74
pas (m2):	-
Terrasse (m2):	90
A ENFANTS:	-
de plante:	-
MESSAGE	-

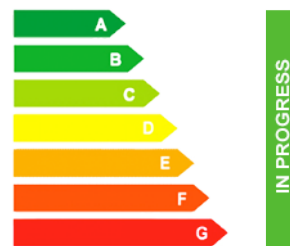


DESCRIPTION

Modern Apartments Near Playa del Cura in Torrevieja Discover this exclusive residential development, located just a few meters from Playa del Cura in Torrevieja, Alicante. This is one of the few residential complexes in the area that offers close proximity to both the beach and the vibrant city center, making it a highly sought-after location. Prime Location in Torrevieja Situated only 160 meters from the famous Playa del Cura and the scenic Paseo Marítimo Juan Aparicio, this development offers residents the chance to live in one of the most desirable coastal locations on the Costa Blanca. Torrevieja is well-known for its sunny weather, with an average temperature of 19°C and over 320 days of sunshine per year. The area is perfect for year-round living, offering not only beautiful beaches but also excellent infrastructure, gastronomy, and a variety of cultural and recreational activities. Exceptional Amenities The development includes a wide range of communal amenities designed for relaxation and enjoyment. The solarium features a stunning pool with a

jacuzzi function, providing the perfect space for residents to unwind and enjoy the Mediterranean climate. Sun loungers around the pool offer an ideal spot to soak up the sun, while the barbecue and dining area are perfect for entertaining family and friends in a cozy, social environment. Spacious and Bright Apartments Choose from 1, 2, or 3-bedroom apartments, each designed to maximize comfort and quality of life by the sea. The apartments are positioned on a corner lot with east and southeast orientations, ensuring that every unit enjoys abundant natural light throughout the day. Key Distances Alicante Airport: 43 km Villamartin Golf Course: 11 km Habaneras Shopping Center: 3 km Marina Internacional (Port): 2 km Live the coastal lifestyle in one of Torrevieja's most prestigious developments, where comfort meets convenience.

CERTIFICAT ÉNERGÉTIQUE



VIEW

- Panoramico

CLIMATISATION

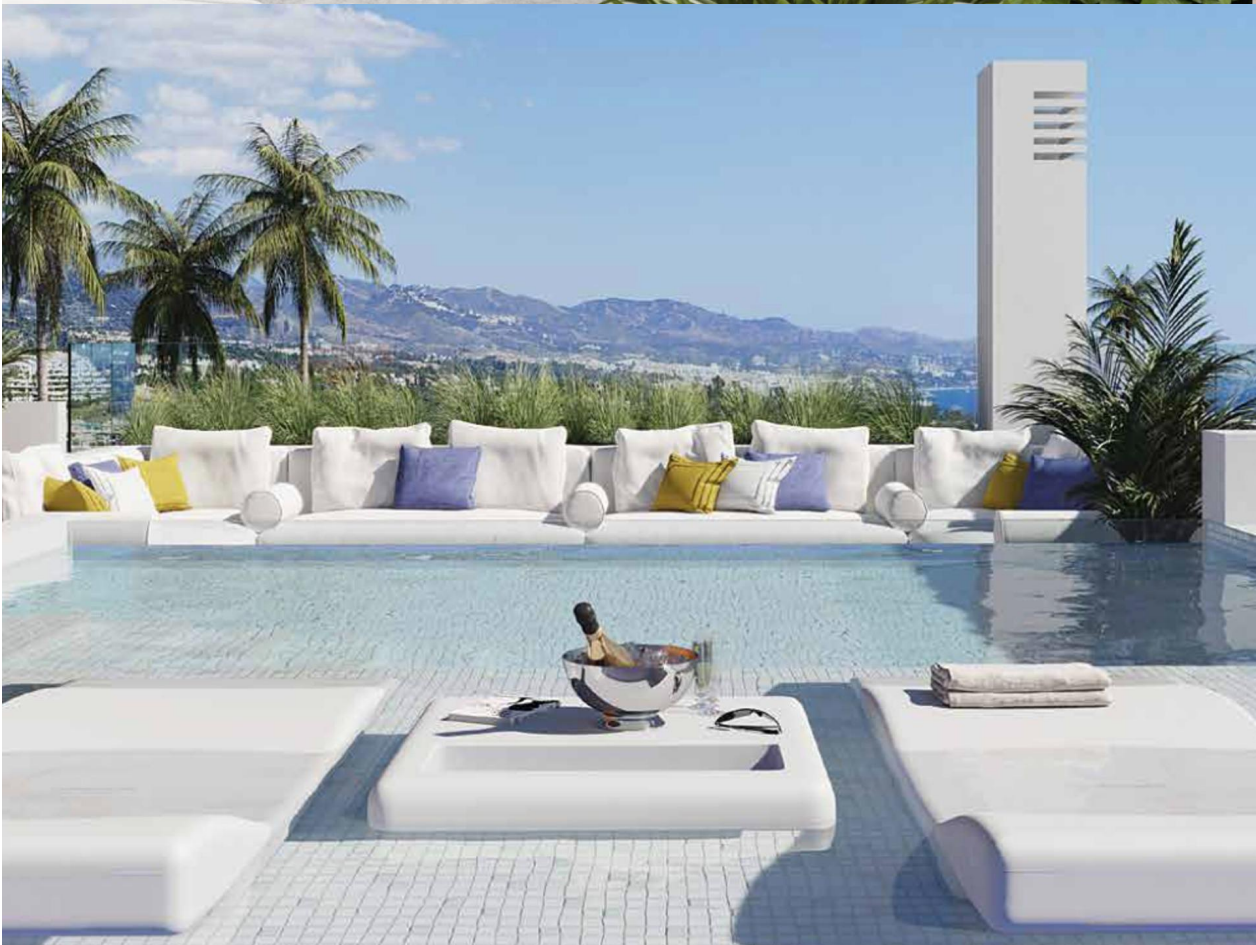
- Central

EXTRA

- Elevator





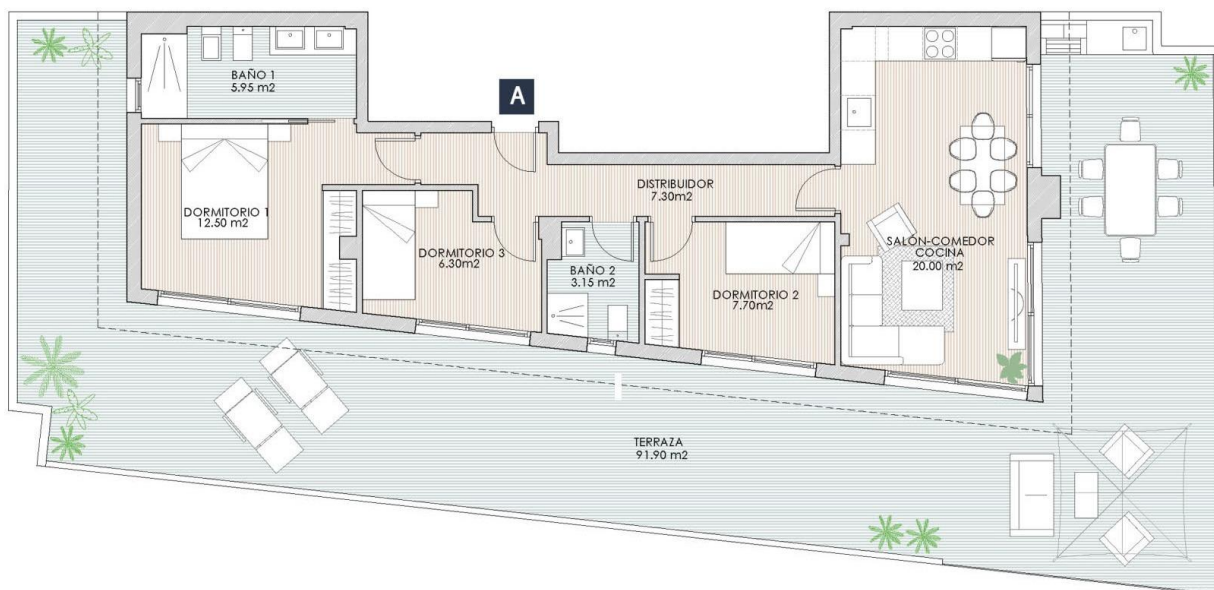












ÁTICO. Planta Cuarta

Superficie Vivienda 74,77 m²

Superficie Terraza 90,95 m²

Escala 1:100



Este plano carece de contractualidad y es meramente informativo, pudiendo estar sujeto a modificaciones de carácter técnico derivadas del desarrollo del Proyecto de edificación y su ejecución. El mobiliario dibujado es a título indicativo, no estando incluido en el precio los muebles, electrodomésticos ni elementos de decoración. Solo se incluye los elementos incluidos en la memoria del Proyecto visado.





"OUR EXPERIENCE IS YOUR GUARANTEE"