



REF: # 12328

PILAR DE LA HORADADA (MIL PALMERAS)



INFO

PRIX:	539.900 €
TYPE:	Villa
CITY:	Pilar De La Horadada (Mil Palmeras)
CHAMBRES:	3
Ba ENFANTS:	3
Built (m2):	131
pas (m2):	91
Terrasse (m2):	39
A ENFANTS:	-
de plante:	-
MESSAGE	-



DESCRIPTION

NEW BUILD VILLAS IN MIL PALMERAS New Build residential of villas in Mila Palmeras designed to enjoy the Mediterranean climate. Each villa has magnificent terraces, solarium and a beautiful garden with a designer swimming pool. With an unbeatable orientation, close to the beach and within a consolidated urbanization with sports facilities and leisure areas. The properties have spacious rooms distributed over 2 floors. On the ground floor, linked to the garden, we find a bright living-dining room plus kitchen as well as a double bedroom and bathroom. On the first floor there are 2 further double bedrooms each with their own bathroom. A fantastic solarium completes the whole on the roof floor. Mil Palmeras is situated in a privileged area of Torre de la Horadada. Its tranquillity as well as its proximity to the beach and all kinds of services make it an unbeatable enclave. Villas located close to the sandy beach with a promenade between Campoamor and Torre de la Horadada, all amenities you need such schools, restaurants, sports facilities etc which are open all year round. The village has a little square and a great 'restaurant alley' which is packed with international restaurants and the

Lo Monte Natural Park which is a special reserve for birds. The natural park of Rio Seco is also here for lovers of nature and hiking. Murcia and Alicante airports located 45 minutes away.

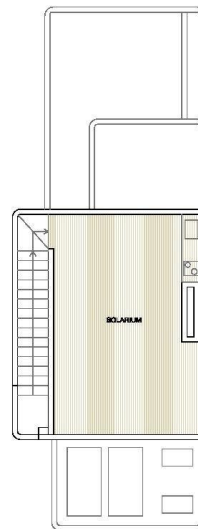


STYLE <ul style="list-style-type: none">modernecontemporain	VIEW <ul style="list-style-type: none">Panoramico	CLIMATISATION <ul style="list-style-type: none">Central	DISTANCE : <div>Beach : 1 Km</div> <div>aéroport: 50 Km</div> <div>: 1 Km</div>
POSITION <div>Sud-Ouest</div>	MEUBLÉ <ul style="list-style-type: none">Vide	PARKING PAS. CAR <div>Garage no. Car : 1</div> <div>: 1</div>	ZONES <ul style="list-style-type: none">ou chambre BAIGNADE
ÉTAGE <ul style="list-style-type: none">tuiles	CUISINE <ul style="list-style-type: none">cuisinecuisine équipéegranit	JARD RIVIÈRE ET TERRASSES N <ul style="list-style-type: none">Terrasse ouverteclôturesmurs en pierreJard RIVER n privée	EXTRA <ul style="list-style-type: none">intégréDouble vitragestockage

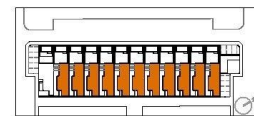
PROPERTY GALLERY







VIVIENDA TIPO V2 A V12



SUPERFICIES ÚTILES / OCCUPIABLE AREA

HALL / HALL	3.95 m ²
LIVING ROOM - KITCHEN	37.10 m ²
DORMITORIO 1 / BEDROOM 1	11.60 m ²
BAÑO 1 / BATHROOM 1	3.90 m ²
PASO / CORRIDOR	7.45 m ²
DORMITORIO 2 / BEDROOM 2	12.00 m ²
BAÑO 2 / BATHROOM 2	4.40 m ²
DORMITORIO 3 / BEDROOM 3	12.80 m ²
BAÑO 3 / BATHROOM 3	3.50 m ²
ESCALERAS / STAIRS	4.90 m ²
TERRAZA P1 / TERRACE 1F	15.00 m ²
SOLARIUM	26.80 m ²
JARDIN 1 / GARDEN 1	91.00 m ²

SUPERFICIES CONST. / BUILT AREA

SUP. CERRADA / CLOSED AREA	131.50 m ²
CLOSED AREA + TERRACE	173.30 m ²
CLOSED AREA + TERRACE + GARDEN	264.30 m ²







"OUR EXPERIENCE IS YOUR GUARANTEE"