



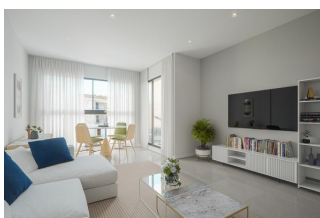
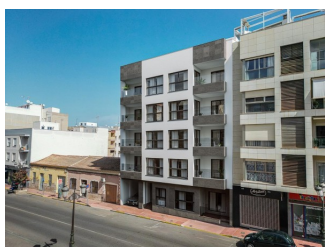
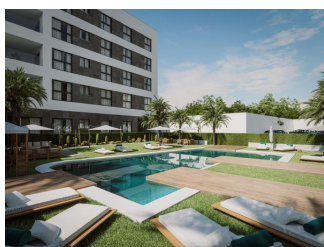
REF: # 12293

GUARDAMAR DEL SEGURA



INFO

PRIX:	377.100 €
TYPE:	
CITY:	Guardamar del Segura
CHAMBRES:	3
Ba ENFANTS:	2
Built (m2):	96
pas (m2):	-
Terrasse (m2):	69
A ENFANTS:	-
de plante:	-
MESSAGE	-



DESCRIPTION

NEW BUILD RESIDENTIAL COMPLEX IN GUARDAMAR DEL SEGURA

New Build residential complex located in the heart of Guardamar del Segura in a privileged location next to all services. Residential made up of a 2 and 3 bedrooms apartments and 3 bedrooms penthouses, all has an open plan kitchen with spacious living room, fitted wardrobes, terrace, storage rooms. A residential area with green areas and a community pool. An options parking spaces on the ground floor at an extra cost. Guardamar del Segura is a town located on the Costa Blanca South. With its 11 kilometers of natural beach and its large pine forest. Guardamar is a quiet town to live in, it has all the services throughout the year such as restaurants, bars, shops, banks, places for leisure, etc. Every Wednesday, in the central streets of the town, a market is organized where many people go to buy products such as food, clothing, furniture, animals, etc. It is a great claim and inhabitants of the surrounding town come to Guardamar every Wednesday to visit the market. Guardamar del Segura has a large port with activities throughout the year, it has a large sports centre with paddle tennis, tennis, soccer

and a large heated swimming pool that works all year round. It also has a library where there is free wifi and computers. Guardamar del Segura is only 20km away from the Alicante - Elche (El Altet) airport, where there are many flights every day with connections to the main European cities, due to the demand for tourists on the Costa Blanca.



VIEW

- Panoramico

CLIMATISATION

- Central

PARKING PAS. CAR

: 1

JARD RIVIÈRE ET
TERRASSES N

- clôtures

EXTRA

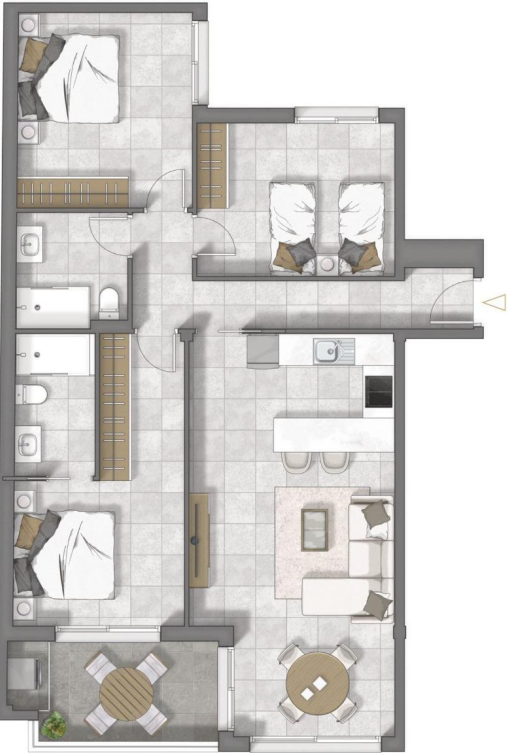
- Elevator

PROPERTY GALLERY

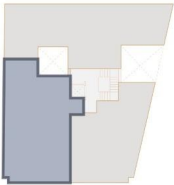








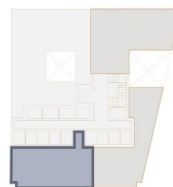
PLANTA 4ª
Puerta C



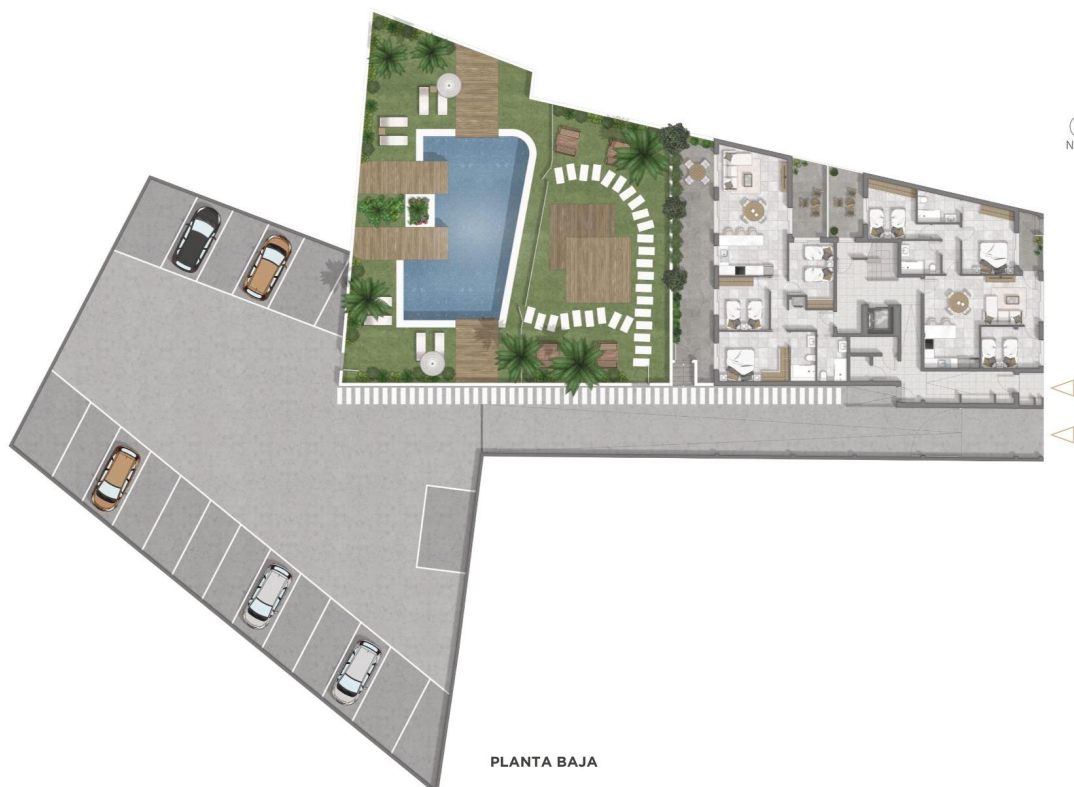
Superficie vivienda:	102.20 m ²
Superficie vivienda con zona común:	114.21 m ²
Superficie solarium:	42.10 m ²



PLANTA SOLARIUM
Puerta C



Superficie vivienda:	102.20 m ²
Superficie vivienda con zona común:	114.21 m ²
Superficie solarium:	42.10 m ²



PLANTA BAJA







"OUR EXPERIENCE IS YOUR GUARANTEE"