



REF: # 12271

PILAR DE LA HORADADA



INFO

PRIX: 315.900 €

TYPE: Maison

CITY: Pilar De La Horadada

CHAMBRES: 2

Ba ENFANTS: 2

Built (m2): 69

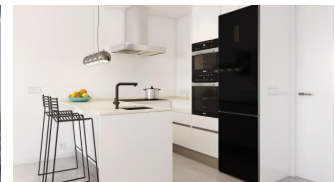
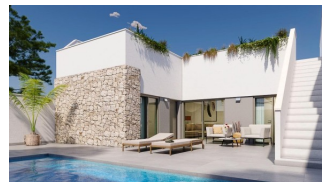
pas (m2): 139

Terrasse (m2): 73

A ENFANTS: -

de plante: -

MESSAGE -



DESCRIPTION

NEW BUILD TOWNHOUSES IN PILAR DE LA HORADADA New Build townhouses located in Pilar de la Horadada. Townhouses build on 1 floor and has private solarium, 2 bedrooms, 2 bathrooms, open plan kitchen with the living room, garden with parking space. An options for a private pool at an extra cost. Properties located a few meters from all services and the centre. Pilar de la Horadada is a typical Spanish village in the most southern part of the Costa Blanca. The large main street has supermarkets, lots of shops, restaurants and bars and some lovely squares. The beautiful beaches of Torre de la Horadada and Mil Palmeras with fine sand promenade is just 5 minutes away. In Pilar de la Horadada there is also a well-developed cycling and walking path network, and there is also a large offer of various sports activities. Lo Romero 18 hole golf course is just a short drive from town. The airports of Corvera (Murcia) and Alicante are respectively 40 and 55 minutes away.

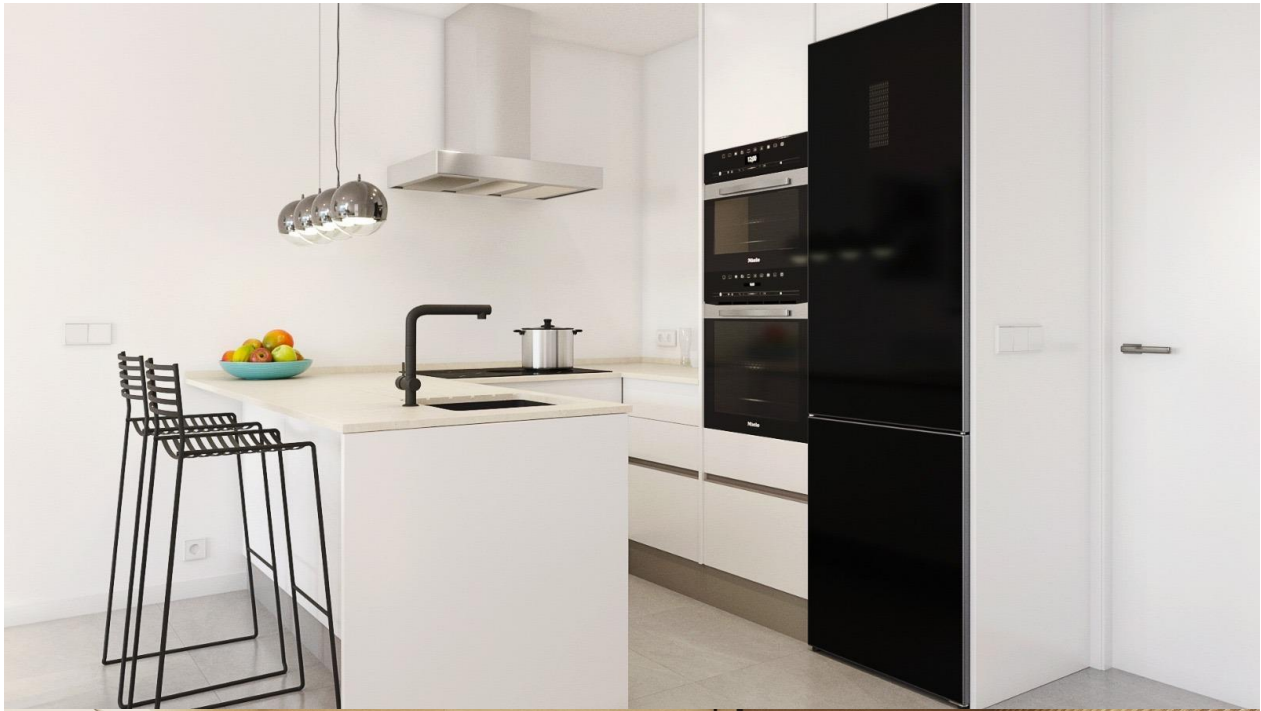
CERTIFICAT ÉNERGÉTIQUE



STYLE <ul style="list-style-type: none">modernecontemporain	VIEW <ul style="list-style-type: none">Panoramico	CLIMATISATION <ul style="list-style-type: none">Central	DISTANCE : aéroport: 60 Km
POSITION Sud-Ouest	MEUBLÉ <ul style="list-style-type: none">Vide	PARKING PAS. CAR : 1	ZONES <ul style="list-style-type: none">ou chambre Baignade
ÉTAGE <ul style="list-style-type: none">tuiles	CUISINE <ul style="list-style-type: none">cuisinecuisine équipéegranit	JARD RIVIÈRE ET TERRASSES N <ul style="list-style-type: none">Terrasse ouverteFeux extérieursPaysageclôturesmurs en pierreJard River n privée	CHAUFFAGE <ul style="list-style-type: none">chauffage électrique
EXTRA <ul style="list-style-type: none">intégréPorte de sécuritéDouble vitrage			







Plot nº13

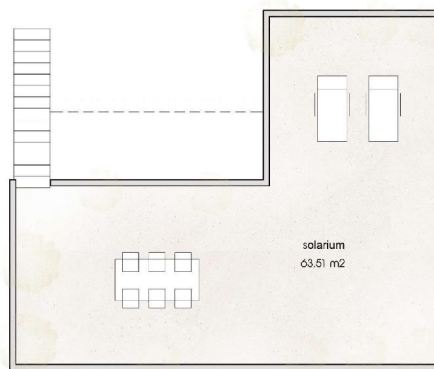


PB / GROUND FL.



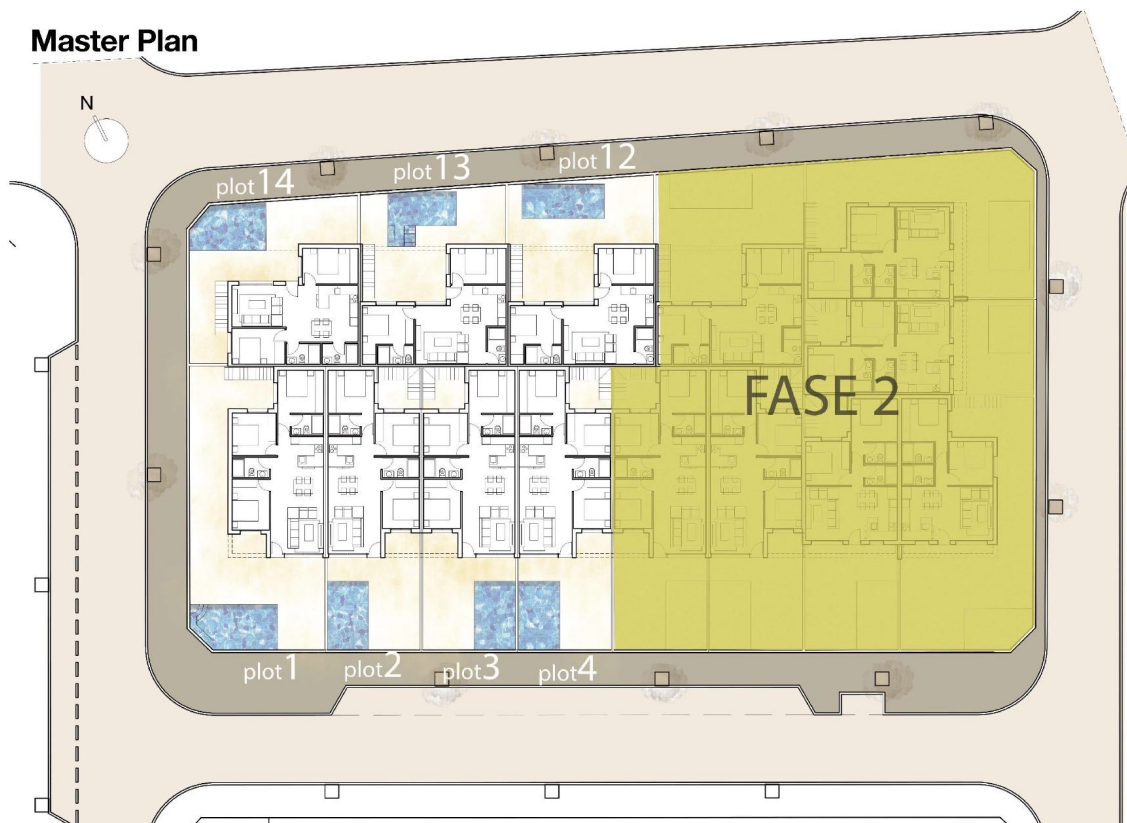
VILLA Nº 13 PLOT 13 139,80 m2

SUP. CONSTR. VIV.P.B.....	69,30 m2
SUP. CONSTR. Porch (50%).....	5,00 m2
SUP. CONST.TOTAL	74,30 m2
SUP. ÚTIL SOLARIUM	63,51 m2
SUP. TOTAL VIV	137,81 m2



P1 / FIRST FL.

Master Plan







"OUR EXPERIENCE IS YOUR GUARANTEE"