



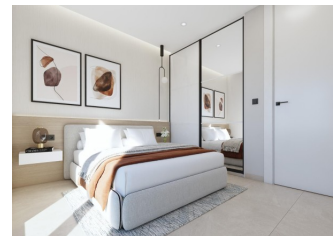
REF: # 12252

GUARDAMAR DEL SEGURA



INFO

PRIX:	287.000 €
TYPE:	Appartement
CITY:	Guardamar del Segura
CHAMBRES:	2
Ba ENFANTS:	2
Built (m2):	79
pas (m2):	-
Terrasse (m2):	6
A ENFANTS:	-
de plante:	-
MESSAGE	-



DESCRIPTION

NEW BUILD RESIDENTIAL IN GUARDAMAR DEL SEGURA - only 100m to the beach! New Build residential of apartments and penthouses in Guardamar del Segura. This outstanding building is the perfect choice thanks to its proximity to the beach and a wide range of services. Its facilities will include a swimming pool and rooftop solarium, providing a space for residents to relax and enjoy. Modern properties with 2 and 3 bedrooms, 2 bathrooms, a bright living-dining room with integrated kitchen and a cosy terrace. All properties will be equipped with air conditioning and home automation, allowing residents to control and automate various aspects of the home, providing comfort and energy efficiency. The kitchen will feature high quality appliances, including oven, dishwasher, fridge-freezer, extractor hood and induction hob, ensuring a functional and modern space for cooking and enjoying meals with company. In addition, there is the option to purchase a parking space and storage room in the same building, providing greater convenience and storage space for residents. Residential is in a privileged location, close to the beach and surrounded by a wide variety

of services and amenities, such as restaurants, shops, supermarkets and leisure areas. Guardamar del Segura, known for its beautiful fine sandy beaches and natural environment, offers a quiet and relaxed lifestyle, without renouncing the necessary facilities within easy reach.



STYLE	VIEW	DISTANCE :	MEUBLÉ
<ul style="list-style-type: none">moderne	<ul style="list-style-type: none">Panoramico	Beach : 100 m aéroport: 30 Km	<ul style="list-style-type: none">Vide
PARKING PAS. CAR	ÉTAGE	CUISINE	JARD RIVIÈRE ET TERRASSES N
: 1	<ul style="list-style-type: none">tuilesStone	<ul style="list-style-type: none">cuisinecuisine équipée	<ul style="list-style-type: none">clôtures
EXTRA			
<ul style="list-style-type: none">intégréAlarmePorte de sécuritéDouble vitrageElevator			























Vivienda PRIMERO D

Superficies	
Vivienda	64,47m ²
Terraza (100%)	6,34m ²
Patio	5,78m ²
Zonas comunes	12,59m ²
Total	88,86m²
Superficie computable <small>(vivienda + 50% terrazas cubiertas + zonas comunes)</small>	
	79,91m ²





"OUR EXPERIENCE IS YOUR GUARANTEE"