



REF: # 12250

GUARDAMAR DEL SEGURA



INFO

**PRIX:** 308.500 €

**TYPE:**

**CITY:** Guardamar del Segura

**CHAMBRES:** 2

**Ba ENFANTS:** 2

**Built ( m2 ):** 77

**pas ( m2 ):** -

**Terrasse ( m2 ):** 6

**A ENFANTS:** -

**de plante:** -

**MESSAGE** -



DESCRIPTION

**NEW BUILD RESIDENTIAL IN GUARDAMAR DEL SEGURA** New Build residential of apartments and penthouses in Guardamar del Segura. This outstanding building is the perfect choice thanks to its proximity to the beach and a wide range of services. Its facilities will include a swimming pool and rooftop solarium, providing a space for residents to relax and enjoy. Modern properties with 2 and 3 bedrooms, 2 bathrooms, a bright living-dining room with integrated kitchen and a cosy terrace. All properties will be equipped with air conditioning and home automation, allowing residents to control and automate various aspects of the home, providing comfort and energy efficiency. The kitchen will feature high quality appliances, including oven, dishwasher, fridge-freezer, extractor hood and induction hob, ensuring a functional and modern space for cooking and enjoying meals with company. In addition, there is the option to purchase a parking space and storage room in the same building, providing greater convenience and storage space for residents. Residential is in a privileged location, close to the beach and surrounded by a wide variety of services and amenities, such as restaurants, shops,

supermarkets and leisure areas. Guardamar del Segura, known for its beautiful fine sandy beaches and natural environment, offers a quiet and relaxed lifestyle, without renouncing the necessary facilities within easy reach.

## CERTIFICAT ÉNERGÉTIQUE



## VIEW

- Panoramico

## PARKING PAS. CAR

: 1

---

## JARD RIVIÈRE ET TERRASSES N

- clôtures

## EXTRA

- Elevator

PROPERTY GALLERY



















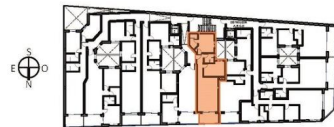
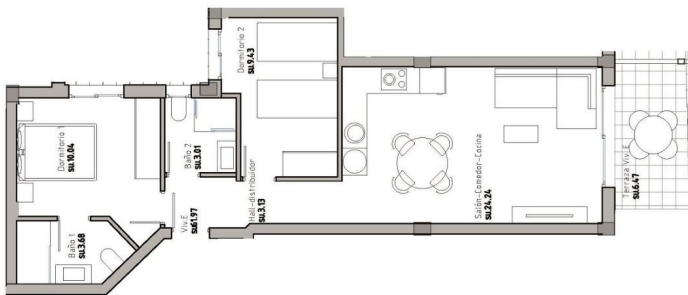






### Vivienda CUARTO E

Superficies	
Vivienda	61,97m <sup>2</sup>
Terraza (100%)	6,47m <sup>2</sup>
Zonas comunes	12,19m <sup>2</sup>
<b>Total</b>	<b>80,63m<sup>2</sup></b>
Superficie computable <small>(vivienda + 50% terrazas cubiertas + zonas comunes)</small>	77,40m <sup>2</sup>



**"OUR EXPERIENCE IS YOUR GUARANTEE"**