



REF: # 12244

ROJALES (BENIMAR)



INFO

PRIX:	355.900 €
TYPE:	Maison
CITY:	Rojales (Benimar)
CHAMBRES:	3
Ba ENFANTS:	2
Built (m2):	113
pas (m2):	124
Terrasse (m2):	31
A ENFANTS:	-
de plante:	-
MESSAGE	-



DESCRIPTION

NEW BUILD TOWNHOUSES IN ROJALES New Build modern residential of townhouses and semi-detached villas in Rojales. Properties has 3 bedrooms, 2 bathrooms, guest toilet, open plan kitchen with living area and direct access to the terrace, private garden with the parking space. An options for a solarium and a private pool at an extra cost. Rojales it is a lovely village with all services such as supermarkets, pharmacies, banks, restaurants and natural park located very close by. There a 3 golf courses nearby and the blue flag beaches are just a short 10 minute drive away, as well as water parks in nearby Rojales and Torrevieja. Alicante & Murcia airports are 45 minutes drive away.

CERTIFICAT ÉNERGÉTIQUE



VIEW

- Panoramico

CLIMATISATION

- Central

PARKING PAS. CAR

: 1

**JARD RIVIÈRE ET
TERRASSES N**

- clôtures
- Jard RIVER n privée

PROPERTY GALLERY









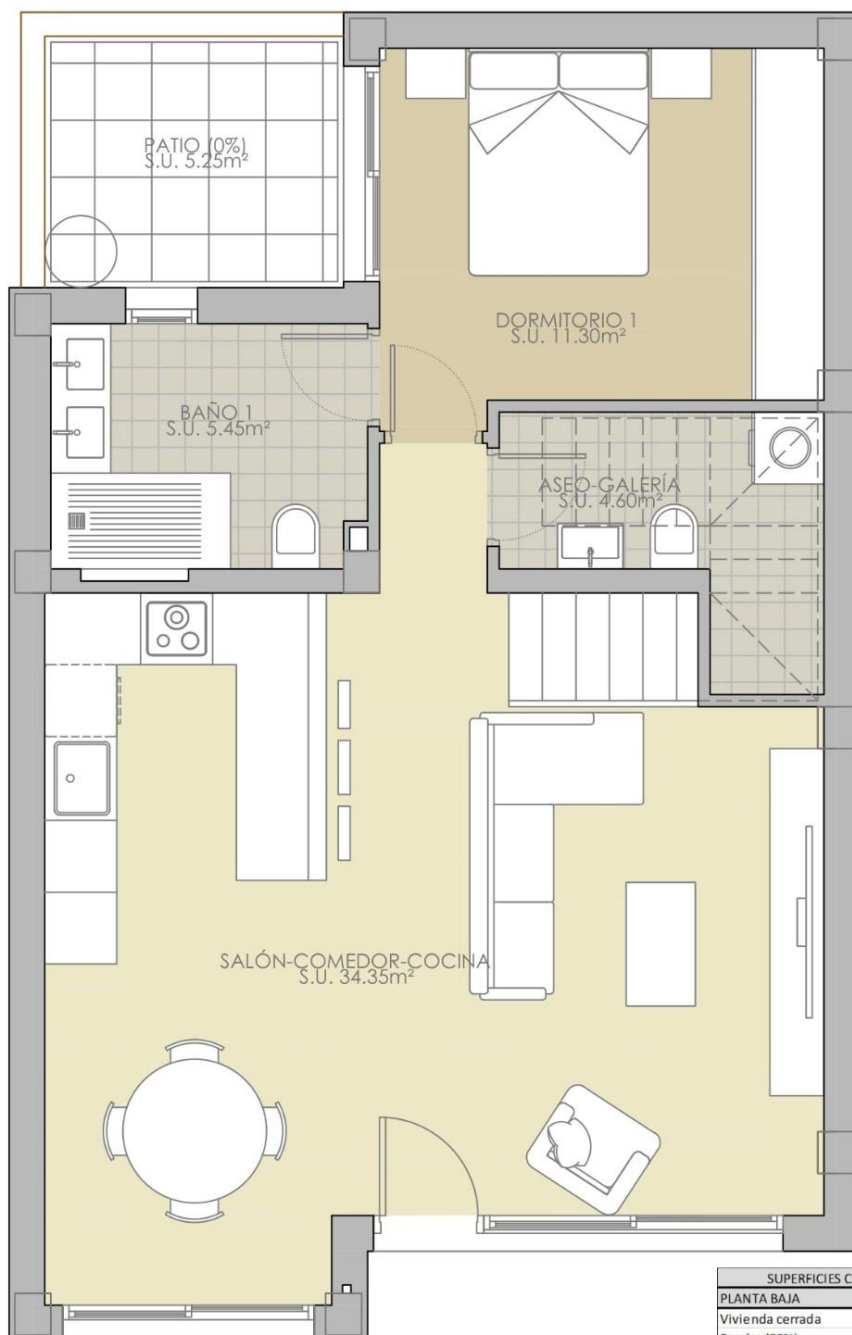




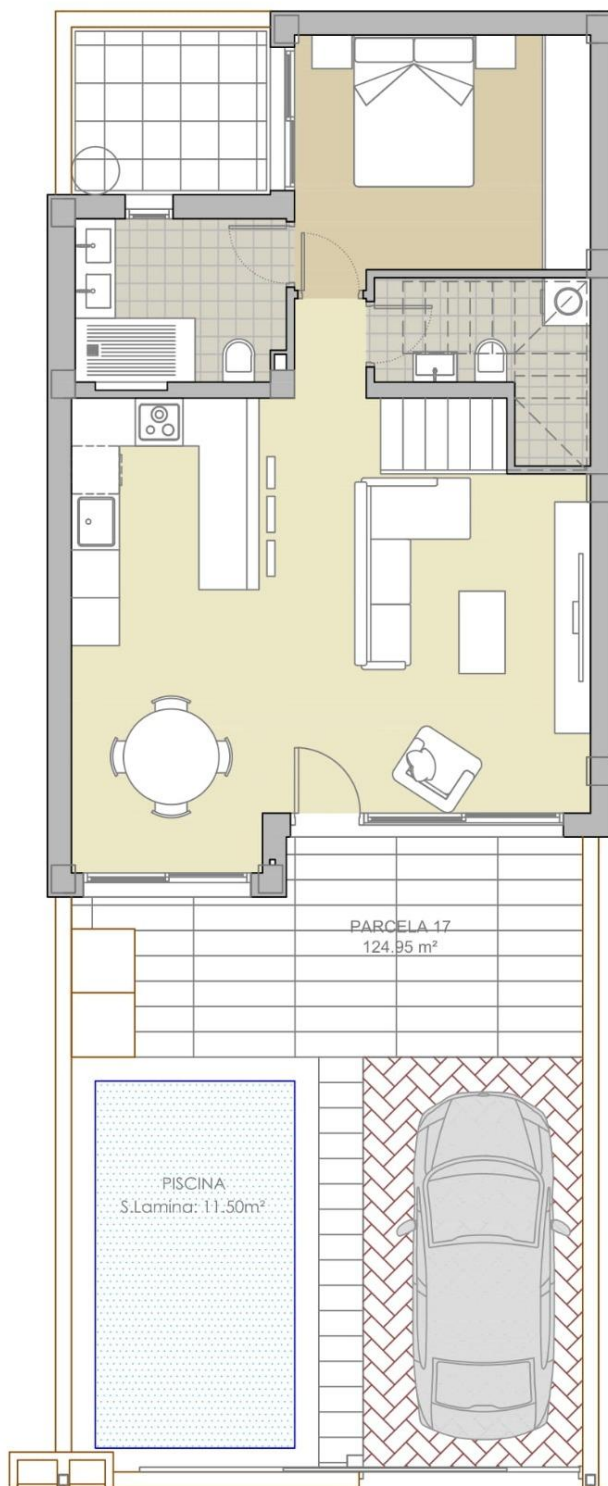








SUPERFICIES CONSTRUIDAS TOTALES		
PLANTA BAJA		
Vivienda cerrada		65,50 m ²
Porche (50%)		5,65 m ²
Patio (0%)		5,25 m ²
PLANTA PISO		
Vivienda cerrada		42,50 m ²
Terraza descubierta (0%)		26,80 m ²
PLANTA CUBIERTA		
Solarium (0%)		39,00 m ²
Escalera ext. (0%)		4,45 m ²
TOTAL		113,65 m ²



7 VIVIENDAS ADOSADAS CON PISCINA

"PLANOS DE VENTA SIN VALOR CONTRACTUAL"

PARCELA 17

SITUACION:

C/ DOÑA MARÍA SATORRE
03170 - ROJALES (ALICANTE)

PROMOTOR :

PROYECTOS ALBA SALINA, S.L.

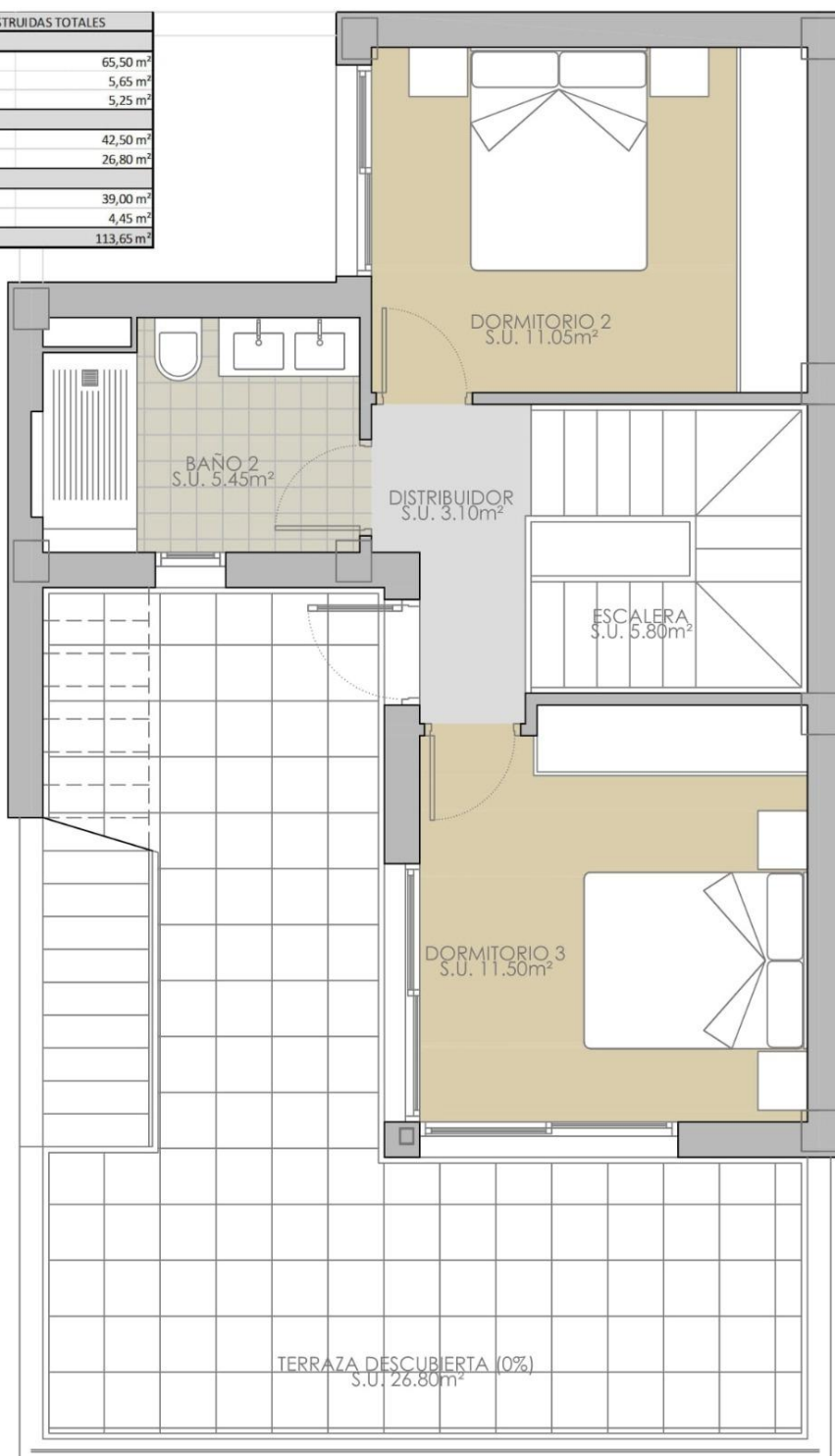
FECHA

JUNIO 2024

ESCALA

1/75

SUPERFICIES CONSTRUIDAS TOTALES	
PLANTA BAJA	
Vivienda cerrada	65,50 m ²
Porche (50%)	5,65 m ²
Patio (0%)	5,25 m ²
PLANTA PISO	
Vivienda cerrada	42,50 m ²
Terraza descubierta (0%)	26,80 m ²
PLANTA CUBIERTA	
Solarium (0%)	39,00 m ²
Escalera ext. (0%)	4,45 m ²
TOTAL	113,65 m ²



"OUR EXPERIENCE IS YOUR GUARANTEE"