



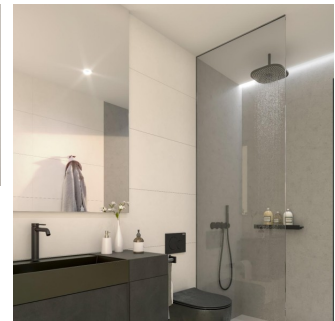
REF: # 12173

LOS ALCAZARES



INFO

PRIX:	685.000 €
TYPE:	Villa
CITY:	Los Alcazares
CHAMBRES:	3
Ba ENFANTS:	3
Built (m2):	228
pas (m2):	350
Terrasse (m2):	94
A ENFANTS:	-
de plante:	-
MESSAGE	-



DESCRIPTION

NEW BUILD RESIDENTIAL COMPLEX NEAR LA SERENA GOLF, LOS ALCAZARES 20 detached villas within a front line golf complex. The villas have 3 bedrooms and 3 bathrooms, basement with garage and storage room, private swimming pool and private solarium. Residential located in a frontline of the prestigious golf course "La Serena Golf". This golf course is well renowned for its lakes and vegetation that interweave with the golf course. The water and lakes are present in 16 of the 18 holes, but all the course is designed to offer the golfer different strategies in each hole. Another aspect that makes this golf course unique is that it's connected by walking to the city centre, something impossible to find in other golf locations that allow us to enjoy the calm and the beauty of the area without refusing the access to the services that Los Alcázares offers. Los Alcázares an exceptional area on the Costa Cálida at only 25 minutes from Murcia airport and 55 min from Alicante airport. The area is connected through highway with the cities of Cartagena, Murcia and

Alicante and the rest of the beaches of the Costa Cálida and the Costa Blanca.



VIEW

- Panoramico

CLIMATISATION

- Central

PARKING PAS. CAR

: 1

JARD RIVIÈRE ET
TERRASSES N

- clôtures

EXTRA

- Elevator







TYPE VILLA PLOT: 350.00 m²

BUILT SURFACE (terrace 100%) **249.90 m²**

TOTAL USABLE SURFACE **236.20 m²**

BASEMENT	
HALL	3.50 m ²
LAUNDRY	9.70 m ²
STORAGE ROOM	20.00 m ²
GARAGE	82.00 m ²

GROUND FLOOR	
LIVING ROOM KITCHEN	51.00 m ²
BEDROOM 1	15.00 m ²
BEDROOM 2	11.30 m ²
BEDROOM 3	10.80 m ²

BATHROOM 1	3.90 m ²
BATHROOM 2	3.90 m ²
BATHROOM 3	3.50 m ²
TERRACE (100%)	21.60 m ²

SOLARIUM	
SOLARIUM (100%)	73.30 m ²



GROUND FLOOR

DIN A3 (1/75)
0 1 2 3 4 5

TYPE VILLA PLOT: 350.00 m²

BUILT SURFACE (terrace 100%) **249.90 m²**

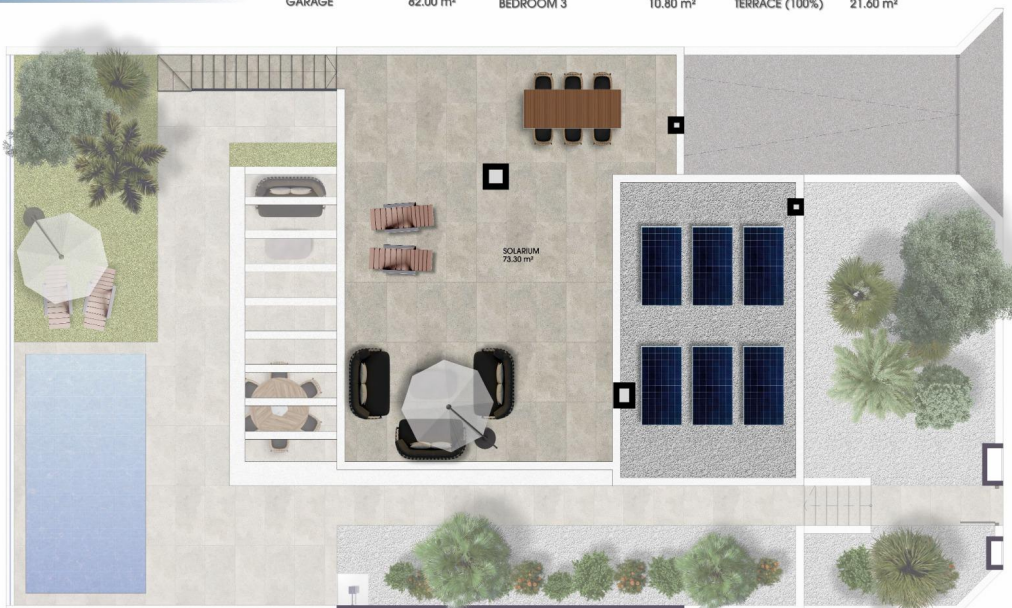
TOTAL USABLE SURFACE **236.20 m²**

BASEMENT	
HALL	3.50 m ²
LAUNDRY	9.70 m ²
STORAGE ROOM	20.00 m ²
GARAGE	82.00 m ²

GROUND FLOOR	
LIVING ROOM KITCHEN	51.00 m ²
BEDROOM 1	15.00 m ²
BEDROOM 2	11.30 m ²
BEDROOM 3	10.80 m ²

BATHROOM 1	3.90 m ²
BATHROOM 2	3.90 m ²
BATHROOM 3	3.50 m ²
TERRACE (100%)	21.60 m ²

SOLARIUM	
SOLARIUM (100%)	73.30 m ²



SOLARIUM

DIN A3 (1/75)
0 1 2 3 4 5

TYPE VILLAPLOT: 350.00 m²**BUILT SURFACE** (terrace 100%) 249.90 m²**TOTAL USABLE SURFACE** 236.20 m²**BASEMENT**

HALL	3.50 m ²
LAUNDRY	9.70 m ²
STORAGE ROOM	20.00 m ²
GARAGE	82.00 m ²

GROUND FLOOR

LIVING ROOM KITCHEN	51.00 m ²	BATHROOM 1	3.90 m ²
BEDROOM 1	15.00 m ²	BATHROOM 2	3.90 m ²
BEDROOM 2	11.30 m ²	BATHROOM 3	3.50 m ²
BEDROOM 3	10.80 m ²	TERRACE (100%)	21.60 m ²

SOLARIUMSOLARIUM (100%) 73.30 m²



"OUR EXPERIENCE IS YOUR GUARANTEE"