



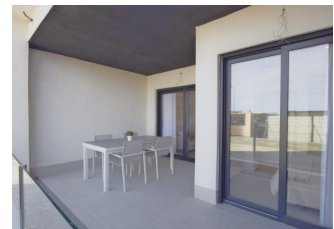
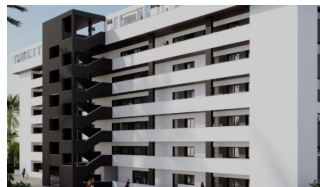
REF: # 12073

TORREVIEJA (LA MATA)



INFO

PRIX:	285.000 €
TYPE:	Appartement
CITY:	Torrevieja (La Mata)
CHAMBRES:	2
Ba ENFANTS:	2
Built (m2):	78
pas (m2):	12
Terrasse (m2):	17
A ENFANTS:	-
de plante:	-
MESSAGE	-



DESCRIPTION

NEW BUILD GATED URBANIZATION IN TORREVIEJA ONLY 700M FROM LA MATA BEACH New Build residential complex of 362 apartments with large community areas in Torrevieja. You can choose between luxury 2 bedrooms and 2 bathrooms apartments , 3 bedrooms and 2 bathrooms penthouses with private solarium and 2 bedroom, 2 bathroom ground floor apartments with private garden. -Modern designs and quality finishes and materials -Almost all apartments will have sea views -All apartments comes with large front terraces facing the community areas -Communal areas with two swimming pools for adults, children's pool, children's area, gym, sports area and spa, bicycle parking and vehicle parking area -700 meters to La Mata Beach, 10 minutes walking -In front of Torremarina Shopping Center with Mercadona, restaurants, cafes and other shops Torrevieja is a Spanish town in the province of Alicante, on the Costa Blanca. It is known for its typically Mediterranean climate and coastline. It has boardwalks with resorts along its sandy beaches. The small Museum of the Sea and Salt houses exhibitions on the fishing and salt history of the city. In the interior, the

Lagunas de La Mata-Torrevieja Natural Park has trails and two salty lagoons, one pink and the other green. Alicante airport located 40 minutes away and Murcia airport about 1 hour away.



VIEW	CLIMATISATION	PARKING PAS. CAR	ZONES
<ul style="list-style-type: none">Panoramico	<ul style="list-style-type: none">Central	: 1	<ul style="list-style-type: none">Gymnasio
JARD RIVIÈRE ET TERRASSES N <ul style="list-style-type: none">clôturesJard RIVER n privée	EXTRA <ul style="list-style-type: none">Elevator		

PROPERTY GALLERY













BAHIA DE ALICANTE
TEL: 90 10 00 00 11 22 33











"OUR EXPERIENCE IS YOUR GUARANTEE"