



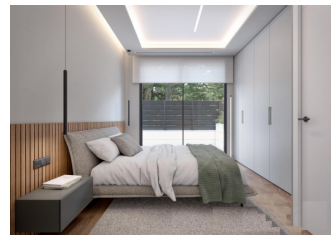
REF: # 12038

TORRE PACHECO (SANTA ROSALIA LAKE AND LIFE RESORT)



INFO

PRIX:	1.300.000 €
TYPE:	Villa
CITY:	Torre Pacheco (Santa Rosalia Lake and Life Resort)
CHAMBRES:	3
Ba ENFANTS:	3
Built (m2):	365
pas (m2):	394
Terrasse (m2):	258
A ENFANTS:	-
de plante:	-
MESSAGE	-



DESCRIPTION

NEW BUILD VILLAS IN PRIVATE GATED RESORT IN PROVINCE OF MURCIA New Build villas in private gated resort in the Murcia region, surrounded by excellent golf courses and just 10 minutes from the sandy beaches of the Mar Menor Sea. Villas build over of 2 floors and has 3 bedrooms, 3 bathrooms, open plan kitchen and living-dining room, fitted wardrobes, basement, terrace, private solarium with the pool and private garden with the pool, parking space for 2 vechiles. Located in a private gated resort, with a main access entrance and 24 hours security. The resort is designed around an impressive 126.000 m2 green area. It comprises walking and cycling paths, sport facilities, paddle and tennis courts, a mini-golf course, gardens, dog parks, leisure areas, clubhouse.... Also in the central area is the jewel of the resort, a crystal-clear artificial lake of almost 17.000m2 of water surface, surrounded by white sandy beaches and palm trees, bringing a piece of the Caribbean

to the Murcia Region. There are 2 islands in the lake, one of them has its own bar, there are also “beach Chiringuitos” spread around the lake. The resort is strategically located less than 4 km from the beach and the town of Los Alcázares, where you can practice various water sports, surrounded by several golf courses and the city of Cartagena less than 15 minutes by car and 22 km from Murcia airport, therefore having a wide cultural, gastronomic and sports offer within reach.



VIEW

- Panoramico

CLIMATISATION

- Central

PARKING PAS. CAR

: 1

**JARD RIVIÈRE ET
TERRASSES N**

- clôtures
- Jard RIVER n privée

PROPERTY GALLERY







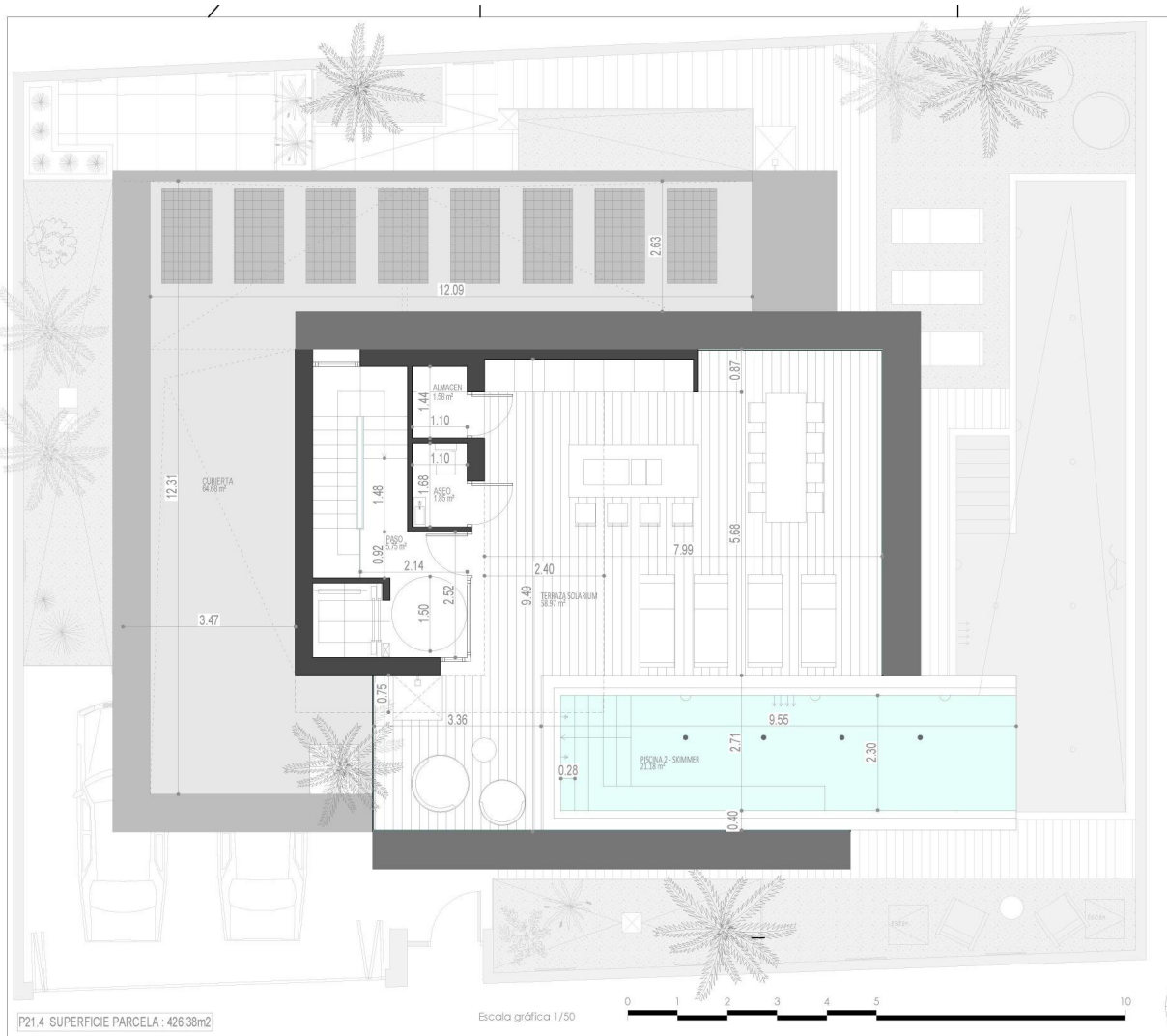












P21.4 SUPERFICIE PARCELA: 426.38m²

Escala gráfica 1/50



An/Al= 420 / 594 (0.25m²)



An/Al= 420 / 594 (0,25m²)





"OUR EXPERIENCE IS YOUR GUARANTEE"