



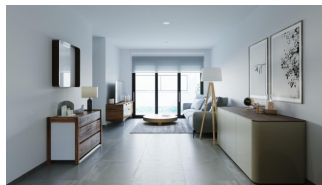
REF: # 12019

TORRE PACHECO (TORREPACHECO)



INFO

| | |
|-------------------------|------------------------------|
| PRIX: | 284.900 € |
| TYPE: | Maison |
| CITY: | Torre Pacheco (Torrepacheco) |
| CHAMBRES: | 2 |
| Ba ENFANTS: | 2 |
| Built (m2): | 99 |
| pas (m2): | 139 |
| Terrasse (m2): | 97 |
| A ENFANTS: | - |
| de plante: | - |
| MESSAGE | - |



DESCRIPTION

NEW BUILD RESIDENTIAL IN TORRE-PACHECO New build development of 8 townhouses and quads located in Torre-Pacheco. Modern properties with 2 bedrooms and 2 bathrooms, open plan kitchen with living room, fitted wardrobes, terrace, private solarium, garden with the pool and parking space. These exclusive homes are designed with elegant and functional interiors, fully equipped kitchens, electrical appliances included. The bathrooms have a vanity unit with washbasin and light. The bedrooms include lined wardrobes with drawer units and each property has pre-installation for ducted air conditioning. The exteriors are no less impressive, including a private swimming pool and a large solarium with summer kitchen so you can enjoy the sun all year round. In addition, the properties have pre-installation for electric car chargers. Located next to Club de Golf, Torre Pacheco, where you will find all amenities including bars, restaurants, supermarkets and banks and a 15min drive to the lovely beaches of the Mar Menor. Torre Pacheco is surrounded by award winning golf courses and the whole region is regarded as one of the healthiest places to be in Spain. This ideal location gives you so much more for your money. Within walking

distance to local amenities and many bars and restaurants. Motorway network nearby to enable you to travel to other areas quickly and easily. Murcia international airport is 20 minutes away.



VIEW

- Panoramico

CLIMATISATION

- Central

PARKING PAS. CAR

: 1

JARD RIVIÈRE ET
TERRASSES N

- clôtures
- Jard RIVER n privée











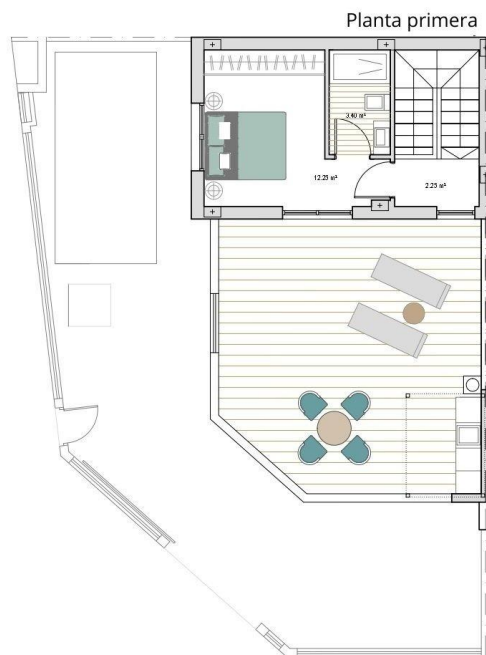
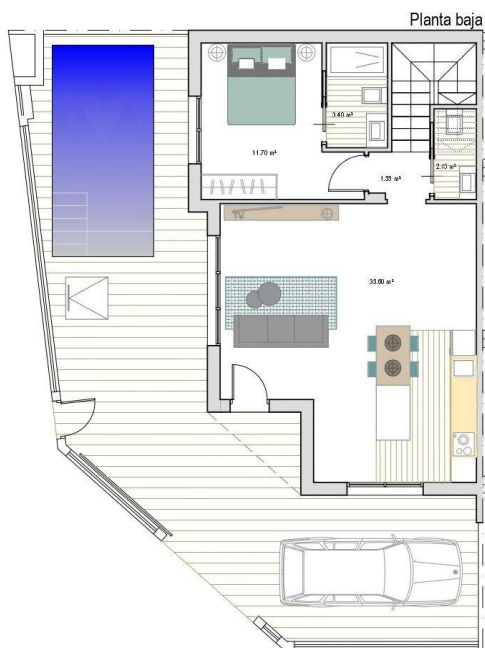






VIVIENDA 5

| | |
|------------------------|-----------------------------|
| Sup. Construida | 99'05 m² |
| Sup. Jardín: | 59'12 m ² |
| Sup. Piscina: | 12'00 m ² |
| Sup. Solarium: | 38'55 m ² |
| TOTAL: | 208'72 m² |
| Sup. Parcela: | 139.47 m ² |



"OUR EXPERIENCE IS YOUR GUARANTEE"