



REF: # 11969

TORREVIEJA (LOS BALCONES)



INFO

PRIX:	279.900 €
TYPE:	Appartement
CITY:	Torre Vieja (Los Balcones)
CHAMBRES:	2
Ba ENFANTS:	2
Built ( m2 ):	69
pas ( m2 ):	-
Terrasse ( m2 ):	56
A ENFANTS:	
de plante:	-
MESSAGE	-



DESCRIPTION

NEW BUILD RESIDENTIAL APARTMENT, LOS BALCONES, TORREVIEJA - Special offer, included in the price, White Goods, A/C, Spotlights and exterior lights, Shower screen in both bathrooms and Pergola for top floors with 2.2Kw solar panels. This 69m2 apartment consists of 2 bedrooms, 2 bathrooms, open lounge / Kitchen & Dining area, private 56m2 terrace, communal pool and gardens. Discover the perfect harmony between luxury and comfort with spectacular views of the pink lagoon of Torre Vieja, creating a unique experience where nature becomes an integral part of your daily life. The common areas are an extension of your own private oasis. Immerse yourself in our infinity pool while enjoying panoramic views of the pink lagoon, play with the little ones in the playground, or stroll through the landscaped green areas. Strategically nestled, places you minutes away from the beaches of Torre Vieja, the bustling Zenia Boulevard shopping center, and a variety of amenities such as supermarkets, pharmacies, and restaurants. The proximity to golf courses and the highway exit to Alicante Airport (60km drive) ensures easy access to everything you love. These properties are more than a home; it is a lifestyle that embraces natural beauty, modern

comfort, and convenience. Exceptional residential is the perfect place to live the life you've always imagined. Welcome to new residential, where each day is a masterpiece of luxury and serenity!

## CERTIFICAT ÉNERGÉTIQUE



## STYLE

- moderne
- contemporain

## VIEW

- Panoramico

## CLIMATISATION

- Central

## DISTANCE :

Beach : 200 m

aéroport: 60 Km

: 3 Km

## MEUBLÉ

- Vide

## PARKING PAS. CAR

: 1

## ÉTAGE

- tuiles
- Stone

## CUISINE

- cuisine

## JARD RIVIÈRE ET TERRASSES N

- Terrasse ouverte
- Feux extérieurs
- Palm
- Playground
- Paysage
- clôtures
- Jard RIVER Communauté

## EXTRA

- intégré
- Alarme
- Porte de sécurité
- Double vitrage

PROPERTY GALLERY











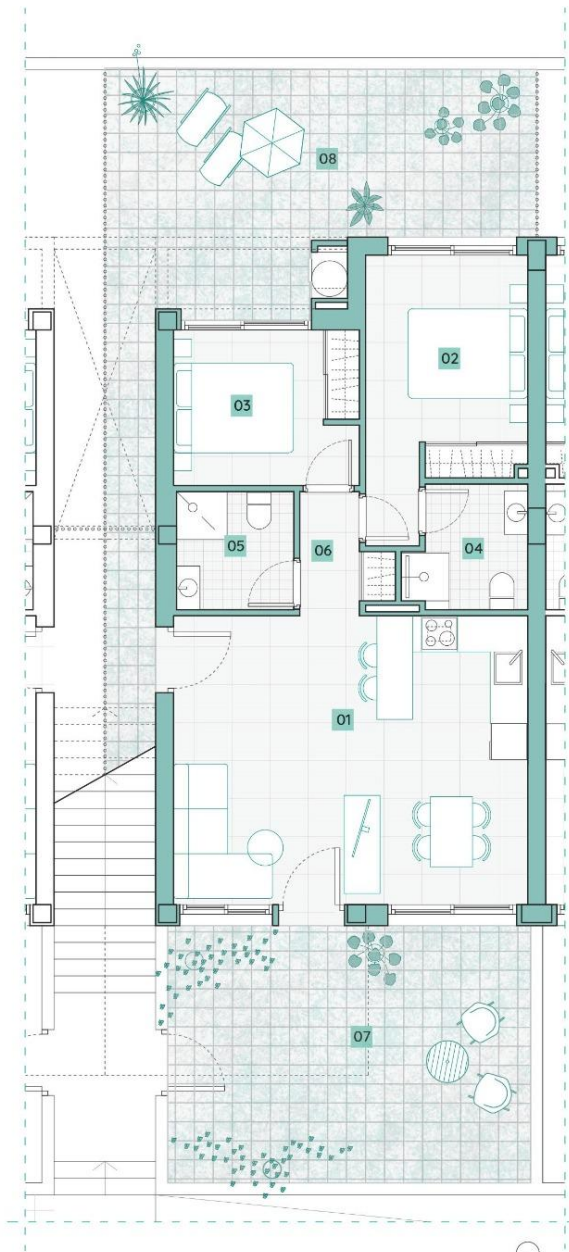






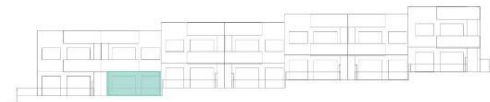
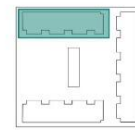






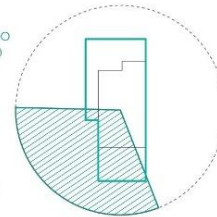
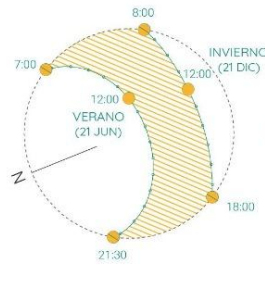
## vivienda 03

Ubicación en el residencial/  
Location in the residential



Estudio de soleamiento/Sunlight study

Análisis de vistas/Views study



### PLANTA BAJA/GROUND FLOOR

Superficies útiles/Useful surfaces

01	Salón-Comedor-Cocina/Living r.-Kitchen	28,50m <sup>2</sup>
02	Dormitorio1/Bedroom1	11,00m <sup>2</sup>
03	Dormitorio2/Bedroom2	8,10m <sup>2</sup>
04	Baño1/Bathroom1	4,00m <sup>2</sup>
05	Baño2/Bathroom2	3,85m <sup>2</sup>
06	Distribuidor/Corridor	2,60m <sup>2</sup>
07	Terraza1/Terrace1	26,00m <sup>2</sup>
08	Terraza2/Terrace2	30,00m <sup>2</sup>
Sup.útil total PB/GF total useful surface		114,05m <sup>2</sup>

### RESUMEN DE SUPERFICIES/ SUMMARY OF SURFACES

Superficie útil total/ Total useful surface	58,05m <sup>2</sup>
Superficie terrazas/ Terraces area	56,00m <sup>2</sup>
Superficie construida/Built area	69,30m <sup>2</sup>
Superficie parcela/Plot area	130,00m <sup>2</sup>



**"OUR EXPERIENCE IS YOUR GUARANTEE"**