



REF: # 11968

TORREVIEJA (LOS BALCONES)



INFO

PRIX:	319.900 €
TYPE:	Appartement
CITY:	Torrevieja (Los Balcones)
CHAMBRES:	2
Ba ENFANTS:	2
Built (m2):	69
pas (m2):	-
Terrasse (m2):	75
A ENFANTS:	-
de plante:	-
MESSAGE	-



DESCRIPTION

NEW BUILD RESIDENTIAL TOP FLOOR APARTMENT IN LOS BALCONES, TORREVIEJA - Special offer, included in the price, White Goods, A/C, Spotlights and exterior lights, Shower screen in both bathrooms and Pergola for top floors with 2.2Kw solar panels. Discover the perfect harmony between luxury and comfort with this 69m2 top floor apartment consisting of 2 bedrooms and 2 bathrooms and an open plan lounge and dining area. Each apartment offers spectacular views of the pink lagoon of Torrevieja, creating a unique experience where nature becomes an integral part of your daily life. The common areas are an extension of your own private oasis. Immerse yourself in our infinity pool while enjoying panoramic views of the pink lagoon, play with the little ones in the playground, or stroll through the landscaped green areas. Strategically nestled, places you minutes away from the beaches of Torrevieja, the bustling Zenia Boulevard shopping center, and a variety of amenities such as supermarkets, pharmacies, and restaurants. The proximity to golf courses and the highway exit to Alicante Airport ensures easy access to everything you love. This properties are more than a home; it is a lifestyle that embraces natural beauty, modern comfort, and

convenience. Exceptional residential is the perfect place to live the life you've always imagined. Welcome to new residential, where each day is a masterpiece of luxury and serenity! Just a 40km drive to Alicante Airport.



STYLE	VIEW	CLIMATISATION	DISTANCE :
<ul style="list-style-type: none">• moderne• contemporain	<ul style="list-style-type: none">• Panoramico	<ul style="list-style-type: none">• Central	Beach : 4 Km
			aéroport: 40 Km
			: 6 Km
MEUBLÉ	PARKING PAS. CAR	ÉTAGE	CUISINE
<ul style="list-style-type: none">• Vide	: 1	<ul style="list-style-type: none">• tuiles• Stone	<ul style="list-style-type: none">• cuisine
JARD RIVIÈRE ET TERRASSES N	EXTRA		
<ul style="list-style-type: none">• Playground• clôtures• Jard RIVER Communauté	<ul style="list-style-type: none">• intégré• Alarme• Porte de sécurité• Double vitrage		









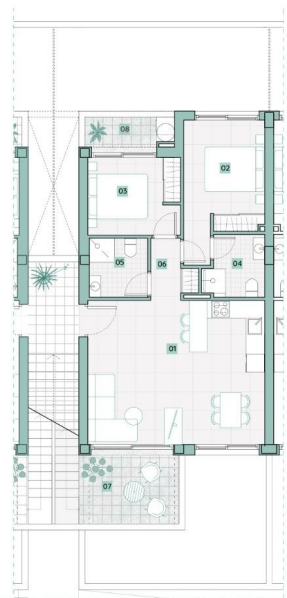










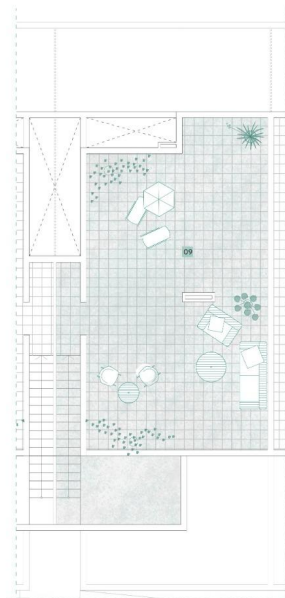


PLANTA PRIMERA/FIRST FLOOR

Superficies útiles/Useful surfaces

01	Salón-Comedor-Cocina/Living + Kitchen	28,50m ²
02	Dormitorio1/Bedroom1	11,00m ²
03	Dormitorio2/Bedroom2	8,10m ²
04	Baño1/Bathroom1	4,00m ²
05	Baño2/Bathroom2	3,85m ²
06	Distribuidor/Corridor	2,60m ²
07	Terraza1/Terrace1	7,70m ²
08	Terraza2/Terrace2	3,00m ²

Sup. útil total P1/P1 total useful surface **64,75m²**



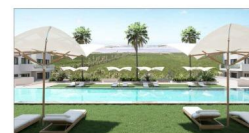
SOLARIUM/SOLARIUM

Superficies útiles/Useful surfaces

09	Solarium/Solarium	65,80m ²
----	-------------------	---------------------

Sup. útil total Solarium/Solarium total useful surface **65,80m²**

DN-A3 - v3/03



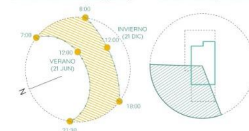
vivienda 04

Ubicación en el residencial/
Location in the residential



Estudio de solanamiento/Sunlight study

Análisis de vistas/Views study



RESUMEN DE SUPERFICIES/ SUMMARY OF SURFACES

Superficie útil total/ Total useful surface	58,05m ²
Superficie terrazas/ Terraces area	10,70m ²
Superficie solarium/ Solarium area	65,80m ²
Superficie construida/Built area	69,30m ²



"OUR EXPERIENCE IS YOUR GUARANTEE"