



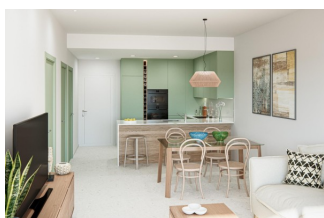
REF: # 11958

LOS ALCAZARES (SERENA GOLF)



INFO

PRIX:	249.000 €
TYPE:	Appartement
CITY:	Los Alcazares (Serena Golf)
CHAMBRES:	2
Ba ENFANTS:	2
Built (m2):	68
pas (m2):	-
Terrasse (m2):	23
A ENFANTS:	-
de plante:	-
MESSAGE	-



DESCRIPTION

NEW BUILD FRONTLINE APARTMENT, SERENA GOLF, LOS ALCAZARES - with sea views of the Mar Menor! This wonderful, modern 74m2 Apartment consists of 2 bedrooms, 2 bathrooms, open plan kitchen/dining/lounge area, fitted wardrobes, private 23m2 terrace, storage room and parking space. This New Build residential is composed of 32 apartments/penthouses and 9 exclusive villas all combining modern design, quality and functionality. The unbeatable location offers amazing views to golf and the Mar Menor sea, it is frontline of the prestigious golf course "La Serena Golf". This golf course is well renowned for its lakes and vegetation that interweave with the golf course. The water and lakes are present in 16 of the 18 holes, but all the course is designed to offer the golfer different strategies in each hole. Another aspect that makes this golf course unique is that it's connected by walking to the city centre, something impossible to find in other golf locations that allow us to enjoy the calm and the beauty of the area without refusing the access to the services that Los Alcázares offers. Residential located in Los Alcázares an exceptional area on the Costa Cálida at only 25 minutes from Murcia

airport and 55 min from Alicante airport. The area is connected through highway with the cities of Cartagena, Murcia and Alicante and the rest of the beaches of the Costa Cálida and the Costa Blanca.



STYLE <ul style="list-style-type: none">• moderne• contemporain	VIEW <ul style="list-style-type: none">• Panoramico	CLIMATISATION <ul style="list-style-type: none">• Central	DISTANCE : <div>Beach : 50 m</div> <div>aéroport: 40 Km</div> <div>: 3 Km</div>
PARKING PAS. CAR <div>: 1</div>	ÉTAGE <ul style="list-style-type: none">• tuiles• Stone	CUISINE <ul style="list-style-type: none">• cuisine	JARD RIVIÈRE ET TERRASSES N <ul style="list-style-type: none">• Terrasse couverte• clôtures• Jard RIVER n privée
EXTRA <ul style="list-style-type: none">• intégré• Alarme• Porte de sécurité• Double vitrage• stockage• Elevator			

PROPERTY GALLERY









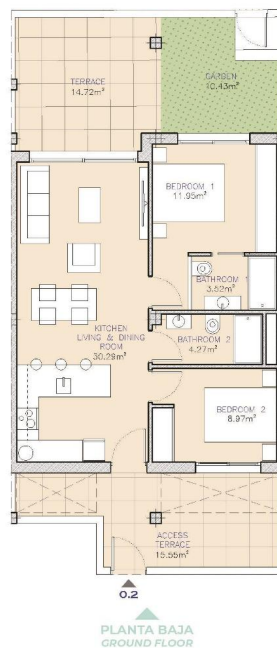
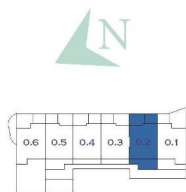






APART. 0.2

SUPERFICIE CONSTRUIDA	BUILT AREA	68,70 m ²
TERRAZA	TERRACE	14,72 m ²
JARDIN	GARDEN	10,43 m ²
ACCESO TERRAZA	ACCESS TERRACE	15,55 m ²
TOTAL		109,40 m ²







"OUR EXPERIENCE IS YOUR GUARANTEE"