



REF: # 11953

TORREVIEJA (PUNTA PRIMA)



#### INFO

**PRIX:** 424.000 €

**TYPE:**

**CITY:** Torrevieja  
(Punta Prima)

**CHAMBRES:** 2

**Ba ENFANTS:** 2

**Built ( m2 ):** 75

**pas ( m2 ):** -

**Terrasse ( m2 ):** 59

**A ENFANTS:** -

**de plante:** -

**MESSAGE** -



#### DESCRIPTION

**NEW BUILD RESIDENTIAL COMPLEX IN PUNTA PRIMA** New Build residential complex of 220 apartments in Punta Prima, Torrevieja. Apartments with 2 and 3 bedrooms and 2 bathrooms, open plan kitchen with living room, fitted wardrobes, all of them with large terraces. Ground floor apartments with garden and penthouses with solarium. All homes are delivered with an underground parking space. The residential has garden areas with swimming pools and paddle tennis court. Children can enjoy their own children's pool, as well as a children's play area. Punta Prima, located just 5 km from Torrevieja, is characterized by good communication and health infrastructures, the proximity to Alicante airport, and the number of services open throughout the year. Just 10 km away we can find the golf courses of Villamartín, Campoamor, Las Ramblas, Las Colinas and Lo Romero, as well as the commercial centres of La Zenia and Habaneras.

#### CERTIFICAT ÉNERGÉTIQUE



VIEW	CLIMATISATION	PARKING PAS. CAR	ZONES
<ul style="list-style-type: none"><li>Panoramico</li></ul>	<ul style="list-style-type: none"><li>Central</li></ul>	: 1	<ul style="list-style-type: none"><li>Gymnasio</li></ul>
JARD RIVIÈRE ET TERRASSES N	EXTRA		
<ul style="list-style-type: none"><li>clôtures</li></ul>	<ul style="list-style-type: none"><li>Elevator</li></ul>		



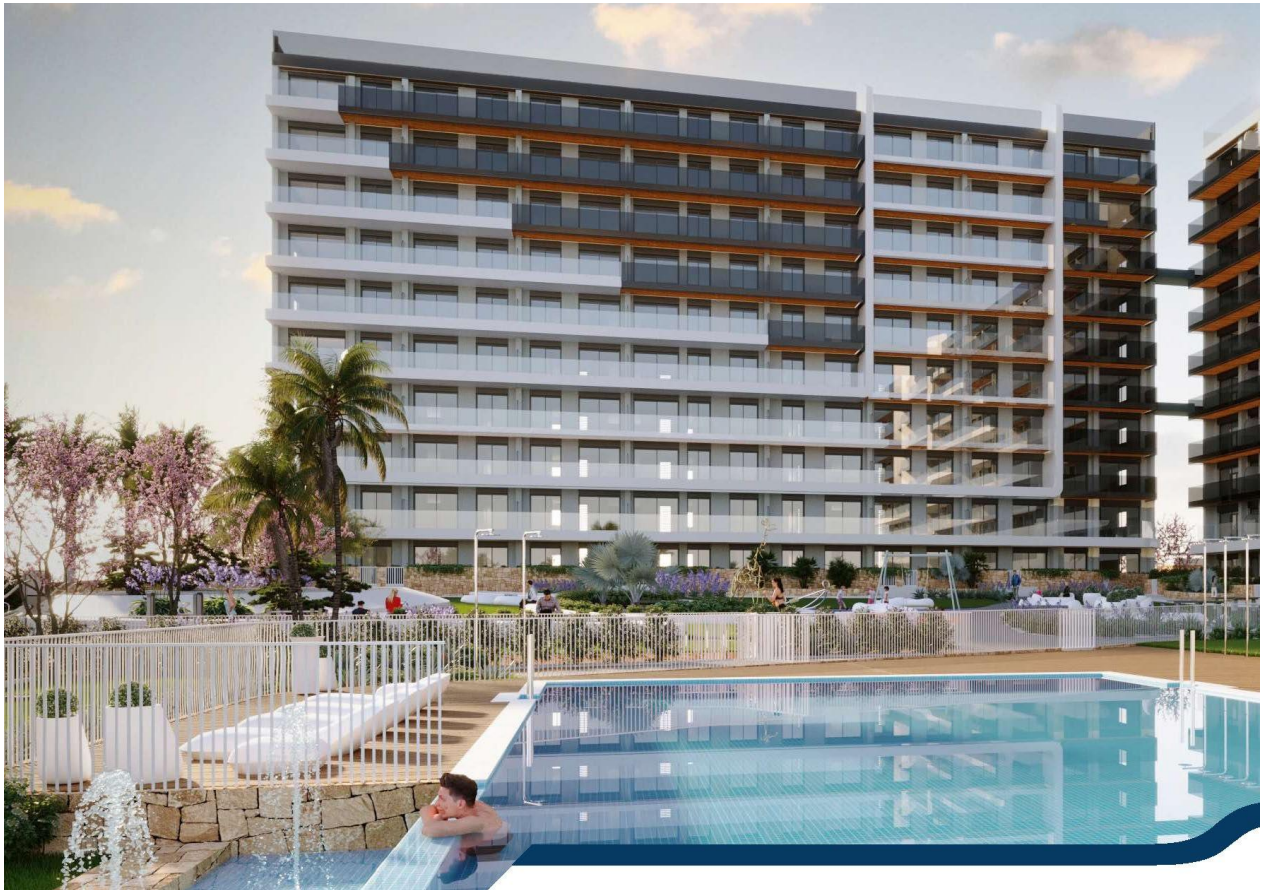




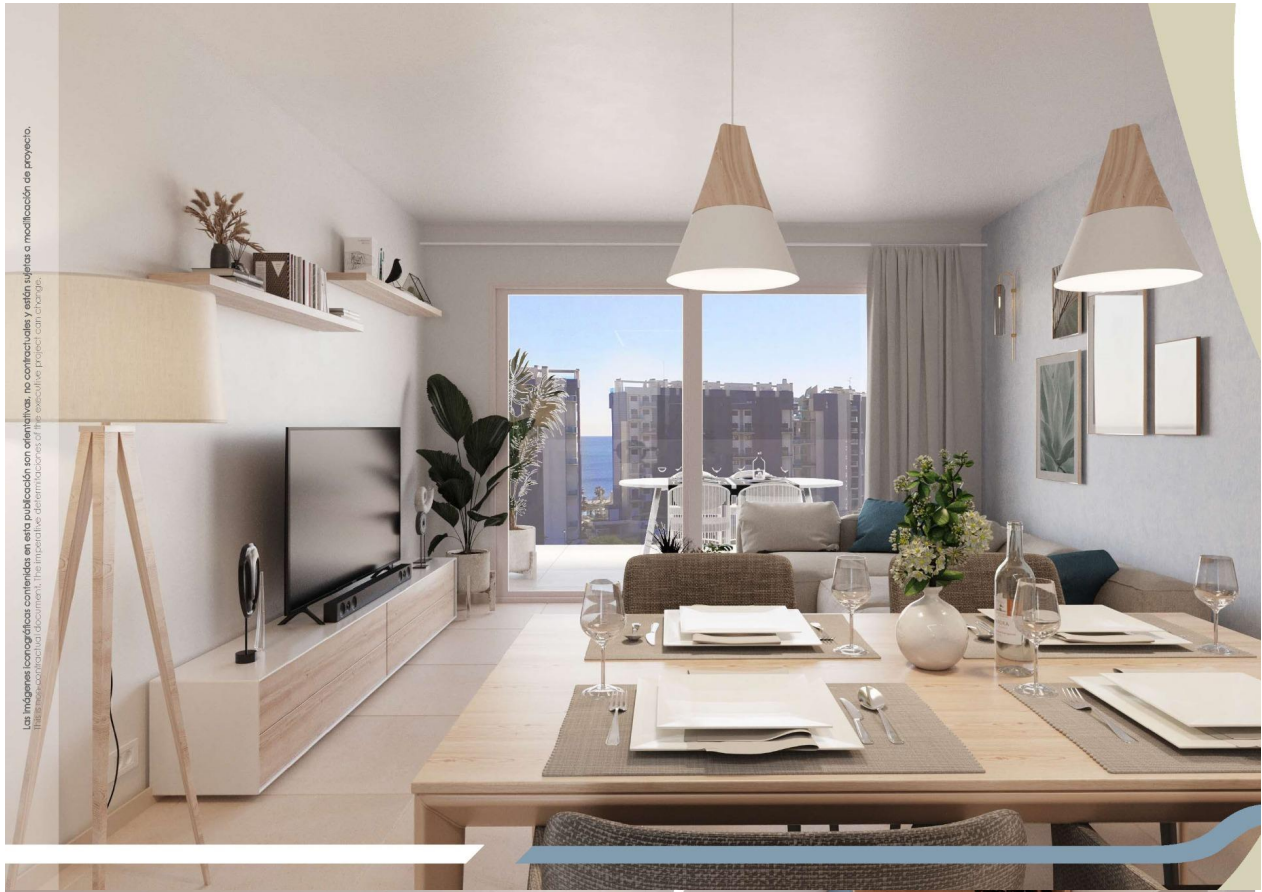


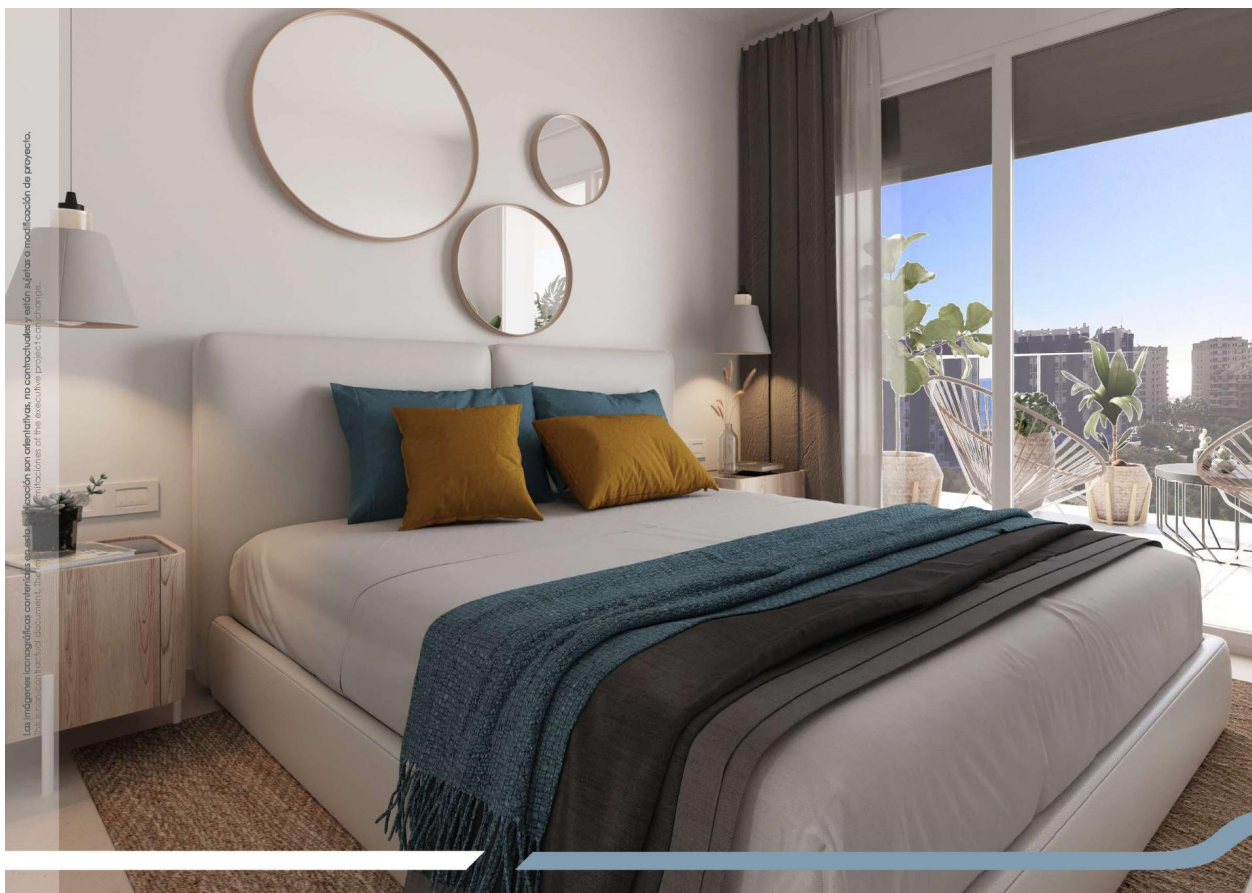
Los planos y fotografías publicadas en esta publicación son orientativos, no vinculantes y están sujetos a cambios sin previo aviso. The plans and photographs published in this publication are illustrative, not binding, and are subject to change without prior notice.











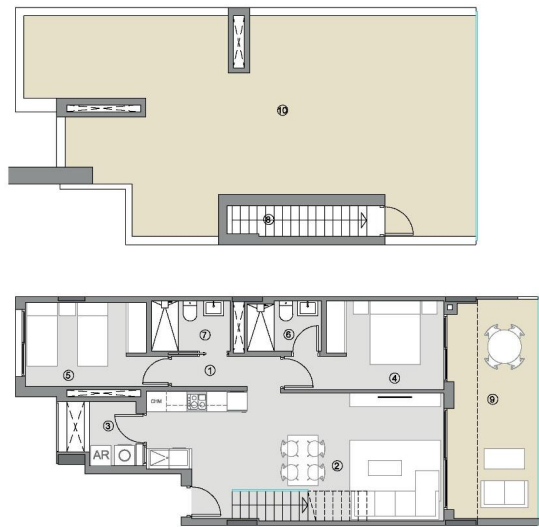






# VIVIENDA TIPO 1A

ESC 1-2-4-6 / STAIRS 1-2-4-  
7-8-9-10-11 / 6-7-8-9-10-11  
PP Y SOLARIUM / PP AND SOLARIUM



## SUPERFICIES ÚTILES / USEFUL AREA

SUPERFICIES ÚTILES INTERIORES / USEFUL INTERIOR AREA	
1 PASO / HALLWAY	3.12 m²
2 ESTAR-COM-COCINA / KITCHEN-LIVING	31.54 m²
3 TENDERO (100%) / UTILITY ROOM	2.66 m²
4 DORMITORIO 01 / BEDROOM 01	10.47 m²
5 DORMITORIO 02 / BEDROOM 02	9.53 m²
6 BAÑO 01 / BATHROOM 01	3.22 m²
7 BAÑO 02 / BATHROOM 02	3.53 m²
8 ESCALERA / STAIRCASE	1.38 m²
	65.45 m²

## SUPERF. ÚTILES EXTERIORES / USEFUL EXTERIOR AREA

9 TERRAZA 01 (100%) / TERRACE 01	17.24 m²
10 SOLARIUM / SOLARIUM	71.10 m²
	88.34 m²

SUP. ÚTIL TOTAL/TOTAL USEFUL AREA 153.79 m²

## SUPERFIC. CONSTRUIDAS / BUILT AREA

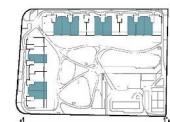
SUP. CONST. INTERIOR / INTERIOR BUILT AREA	74.95 m²
SUP. CONST. EXT. (50%) / EXT. BUILT AREA	1.43 m²
SUP. CONST. Z/C / BUILT AREA OF SHARED AREAS	10.03 m²
SUP. CONST. TOTAL/TOT. BUILT AREA	86.41 m²



ALZADO 1-1'



ALZADO 1-2'



0 1 2 3 4 5 m E:1/125

Las superficies indicadas lo son con carácter meramente informativo, no contractual, y pueden sufrir ligeras variaciones por necesidades técnicas del proceso de construcción.  
The indicated areas are for information purposes only, not contractual, and may vary slightly by technical requirements of the construction process.

"OUR EXPERIENCE IS YOUR GUARANTEE"