



REF: # 11776

LA MANGA DEL MAR MENOR (LA MANGA )



#### INFO

PRIX:	270.631 €
TYPE:	Maison
CITY:	La Manga Del Mar Menor (La Manga )
CHAMBRES:	3
Ba ENFANTS:	2
Built ( m2 ):	109
pas ( m2 ):	26
Terrasse ( m2 ):	30
A ENFANTS:	-
de plante:	-
MESSAGE	-



#### DESCRIPTION

**BEAUTIFUL TOWNHOUSES IN LA MANGA** This residential is located at km 14 of La Manga on a unique plot, on the first line of the Estacio canal and just 50 meters from the Mediterranean Sea. Unbeatable for its situation, just 800 meters from the port of Tomás Maestre, where we will find a select leisure area with bars, cafes, restaurants, shops, supermarkets, pharmacies, banks, etc. This project have 28 magnificent duplexes with 2 and 3 bedrooms. In Residencial the homes have been designed, to take advantage of every corner of the house, as well as the care in choosing the materials and their design La Manga del Mar Menor is a natural strip of land surrounded by two seas, the Mar Menor and the Mediterranean Sea. To this rarity you can add the multiple leisure and free time options, restaurants, supermarkets, medical centers, pharmacies, nautical sports centers, golf courses. La Manga is located

on the north coast of the Costa Calida and is a popular holiday destination for tourists. The narrow land strip separating the warm lagoon and the colder sea has a unique microclimate. It's one of the most exotic areas in Spain. Corvera airport is about 1 hour drive away and Alicante airport about 2 hours away.port about 2 hours away.



**VIEW**

- Panoramico
- Ocean

**CLIMATISATION**

- Central

**PARKING PAS. CAR**

: 1

**JARD RIVIÈRE ET  
TERRASSES N**

- clôtures
- Jard RIVER n privée











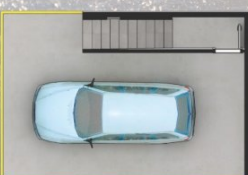






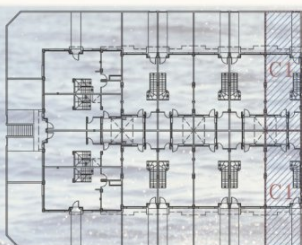
**The price includes the following extras:**

- Furnished kitchen (except appliances)
- Lighting throughout the house
- Air conditioning Cold/Warm
- Shower screen
- Closed Garage



**CUADRO SUPERFICIES**

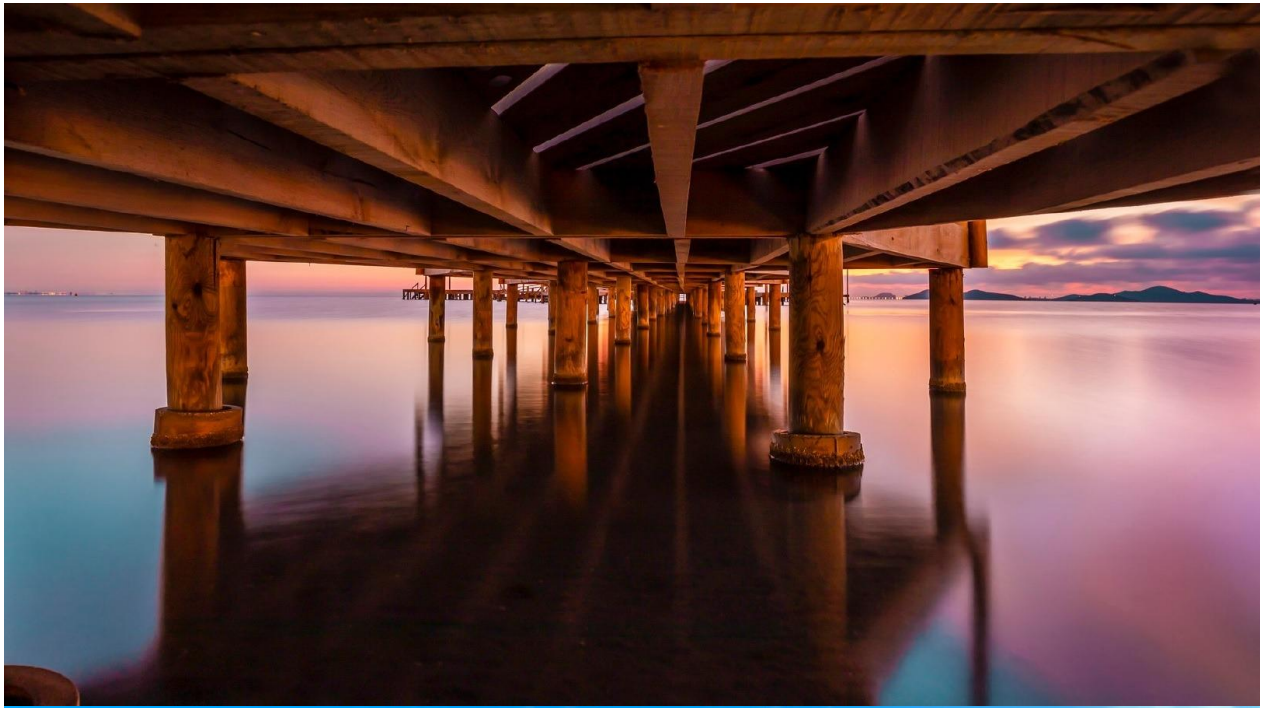
SUPE. ÚTIL PLANTA BAJA 39,10 M2	SUPE. ÚTIL PLANTA PISO 38,01 M2
SUPE. ÚTIL PLANTA TORREÓN 11,64 M2	SUPE. ÚTIL TOTAL 88,75 M2
SUPE. ÚTIL JARDÍN 26,25 M2	SUPE. CONSTR. TOTAL 109,83 M2



















***"OUR EXPERIENCE IS YOUR GUARANTEE"***