



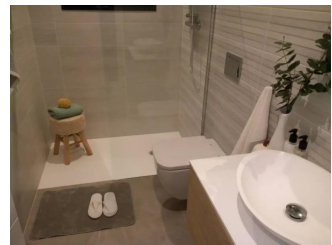
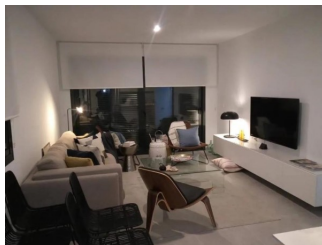
REF: # 11562

DAYA NUEVA



#### INFO

PRIX:	289.900 €
TYPE:	Villa (Semi detached)
CITY:	Daya Nueva
CHAMBRES:	3
Ba ENFANTS:	3
Built ( m2 ):	98
pas ( m2 ):	200
Terrasse ( m2 ):	15
A ENFANTS:	
de plante:	2
MESSAGE	-



#### DESCRIPTION

**\*KEY READY\* NEW BUILD SEMI-DETACHED VILLA IN DAYA NUEVA** - private pool and garden. This lovely 98m2 semi-detached villa is built over 2 floors and is situated in the Spanish village of Daya Nueva and consists of 3 bedrooms, 3 bathrooms, open plan kitchen with the lounge area, fitted wardrobes, private garden with the pool and parking space. This property is located only few minutes walk from the village centre with restaurants, bars, shops, town hall and an outside swimming pool. It is small idyllic and rural village surrounded by scenic countryside with orange and lemon groves. The beach of Guardamar is a 10 minute drive and Alicante airport only 25 minutes away. The Golf courses of La Marquesa golf in Ciudad Quesada and La Finca Golf In Algorfa are both within 10 minutes drive.

#### CERTIFICAT ÉNERGÉTIQUE



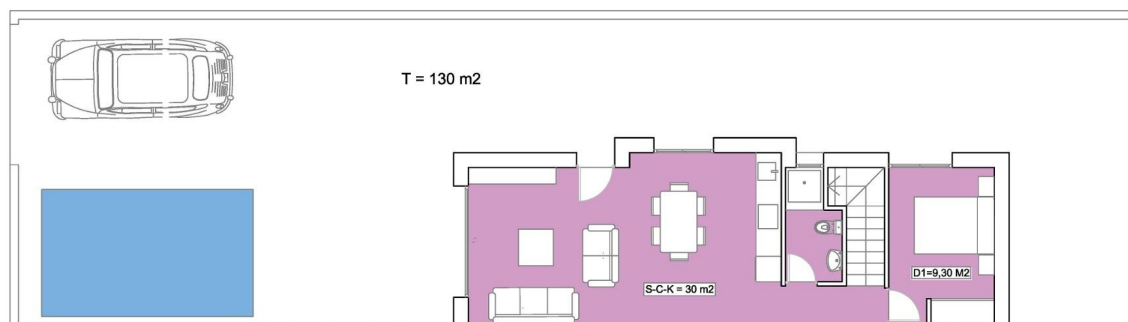
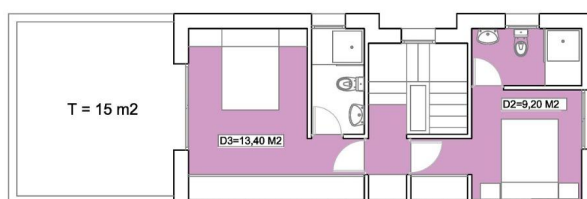
<b>STYLE</b> <ul style="list-style-type: none"><li>• moderne</li><li>• contemporain</li></ul>	<b>VIEW</b> <ul style="list-style-type: none"><li>• Panoramico</li></ul>	<b>CLIMATISATION</b> <ul style="list-style-type: none"><li>• Central</li></ul>	<b>DISTANCE :</b> <div>Beach : +10 Km</div> <div>aéroport: 40 Km</div> <div>: 2 Km</div>
<b>MEUBLÉ</b> <ul style="list-style-type: none"><li>• Vide</li></ul>	<b>PARKING PAS. CAR</b> <div>: 1</div>	<b>ÉTAGE</b> <ul style="list-style-type: none"><li>• tuiles</li><li>• Stone</li></ul>	<b>CUISINE</b> <ul style="list-style-type: none"><li>• cuisine</li></ul>
<b>JARD RIVIÈRE ET TERRASSES N</b> <ul style="list-style-type: none"><li>• Terrasse ouverte</li><li>• clôtures</li><li>• Jard RIVER n privée</li></ul>	<b>EXTRA</b> <ul style="list-style-type: none"><li>• intégré</li><li>• Alarme</li><li>• Porte de sécurité</li><li>• Double vitrage</li><li>• porte Videocamara</li></ul>		











PARCELA = 200 M<sup>2</sup>

SUP. CONSTRUIDA = 98 M<sup>2</sup>

TERRAZAS = 145 M<sup>2</sup>

PISCINA = 5 X 3 M<sup>2</sup>













***"OUR EXPERIENCE IS YOUR GUARANTEE"***