



REF: # 11531

TORRE PACHECO (ROLDAN)



INFO	
PRIX:	995.000 €
TYPE:	Villa
CITY:	Torre Pacheco (Roldan)
CHAMBRES:	3
Ba ENFANTS:	2
Built (m2):	199
pas (m2):	385
Terrasse (m2):	106
A ENFANTS:	-
de plante:	-
MESSAGE	-



DESCRIPTION

NEW BUILD VILLAS IN ROLDAN Modern New Build villas in Roldan , Torre Pacheco Villas of 199 m² build on the plots of of 385 m², 438 m² and 490 m². Villas has 3 bedrooms; two of them with complete bathroom. Kitchen furnished with top quality materials to be chosen by the owner, including electrical appliances, following an open concept with the dining room surrounded by large windows that provide throughout the day a pleasant light and direct access to the pool and private garden areas completely finished. Air conditioning (hot/cold) by ducts included. By taking care of the smallest details in the finishes, using the highest quality materials, personalised design and luxury without forgetting maximum comfort, we achieve the enjoyment of the homes both in summer and in the mild winter, making them habitable all year round. Garage for 1 vehicle and in addition, outside parking area for another vehicle, with separate entrance. Villas located close to the best golf courses, in the municipality of Torre Pacheco. This district has all the services that a place to live has to have: supermarkets, schools, medical centres, sports centres, pharmacies, etc... Amongst these schools is the

King's College British School of Murcia, which is only 8 minutes drive from our development. It is the only international school in the area inspected by an external body accredited by the British Ministry of Education for the inspection of British schools abroad. Not forgetting the proximity of the RM-19 motorway which connects our residential with Murcia, which is 30 minutes away and Corvera Airport (Murcia) which is 20 minutes away. Alicante airport is 1 hour away. To get to Cartagena it would take 25 minutes by car. There are also several shopping areas close by, the Dos Mares Shopping Centre in San Javier is 15 minutes drive and the Espacio Mediterraneo in Cartagena is 22 minutes away. The distance to the nearest beach which would be on the Mar Menor in Los Alcazares would be 18 km, which translates to 19 min by car.

CERTIFICAT ÉNERGÉTIQUE



VIEW

- Panoramico

CLIMATISATION

- Central

PARKING PAS. CAR

: 1

JARD RIVIÈRE ET TERRASSES N

- clôtures
- Jard RIVER n privée









VIVIENDAS N°2, N°3, N°4, N°5 Y N°6

SUPERFICIES CONTRUIDAS:

PLANTA BAJA:	111.15 m ²
PLANTA PRIMERA:	64.00 m ²
PLANTA GARAJE:	23.50 m ²
TOTAL CONSTRUIDA:	198.65 m²
TERRAZA:	78.00 m ²
TAMAÑO PISCINA:	8.00 x 3.00
SUPERFICIE PARCELA:	385.08 m²

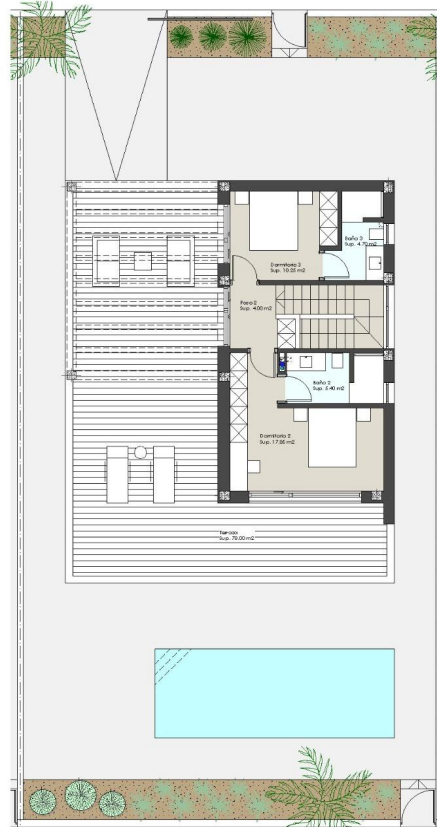


Escala Gráfica

La información contenida e



PLANTA BAJA



PLANTA PRIMERA



"OUR EXPERIENCE IS YOUR GUARANTEE"