

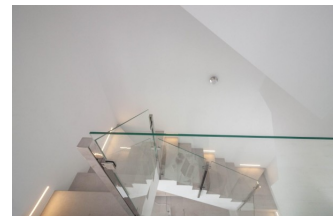
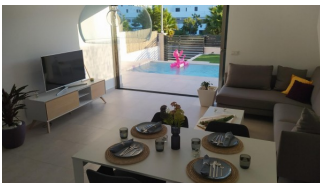


REF: # 11466

ORIHUELA COSTA (VILLAMARTIN PAU-8)



INFO	
PRIX:	499.900 €
TYPE:	Villa
CITY:	Orihuela Costa (Villamartin Pau-8)
CHAMBRES:	3
Ba ENFANTS:	4
Built (m2):	185
pas (m2):	240
Terrasse (m2):	81
A ENFANTS:	-
de plante:	-
MESSAGE	-

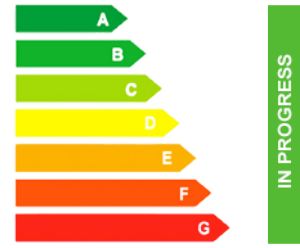


DESCRIPTION

MODERN NEW BUILD VILLAS IN VILLAMARTIN New build villas with 2 models to choose from: 1 or 2 floors. All with 3 bedrooms and 2 or 3 bathrooms, private swimming pool, parking inside the plot and private solarium. The plot is fenced around the perimeter with access gates for vehicles and pedestrians. The surface of the plot is divided between the parking area finished with printed concrete, a lawn area and a paved area with the same flooring as inside. The interior carpentry has a high security armoured entrance door. Both the interior doors and the wardrobes are lacquered in white. In the kitchen we find furniture finished in white and quartz worktop in a colour matching the floor of the house. In the bathrooms there are shower trays and integrated glass screens as well as bathroom furniture and wall-mounted sanitary ware. The villa has pre-installations for ducted air conditioning. These fantastic properties are located close to Villamartin Plaza and the Villamartin golf course, where you will find numerous bars and restaurants, supermarkets, banks, a taxi rank and the local bus stop. The beaches of Orihuela Costa are only a 5 minute drive away, as is the new Zenia Boulevard shopping

centre (the largest shopping centre in the province of Alicante). The airports of Alicante and Murcia are a 45 minute drive away.

CERTIFICAT ÉNERGÉTIQUE



VIEW

- Panoramico

CLIMATISATION

- Central

PARKING PAS. CAR

: 1

JARD RIVIÈRE ET TERRASSES N

- clôtures
- Jard RIVER n privée

PROPERTY GALLERY

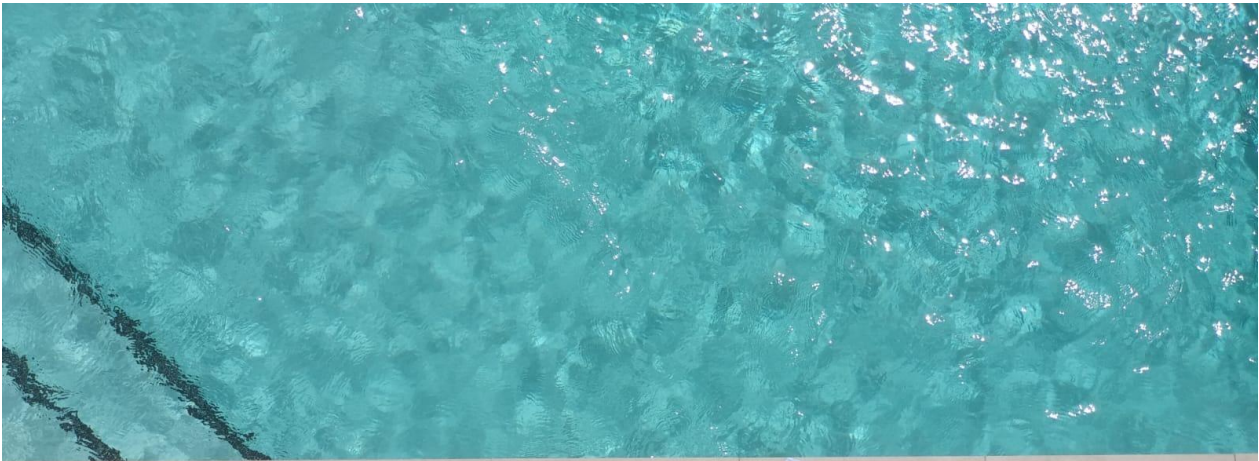




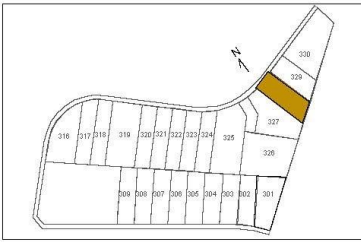












PLOT	AREA (SIZE)
328	240 m ²

FIRST FLOOR

Lounge	43,57 m ²
Stairs	4,52 m ²
Bathroom	5,44 m ²

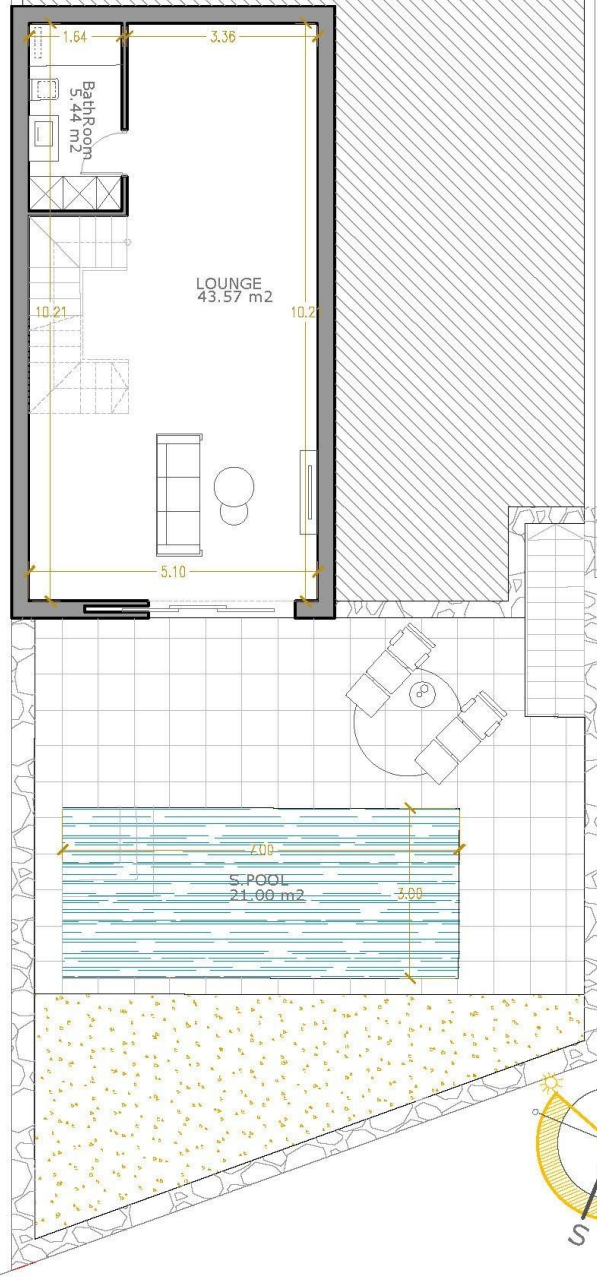
SECOND FLOOR

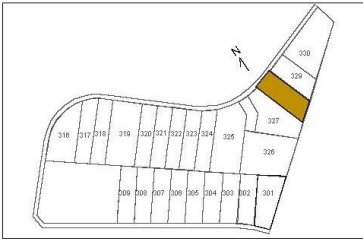
Living-kitchen	40,47 m ²
Bathroom 1	5,44 m ²
Stairs	4,52 m ²
Terrace	35,57 m ²

THIRD FLOOR

Bedroom 1	16,51 m ²
Bathroom 2	3,90 m ²
Corridor	4,29 m ²
Bathroom 2	3,60 m ²
Bedroom 2	9,31 m ²
Bedroom 3	9,64 m ²
Terrace	5,60 m ²

185,00 m² BUILT
 + 46,00 m² SOLARIUM
 + 35,00 m² TERRACE
266,00 m²





PLOT	AREA (SIZE)
328	240 m ²

FIRST FLOOR

Lounge	43,57 m ²
Stairs	4,52 m ²
Bathroom	5,44 m ²

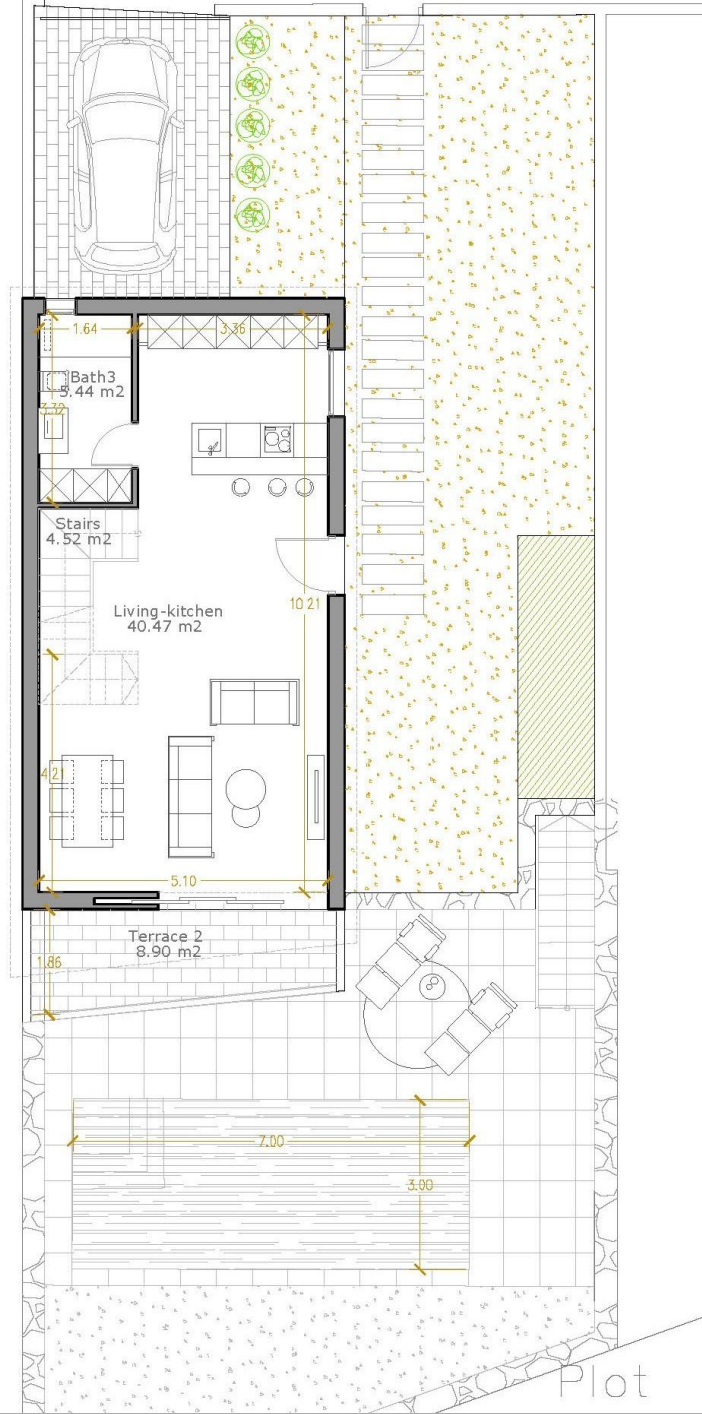
SECOND FLOOR

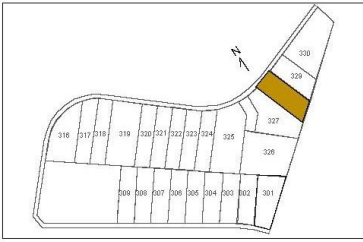
Living-kitchen	40,47 m ²
Bathroom 1	5,44 m ²
Stairs	4,52 m ²
Terrace	35,57 m ²

THIRD FLOOR

Bedroom 1	16,51 m ²
Bathroom 2	3,90 m ²
Corridor	4,29 m ²
Bathroom 2	3,60 m ²
Bedroom 2	9,31 m ²
Bedroom 3	9,64 m ²
Terrace	5,60 m ²

185,00 m² BUILT
 + 46,00 m² SOLARIUM
 + 35,00 m² TERRACE
266,00 m²





PLOT	AREA (SIZE)
328	240 m ²

FIRST FLOOR

Lounge	43,57 m ²
Stairs	4,52 m ²
Bathroom	5,44 m ²

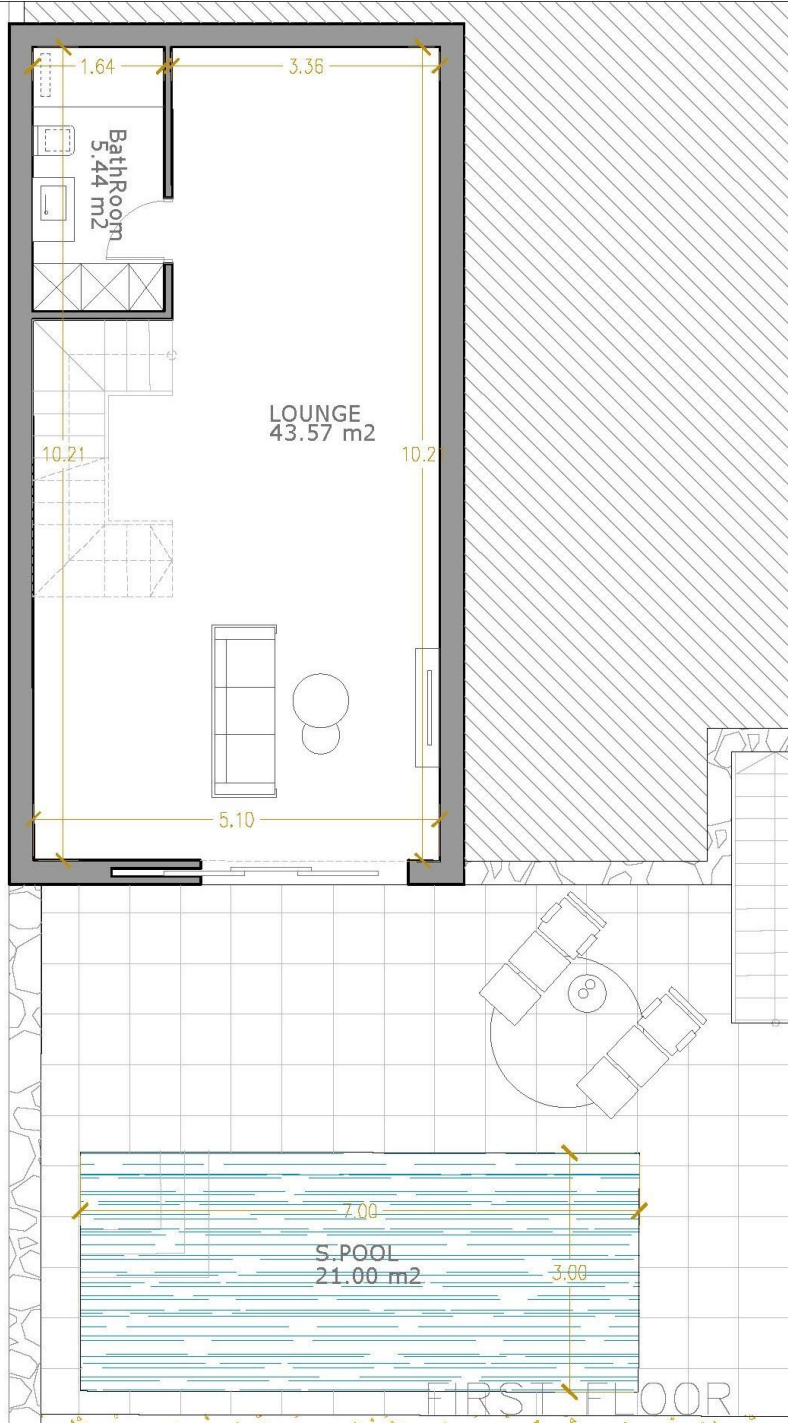
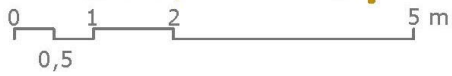
SECOND FLOOR

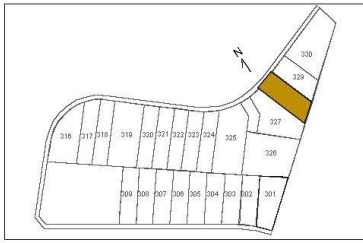
Living-kitchen	40,47 m ²
Bathroom 1	5,44 m ²
Stairs	4,52 m ²
Terrace	35,57 m ²

THIRD FLOOR

Bedroom 1	16,51 m ²
Bathroom 2	3,90 m ²
Corridor	4,29 m ²
Bathroom 2	3,60 m ²
Bedroom 2	9,31 m ²
Bedroom 3	9,64 m ²
Terrace	5,60 m ²

185,00 m² BUILT
 + 46,00 m² SOLARIUM
 + 35,00 m² TERRACE
266,00 m²





PLOT	AREA (SIZE)
328	240 m ²

FIRST FLOOR

Lounge	43,57 m ²
Stairs	4,52 m ²
Bathroom	5,44 m ²

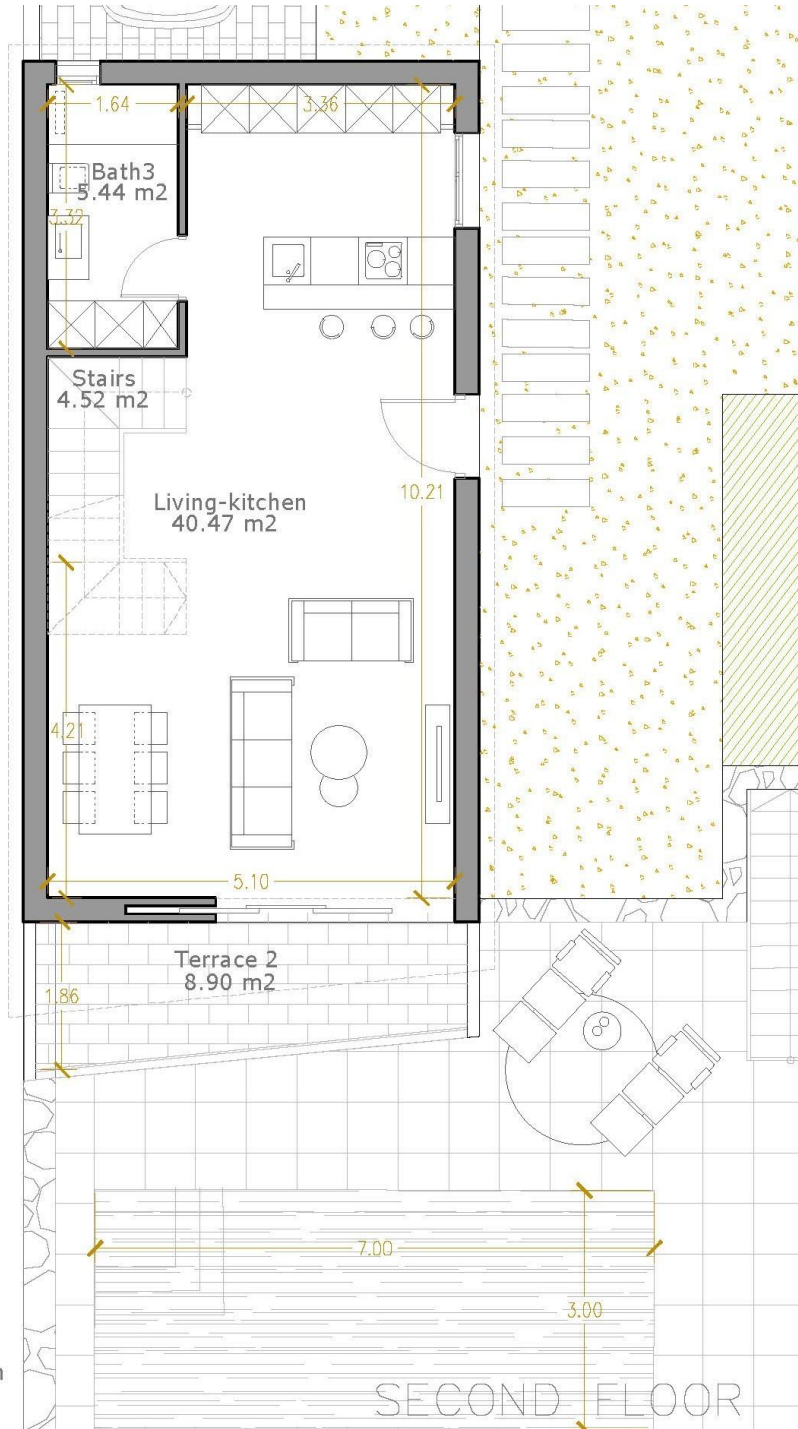
SECOND FLOOR

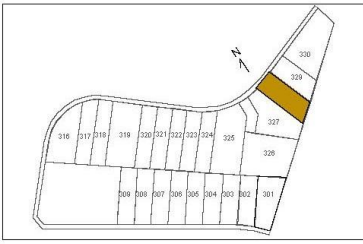
Living-kitchen	40,47 m ²
Bathroom 1	5,44 m ²
Stairs	4,52 m ²
Terrace	35,57 m ²

THIRD FLOOR

Bedroom 1	16,51 m ²
Bathroom 2	3,90 m ²
Corridor	4,29 m ²
Bathroom 2	3,60 m ²
Bedroom 2	9,31 m ²
Bedroom 3	9,64 m ²
Terrace	5,60 m ²

185,00 m² BUILT
 + 46,00 m² SOLARIUM
 + 35,00 m² TERRACE
266,00 m²





PLOT	AREA (SIZE)
328	240 m ²

FIRST FLOOR

Lounge	43,57 m ²
Stairs	4,52 m ²
Bathroom	5,44 m ²

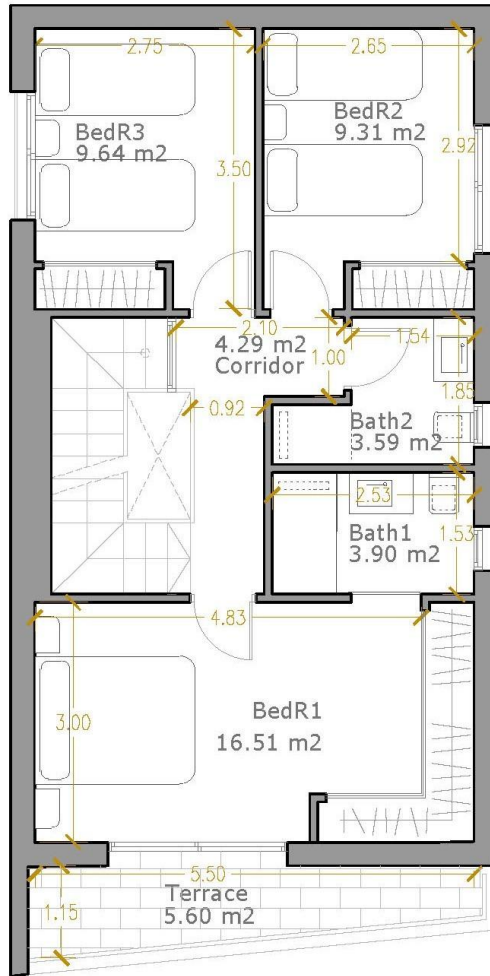
SECOND FLOOR

Living-kitchen	40,47 m ²
Bathroom 1	5,44 m ²
Stairs	4,52 m ²
Terrace	35,57 m ²

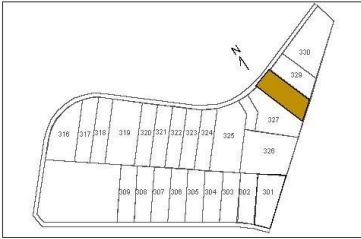
THIRD FLOOR

Bedroom 1	16,51 m ²
Bathroom 2	3,90 m ²
Corridor	4,29 m ²
Bathroom 2	3,60 m ²
Bedroom 2	9,31 m ²
Bedroom 3	9,64 m ²
Terrace	5,60 m ²

185,00 m² BUILT
 + 46,00 m² SOLARIUM
 + 35,00 m² TERRACE
266,00 m²



THIRD FLOOR



PLOT	AREA (SIZE)
328	240 m ²

FIRST FLOOR

Lounge	43,57 m ²
Stairs	4,52 m ²
Bathroom	5,44 m ²

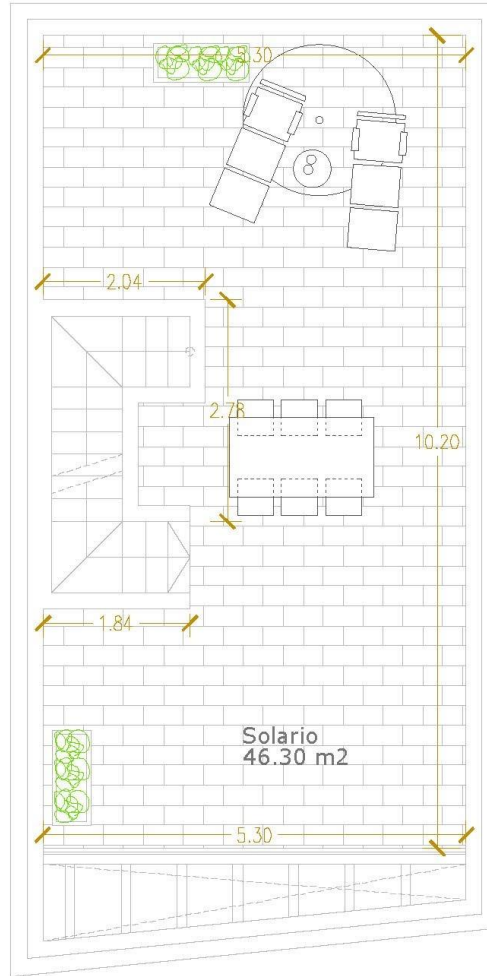
SECOND FLOOR

Living-kitchen	40,47 m ²
Bathroom 1	5,44 m ²
Stairs	4,52 m ²
Terrace	35,57 m ²

THIRD FLOOR

Bedroom 1	16,51 m ²
Bathroom 2	3,90 m ²
Corridor	4,29 m ²
Bathroom 2	3,60 m ²
Bedroom 2	9,31 m ²
Bedroom 3	9,64 m ²
Terrace	5,60 m ²

185,00 m² BUILT
 + 46,00 m² SOLARIUM
 + 35,00 m² TERRACE
266,00 m²



SOLARIUM

"OUR EXPERIENCE IS YOUR GUARANTEE"