



REF: # 11461

ALICANTE (ALICANTE CITY CENTRE)



#### INFO

|                  |                                 |
|------------------|---------------------------------|
| PRIX:            | 458.000 €                       |
| TYPE:            | Appartement                     |
| CITY:            | Alicante (Alicante City Centre) |
| CHAMBRES:        | 4                               |
| Ba ENFANTS:      | 2                               |
| Built ( m2 ):    | 128                             |
| pas ( m2 ):      | -                               |
| Terrasse ( m2 ): | 8                               |
| A ENFANTS:       | -                               |
| de plante:       | -                               |
| MESSAGE          | -                               |



#### DESCRIPTION

**NEW BUILD APARTMENTS IN ALICANTE CITY** New build residential located close to the port of Alicante, walking distance to the sea and to the city centre. This residential offers 3 or 4 bedroom apartments for everyone to enjoy their own space. So that you enjoy maximum comfort in your new home, the house will be equipped with a complete installation of hot-cold air conditioning through ducts with drive in living room and bedrooms The elevators with access from the garage to all the floors of the residential. The doors will be automatic and stainless steel in the cabin, and will be equipped with alarm and telephone service for emergencies. Residential includes a community garage, storage rooms, gym and exclusive outdoor infinity pool located on the roof of the building. From the heights you will enjoy a pleasant bath while contemplating incredible views over the sea and the Alicante skyline. Apartments located in a privileged place, surrounded of schools and

parks, with excellent communications and services that will make your life much more comfortable. Located in the middle of the Costa Blanca, Alicante is one most important tourist destinations in the Spanish east coast. The many golf courses, along with the tranquil waters of the Mediterranean Sea, are part of the appeal of this beautiful harbour city, which sits at the foot of the Castle of Santa Barbara, a silent witness to the numerous civilisations to have settled here. The coastline is, without a doubt, the favourite recreational spot for the people of Alicante. The Explanada de España promenade, located across from the port, is a lively boulevard dotted with terraces and pavement cafes.



STYLE

- moderne
- contemporain

VIEW

- Panoramico

## PROPERTY GALLERY







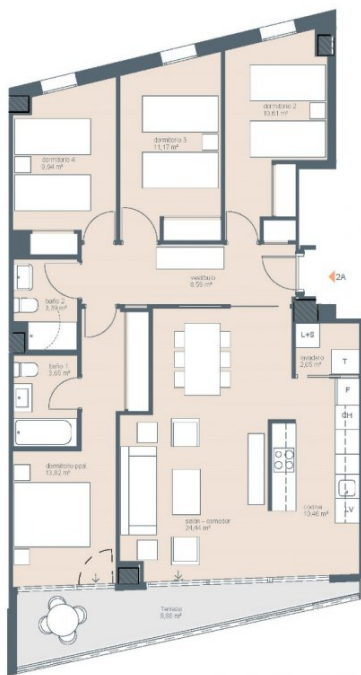












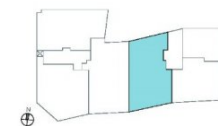
Planta 2ª. Esc 2. Pta A



Superficies:

Vivienda 4d

|                                      |          |
|--------------------------------------|----------|
| Superficie útil interior             | 98,12m²  |
| Superficie útil terrazas             | 8,86m²   |
| Superficie construida interior       | 111,41m² |
| Superficie construida incluidas ZZOC | 126,95m² |



V03

Documentación informativa sin carácter contractual y meramente ilustrativa sujeta a modificaciones necesarias por exigencias de orden técnico, jurídico o comercial de la dirección facultativa o autoridad competente. Las infografías de las fachadas, elementos comunes y restantes espacios orientativos y podrán ser objeto de verificación o modificación en los proyectos técnicos. El mobiliario de las infografías interiores no está incluido, los acabados, calidades, colores, equipamiento, aparatos sanitarios y muebles de cocina son una aproximación meramente representativa y el equipamiento de las viviendas será el indicado en la correspondiente memoria de calidades. La certificación energética se corresponde con la establecida en proyecto en trámite.

Toda la información y entrega de documentación se llevará a cabo conforme a lo dispuesto en el Real Decreto 515/1089 y demás normas que pudieran complementarlo ya sean de carácter estatal o autonómico.

"OUR EXPERIENCE IS YOUR GUARANTEE"