



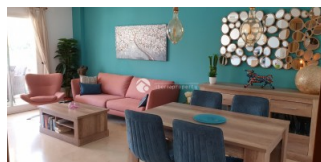
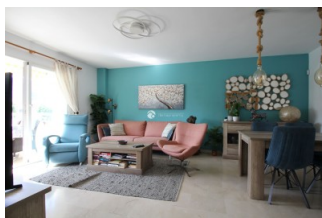
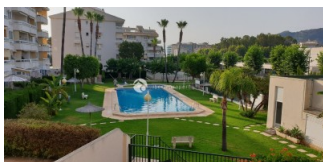
REF: # 11434

ALBIR (ALBIR CENTRO)



INFO

:	Check
TYPE:	Appartement
CITY:	Albir (Albir centro)
CHAMBRES:	2
Ba ENFANTS:	2
Built (m2):	90
pas (m2):	-
Terrasse (m2):	12
A ENFANTS:	2002
de plante:	2
lits	2



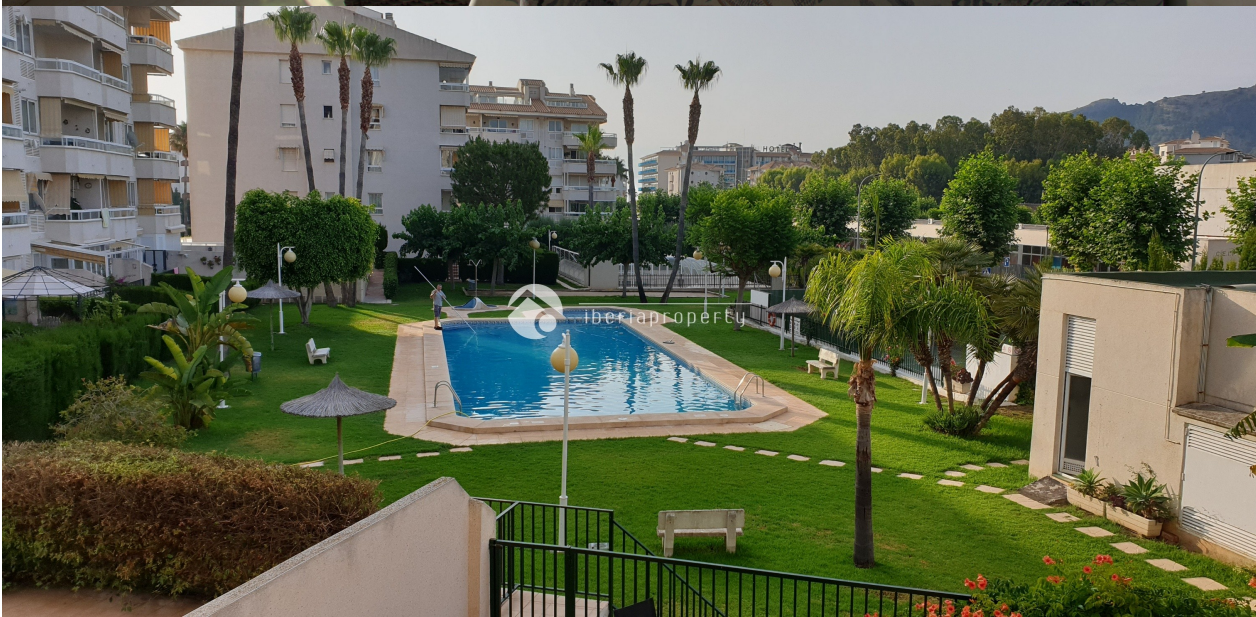
DESCRIPTION

FOR RENT You walk in to a nice spacious hall where on your left, you can enter the living room and kitchen, only separated by a breakfast bar. The modern living room has a nice sofa as well as a table and 4 chairs, modern Smart TV, which takes you to a sunny terrace with awning and also a table and some chairs to enjoy the spectacular views over the community swimming pools and gardens. The kitchen is practical and has all you might need such as an oven, fridge, ceramic hob, kettle, coffee machine and toaster. There is a laundry room next to the kitchen with an electric water heater and a washing machine, where owners leave the sun/beach chairs also for guests to use. Back again from the entrance hall, if you go to your right, you will find a bathroom with a walk-in shower, as well as the two bedrooms (both with airconditioning hot/cold). One bedroom has two single beds and the main bedroom has a double bed, a small balcony, built-in wardrobe and an ensuite bathroom with a bathtub. All rooms are spacious, modern and have been decorated in a nice style. The apartment has WIFI, alarm system and elevator. The building has well looked after communal gardens and two

swimming pools (indoor and outdoor) It is within walking distance to the beach as well as near bars, restaurants and also supermarkets.



STYLE	VIEW	CLIMATISATION	DISTANCE :
<ul style="list-style-type: none">contemporain	<ul style="list-style-type: none">une vue sur la montagne	<ul style="list-style-type: none">chambres	Beach : 500 m
			aéroport: 60 Km
			: 100 m
POSITION	ÉTAGE	CUISINE	JARD RIVIÈRE ET TERRASSES N
Sur	<ul style="list-style-type: none">tuiles	<ul style="list-style-type: none">cuisinecuisine équipéegranit	<ul style="list-style-type: none">Terrasse couverteTerrasse ouvertePalmPlaygroundPaysageclôturesgazonhayonJard RIVER Communauté
CHAUFFAGE	EXTRA		
<ul style="list-style-type: none">central au gaz	<ul style="list-style-type: none">intégréPorte de sécuritéDouble vitrageSatellite TVLaundryElevatorInternetconcierge		

















"OUR EXPERIENCE IS YOUR GUARANTEE"