



REF: # 11378

TORREVIEJA



INFO

PRIX:	159.000 €
TYPE:	Appartement
CITY:	Torrevieja
CHAMBRES:	1
Ba ENFANTS:	1
Built (m2):	35
pas (m2):	-
Terrasse (m2):	2
A ENFANTS:	-
de plante:	-
MESSAGE	-



DESCRIPTION

NEW BUILD APARTMENTS IN TORREVIEJA New Build apartments and penthouses in Torrevieja. New Build residential of 12 exclusive 1 and 2 bedrooms, 1 and 2 bathrooms apartments and penthouses, with open plan kitchen and living area, large, fitted wardrobes, fully equipped bathrooms with underfloor heating. All motorised aluminium blinds. Armoured entrance door with security lock. Pre-installation of air conditioning and heating. New Build residential complex with modern design and high quality finishes has a beautiful communal solarium.

Torre Vieja is a Spanish town in the province of Alicante, on the Costa Blanca. It is known for its typically Mediterranean climate and coastline. It has boardwalks with resorts along its sandy beaches. The small Museum of the Sea and Salt houses exhibitions on the fishing and salt history of the city. In the interior, the Lagunas de La Mata-Torre Vieja Natural Park has trails and two salty lagoons, one pink and the other green. Alicante airport located 40 minutes away and Murcia airport about 1 hour away



VIEW

- Panoramico

CLIMATISATION

- Central

EXTRA

- Elevator















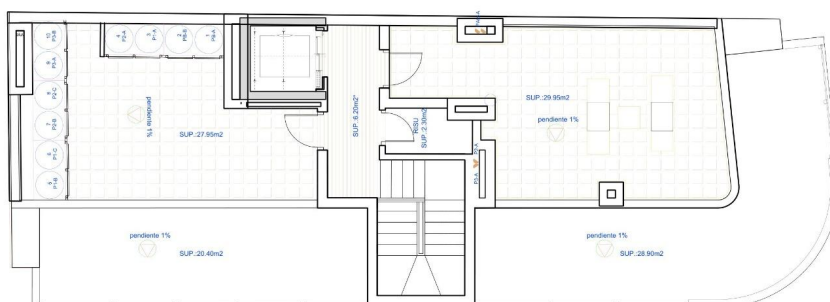


CUADRO DE SUPERFICIES SUPERFICIE VIVIENDA TIPO	
	VIV-B
SALON COMEDOR COCINA	19,00 m2
DORMITORIO-1	10,50 m2
DORMITORIO-2	0,00 m2
BAÑO-1	3,95 m2
BAÑO-2	0,00 m2
TERRAZAS AL 100%	1,80 m2
SUP. ÚTIL VIVIENDA	35,25 m2
SUP. CONSTR. VIVIENDA (INCLUIDAS TERRAZAS AL 100%)	42,70 m2
SUP. CONSTRUIDA COMUNES	10,07 m2
SUPERFICIE CONSTRUIDA TOTAL	52,77 m2



Diagrama de planta de un edificio con las siguientes áreas y pendientes:

- Área superior izquierda: SUP. 2.45m²
- Área superior central: SUP. 19.60m²
- Área superior derecha: SUP. 25.65m²
- Área central: SUP. 23.35m² (contiene una zona etiquetada como "pendiente 1%")
- Área inferior central: pendiente 30%
- Área inferior izquierda: pendiente 1%
- Área inferior derecha: pendiente 30%











"OUR EXPERIENCE IS YOUR GUARANTEE"