



REF: # 11345

ORIHUELA COSTA (PLAYA FLAMENCA)



INFO	
PRIX:	372.000 €
TYPE:	Appartement
CITY:	Orihuela Costa (Playa Flamenca)
CHAMBRES:	2
Ba ENFANTS:	1
Built (m2):	80
pas (m2):	-
Terrasse (m2):	19
A ENFANTS:	
de plante:	-
MESSAGE	-



DESCRIPTION

KEY READY !! NEW BUILD RESIDENTIAL COMPLEX APARTMENTS IN PLAYA FLAMENCA - only 600m from the beach! Beautiful apartments by the sea in a residential complex with large common areas including parks, swimming pools, gym, sauna and pedestrian paths. This 76m2 apartment consists of 2 bedrooms, 1 bathrooms and has air conditioning through ducts, underfloor heating in the bathrooms and a parking space included in the price. This Residential enjoys an exceptional situation next to Flamenca beach, shopping centres and an excellent connection with the AP-7 highway. The opportunity to live near the sea in an idyllic setting, designed to offer a sustainable and healthy lifestyle, which exudes open spaces, green areas and architectural harmony. Its design includes facades with planters, large flowerpots, stone porticoes that complete a scenic route full of native flora in which there is no lack of a lake, fountains, a swimming pool with an integrated chill out lounge area, jacuzzis, and an aquatic children's play area. A glass-enclosed gym with panoramic views over the lake, an exercise room and a Finnish sauna complete the extensive list of amenities. Playa Flamenca is a quiet beach-side residential urbanization, located 40 minutes drive from

Alicante airport and 15 minutes drive from the bustling town of Torrevieja, the complex is only 350m from the largest shopping centre in the region of Alicante! PRICE FROM 340.000 TO 366.000.-€

CERTIFICAT ÉNERGÉTIQUE



STYLE	VIEW	CLIMATISATION	DISTANCE :
<ul style="list-style-type: none"> • moderne • contemporain 	<ul style="list-style-type: none"> • Panoramico 	<ul style="list-style-type: none"> • Central 	Beach : 500 m <hr/> aéroport: 70 Km <hr/> : 5 Km
MEUBLÉ	PARKING PAS. CAR	ZONES	ÉTAGE
<ul style="list-style-type: none"> • Vide 	: 1	<ul style="list-style-type: none"> • Sauna • ou chambre Baignade • Gymnasio 	<ul style="list-style-type: none"> • tuiles • Stone
CUISINE	JARD RIVIÈRE ET TERRASSES N	CHAUFFAGE	EXTRA
<ul style="list-style-type: none"> • cuisine • cuisine équipée • granit 	<ul style="list-style-type: none"> • Terrasse couverte • clôtures • murs en pierre • hayon • Jard RIVER Communauté 	<ul style="list-style-type: none"> • chauffage électrique 	<ul style="list-style-type: none"> • intégré • Alarme • Porte de sécurité • Double vitrage • porte Videocamara • Elevator

PROPERTY GALLERY









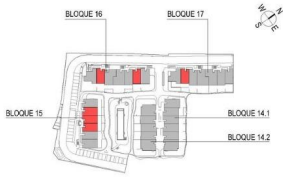






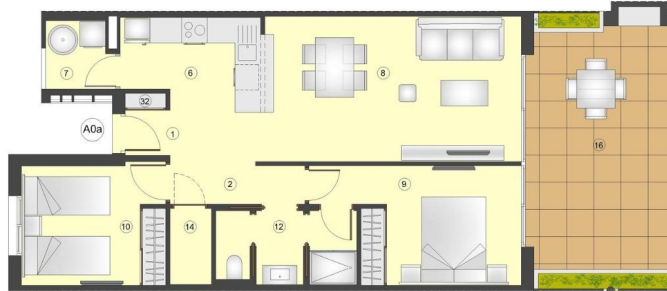


NOTA: El Porche y jardineras pueden variar en función de la ubicación de la vivienda. Ver Plano de Planta.
 NOTA: The Porch and Jardineras may vary depending on the location of the house. See top view plans.
 NOTA: Le Porche et jardinères peuvent varier en fonction de l'emplacement du logement. Voir plans d'étage.



	A0b	A0c	A0d
VARIEDAD DE TIPOS POR TERRAZAS			
TOTAL SUP. ÚTILES	64,79 m ²	64,79 m ²	64,79 m ²
SUP. CONSTRUIDA INTERIOR	75,94 m ²	75,94 m ²	75,94 m ²
14 SUP. CONSTRUIDA PORCHE	19,26 m ²	18,83 m ²	19,26 m ²
22 SUP. CONSTRUIDA TERRAZA DESCUBIERTA	2,44 m ²	2,42 m ²	2,44 m ²
TOTAL SUP. CONSTRUIDA PRIVADA	97,45 m ²	97,41 m ²	97,68 m ²

#	SUPERFICIES ÚTILES / FLOOR AREA / SURFACES UTILES	TIPO / TYPE	A0a
1	VESTIBULO / HALL / ENTREE		2,88 m ²
2	PASO 1 / CORRIDOR 1 / CIRCULATION 1		3,94 m ²
6	COCINA / KITCHEN / CUISINE		6,84 m ²
7	GALERIA / GALLERY / GALLERIE		2,48 m ²
8	SALÓN COMEDOR / LIVING-DINING ROOM / SALON-SALLE A MANGER		21,21 m ²
9	DORMITORIO 1 / BEDROOM 1 / CHAMBRE 1		11,53 m ²
10	DORMITORIO 2 / BEDROOM 2 / CHAMBRE 2		9,48 m ²
12	BANO 1 / BATHROOM 1 / SALLE DE BAINS 1		5,37 m ²
14	TRASTERO / STOREROOM / CLOSET		1,23 m ²
22	ZAFATERO / BIDE LOCKER / PLACARD / CHAUSSEURES		0,38 m ²
TOTAL SUP. ÚTILES / TOTAL FLOOR AREA / TOTAL SURFACES UTILES			64,79 m ²
SUP. CONSTRUIDA INTERIOR / BUILT INTERIOR AREA / SURFACE CONSTRUITE INTERIEUR			75,94 m ²
14 SUP. CONSTRUIDA PORCHE / BUILT PORCH AREA / SURFACE CONSTRUITE PORCHE			19,26 m ²
TOTAL SUP. CONSTRUIDA PRIVADA / TOTAL BUILT PRIVATE AREA / TOTAL SURFACE CONSTRUITE PRIVATIVE			97,48 m ²
SUP. JARDIN desde planta 1 / GARDEN AREA from the 1st FLOOR / JARDIN de -1			11,23 m ²



TIPO/TYPE **A0a**

Apartamento, 2 Dormitorios + 1 Baño - Planta Baja
 Appartement, 2 Bedrooms + 1 Bathroom - Ground Floor
 Appartement, 2 Chambres + 1 Salle de bains - Rez-de-chaussée



Plano sujeto a posibles modificaciones por razones o exigencias de índole técnica o jurídica. Las superficies son aproximadas. Cocina y amueblamiento orientados, sin valor contractual.
 Plans subject to possible modifications for technical or legal reasons. Measurements shown are approximate. Kitchen and furnishings are for display purposes only, with no contractual value.
 Plans soumis à modifications en fonction des besoins ou exigences d'ordre technique ou juridique. Les surfaces sont approximatives. Cuisine et aménagement indiqués, sans valeur contractuelle.

Enero/January/Janvier 2023





"OUR EXPERIENCE IS YOUR GUARANTEE"